

Town Hall

2-3 pm, May 16, 2024

Agenda

- Welcome
- Leadership Update
- Strategic Focus
- Stories from the Field
- ANR in the News
- New Hires
- Other Updates

Chat warmup
Learning about each other:

What are you doing over the long Memorial Day Weekend?



Linda Mar Beach, Pacifica

Leadership Update

Vision & News - (10-15 mins)



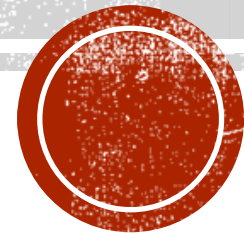
Strategic Focus

Laura Snell

DEVIL'S GARDEN COLT CHALLENGE CA MUSTANG CAMP

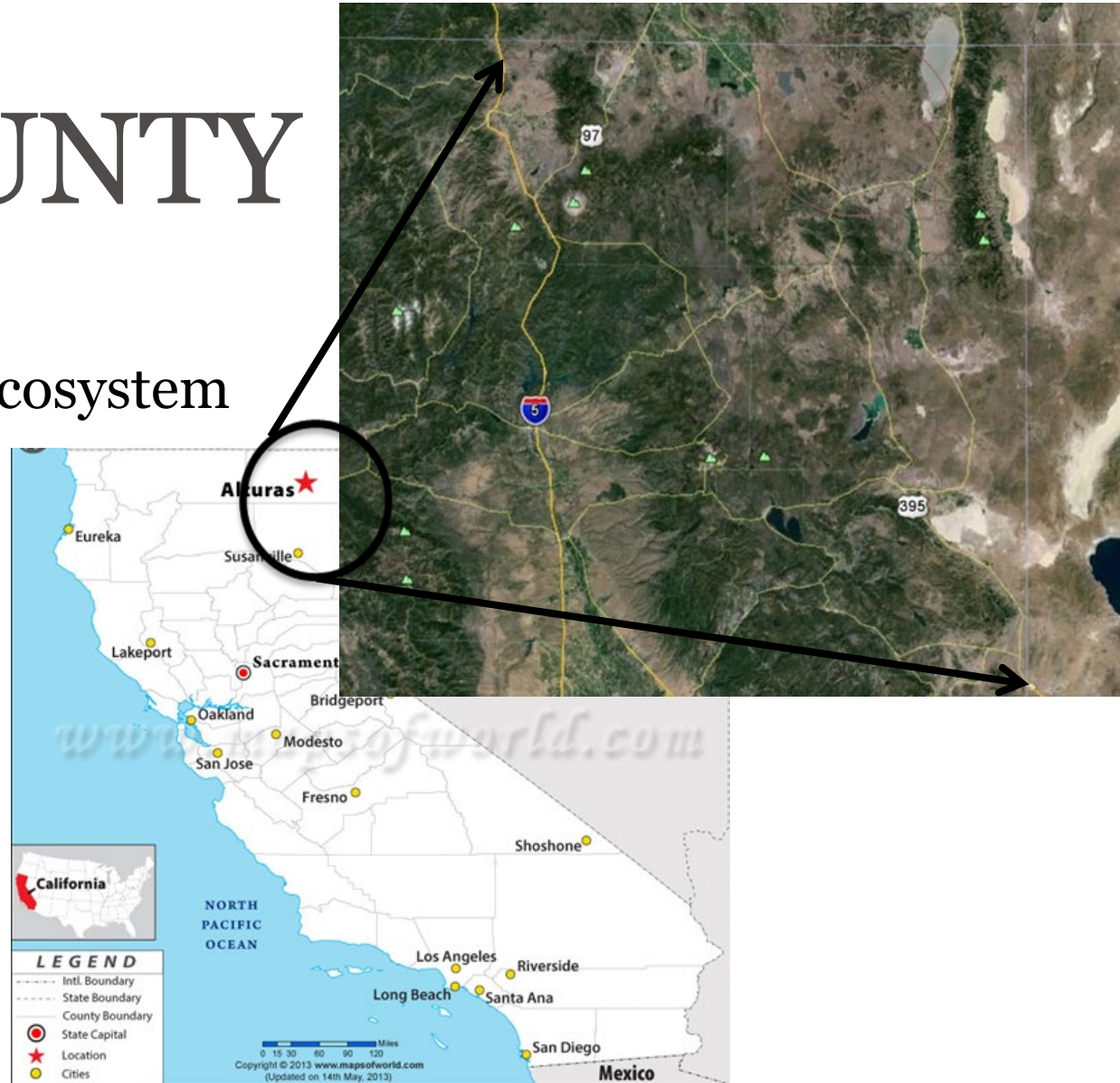
Laura K. Snell

Modoc County Director



MODOC COUNTY

- Devil's Garden Plateau
- Sage steppe and Juniper Ecosystem
- Pacific Flyway Route
- Interstate Deer Herd
- Multiple Use



RESEARCH



M 97 106°F 41°C

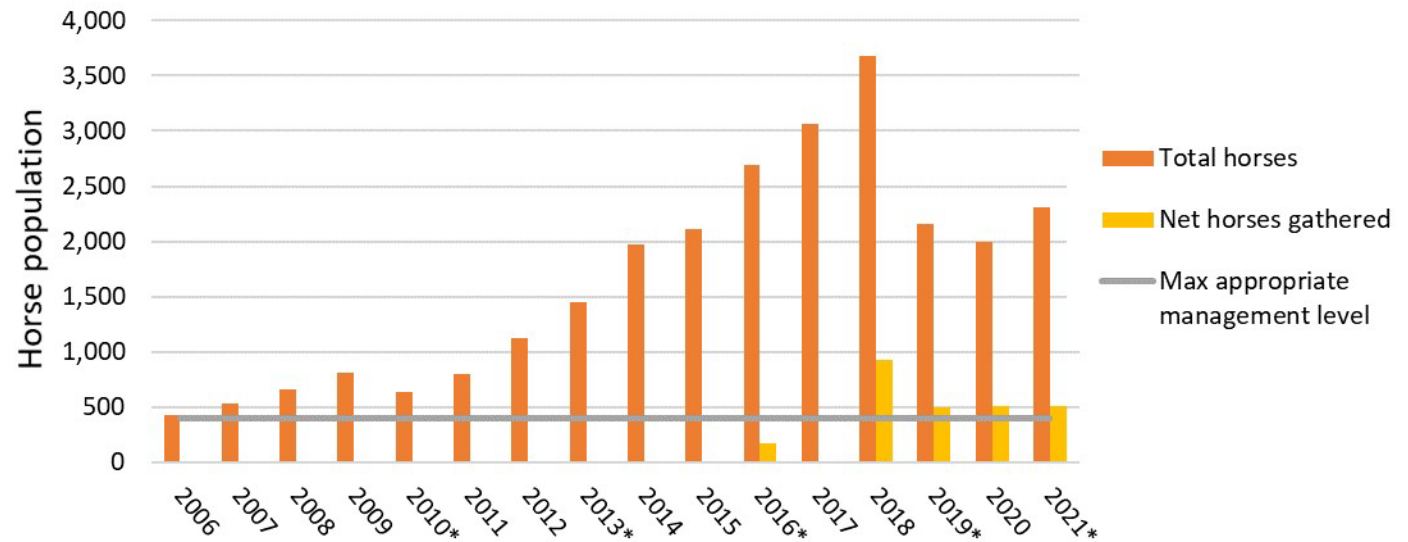


07-25-2016 18:22:53



IDENTIFY PROBLEMS

- Wild horses are over their appropriate management level in Modoc County
- There are knowledge gaps in the general public about wild horses
- Most wild horse policy is specified to the Bureau of Land Management (BLM) leaving out United States Forest Service (USFS) horses
- Decades of bureaucracy have limited wild horse placement options



IDENTIFY SOLUTIONS

- Develop partnerships with local people and agencies to educate policy makers and the general public
- Change federal policies
 - Reduce bureaucracy to placement of wild horses
- Create a youth training program for wild horses
- Develop a mustang camp and 4-H curriculum for more education



DON'T REINVENT THE WHEEL

USE WHAT'S ALREADY OUT THERE

- 4-H is a great youth development program (and so is FFA)
 - Safety, processes, insurance etc.
- Junior Livestock Show
 - Staple in Modoc County for 80 years
- Horse Show and Mustang Makeover Models
 - There are horse shows everywhere!
 - Look at what other people are doing and don't repeat their mistakes
- Simple is Better
- Use Local Volunteers



2020-2024 COLT CHALLENGE SUCCESS

- 156 youth from 34 Counties
- Used our existing Junior Livestock Show Week
- For each horse in the program, an additional 1.5 horses went to friends or family members
- Broader 4-H impacts
 - Keeping older youth in 4-H
 - Career skills and training horses
 - Several new 4-Hers joined to participate
 - Expanding to southern Oregon

<https://www.devilsgardenucce.org/post/colt-challenge-faq>



2024 MUSTANG CAMP

- Started by Utah State University Colleagues
- Opportunity for youth interested in learning about wild horses
- Bureau of Land Management Grant to fund Mustang Camps, Curriculum Development, etc

<https://extension.usu.edu/utah4h/events/mustang-camp>



The graphic is a promotional poster for the 2024 Mustang Camp. It features a central image of a herd of wild horses in a field. Above the image is a logo with a mountain silhouette and the text 'MUSTANG CAMP' and 'HEALTHY LANDS AND HEALTHY HORSES'. To the right, a green banner says 'JOIN US AT Mustang Camp!' and 'LASSEN COUNTY CALIFORNIA'. Below the image, text describes the camp as an overnight opportunity for youth to learn about public lands, wild horses, and burros. A QR code is provided for more information, with the text 'FOR MORE INFORMATION PLEASE VISIT' around it. At the bottom, a green banner says 'REGISTRATION IS OPEN!' and 'SCAN QR CODE FOR LINK'. A date stamp 'June 28-29 2024' is in the bottom left. At the bottom right, logos for the Bureau of Land Management, 4-H, Utah State University, and UCCE are shown.

MUSTANG CAMP
HEALTHY LANDS AND HEALTHY HORSES

JOIN US AT Mustang Camp!
LASSEN COUNTY CALIFORNIA

THIS OVERNIGHT CAMP IS AN OPPORTUNITY FOR YOUTH ACROSS THE WEST TO LEARN ABOUT MANAGING PUBLIC LANDS, RANGELANDS, WILD HORSES, AND BURROS, LOOKING DEEPER AT THE RELATIONSHIP BETWEEN HEALTHY LANDS AND HEALTHY HORSES!

REGISTRATION IS OPEN!
SCAN QR CODE FOR LINK

June 28-29 2024

REGISTRATION CLOSES JUNE 14TH
25 SPOTS AVAILABLE

FOR MORE INFORMATION PLEASE VISIT

USU MUSTANG CAMP WEBPAGE

Wild Horse & Burro
U.S. Department of the Interior
Bureau of Land Management

4-H

STATE

UC CE



2024 MUSTANG CAMP

- Train the trainer opportunity
- For educators of all types looking to host a camp or looking to gain access to curriculum
- Curriculum “in a bag” program
- 4-H horse leaders, FFA Teachers, Cooperative Extension, CES...

HEALTHY LANDS AND HEALTHY HORSES

Come and join us for a training session presented by Utah State University and UC Cooperative Extension Educators about Mustang Camp - educating youth about the balance of healthy lands and healthy horses. We are excited to help you continue to educate youth about wild horses and burros.

EVENT HIGHLIGHTS

- Training for educators and professionals.
- Learn to facilitate Mustang Camps and education opportunities in your area
- Take away educational resources and curriculum
- Meet educators, professionals, and leaders wanting to learn more about wild horses and burros, and their management.
- Professional Development Opportunity

June 27th, 2024

10:00 AM – 3:00 PM

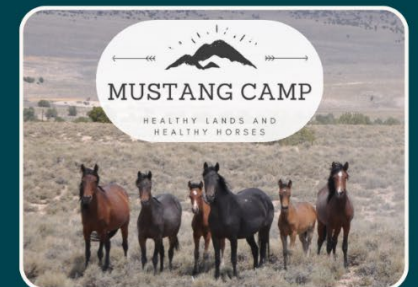
LUNCH WILL BE PROVIDED

Lassen County Fairgrounds
195 Russell Ave.
Susanville, CA 96130

USU MUSTANG
CAMP WEBPAGE



PLEASE RSVP TO
LAURA SNELL
LKSNEILL@UCANR.EDU



PROGRESS

- 2024 Reality – Population about 1000
 - Managing horses and the ecosystem
 - Positive effects on 4-H enrollment
 - Positive policy changes
- Future
 - Expand the program
 - Continue to educate
 - Continue management

<https://www.facebook.com/devilsgardenresearchandeducation>



THANK YOU!

Laura Snell

lksnell@ucanr.edu

530-233-6400



DEVIL'S GARDEN Colt Challenge



CELEBRATE OUR 5TH ANNIVERSARY WITH US!

The 2024 DG Colt Challenge competition will be held June 22nd in Alturas, CA at the Junior Livestock Showgrounds on the corner of 8th and Nagle. We will start with registration at noon and classes will start at 1pm.

Overnight accommodations can be made for horses at the showgrounds with prior reservation. There is also dry camping available at the showgrounds. These are both first come first serve. Call our office, 530-233-6400 for overnight pens before the show. The Rim Rock Motel also has horse pens available for guests.

There will be three classes like years past, obstacle, halter, and showmanship. For returning horses who are over three, there will be an option for equitation on horseback and to complete the obstacle course on horseback. Register to participate <https://surveys.ucanr.edu/survey.cfm?surveynumber=42920>. All Colt Challenge youth and horses from the past five years are welcome!

Questions? Check out the FAQ page at <https://www.devilsgardenucce.org/post/colt-challenge-faq>

SPECTATORS WELCOME!

**COMPETITION STARTS
AT 1PM
OVER \$3500 IN PRIZES**

**A HUGE THANKS TO OUR
SPONSORS AND JUDGES!**

Stories from the Field

Eric Middleton

A top-down view of a nursery or grower's area filled with numerous small, black plastic pots. Each pot contains a young agave plant, likely an Agave attenuata, characterized by its rosette of thick, pointed, blue-green leaves with reddish-brown tips. The plants are arranged in a grid-like pattern. A semi-transparent green banner with white text is centered over the middle of the image.

Agave Mites

Eric Middleton
Area IPM Advisor
San Diego, Orange, LA

Agave Mites (*Oziella* sp.)



Agave Mites (*Oziella* sp.)

Called "Grease mites"



Agave Mites (*Oziella* sp.)

Called “Grease mites”

1/3 mm, translucent whitish color



Agave Mites (*Oziella* sp.)

Called “Grease mites”

1/3 mm, translucent whitish color



Agave Mites (*Oziella* sp.)

Called “Grease mites”

1/3 mm, translucent whitish color



Agave Mites (*Oziella* sp.)

Called “Grease mites”

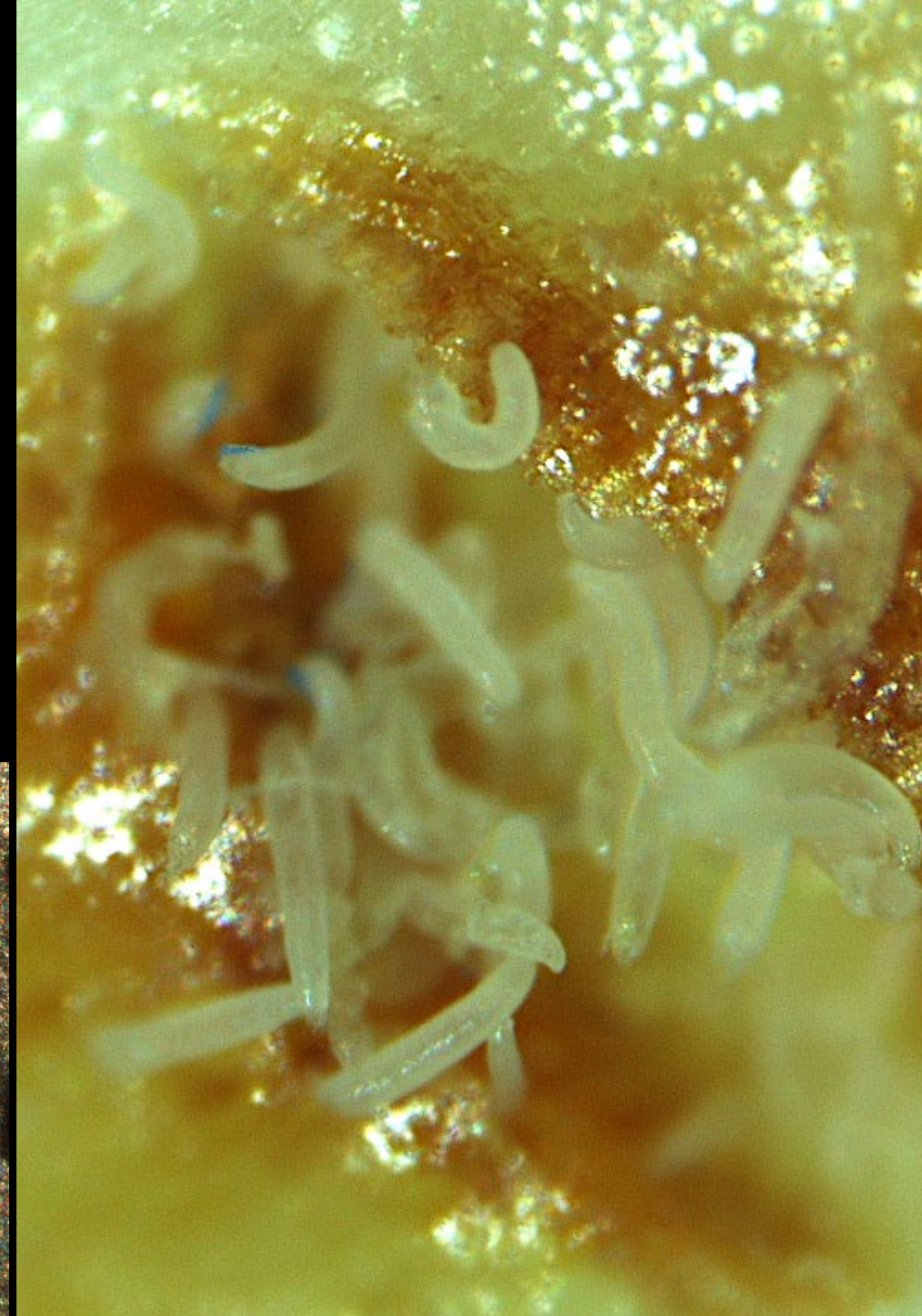
1/3 mm, translucent whitish color



Agave Mites (*Oziella* sp.)

Called “Grease mites”

1/3 mm, translucent whitish color



Agave Mites (*Oziella* sp.)

Called “Grease mites”

1/3 mm, translucent whitish color

Live in and feed on agave

Hidden on host plants



Agave Mites (*Oziella* sp.)

Called “Grease mites”

1/3 mm, translucent whitish color

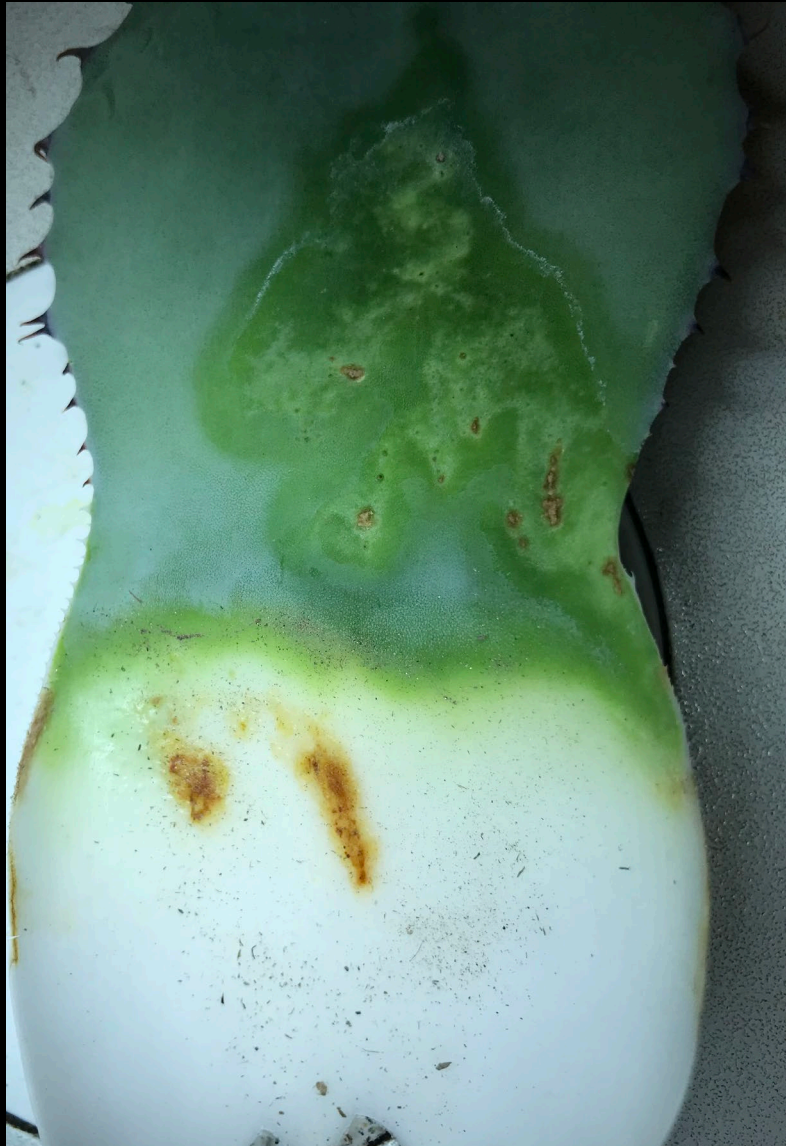
Live in and feed on agave

Hidden on host plants

Found in core, at base of inner leaves



Agave Mites: Damage



Agave Mites: Damage

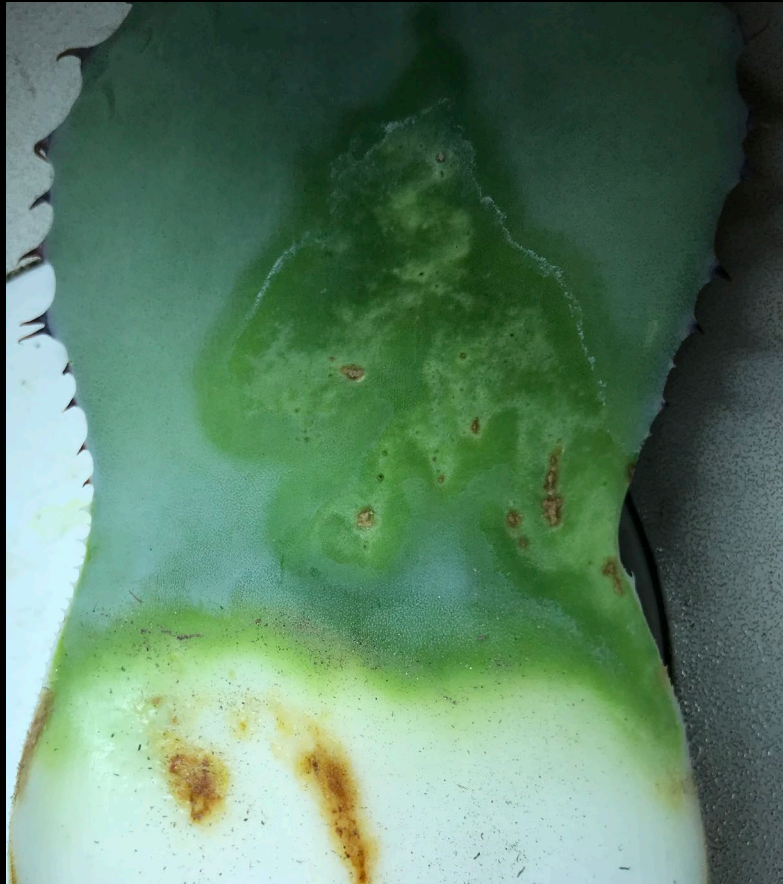


Greasy streaks
Become lesions

Agave Mites: Damage



Agave Mites: Damage



Greasy streaks
Become lesions



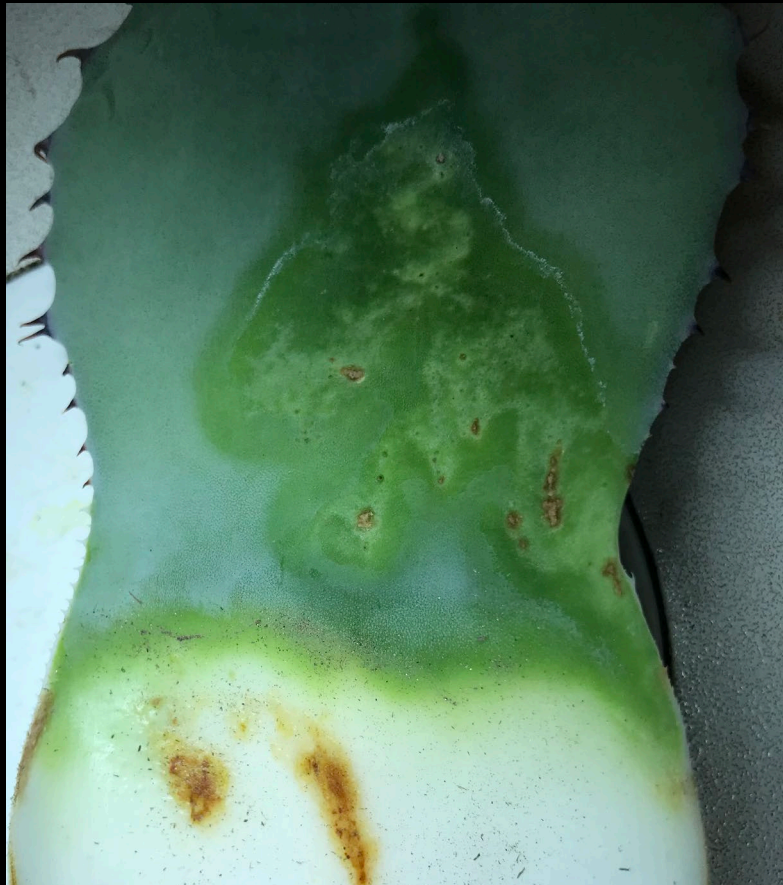
Collapsing core



Yellowing leaves

Agave Mites: Damage

Rarely fatal, but slows growth, harms appearance



Greasy streaks
Become lesions



Collapsing core



Yellowing leaves

Agave Mites: Damage

Big problem
for ornamental
agave

Rarely fatal, but slows
growth, harms
appearance

Greasy streaks
Become lesions

Collapsing core

Yellowing leaves



Agave Mite Project



Agave Mite Project

Basic info

Almost nothing known about these mites



Agave Mite Project

Basic info

Almost nothing known about these mites
When do symptoms appear?
How to work with the mites?
How to quantify?



Agave Mite Project

Basic info

Almost nothing known about these mites
When do symptoms appear?
How to work with the mites?
How to quantify?



Management



Agave Mite Project

Basic info

Almost nothing known about these mites
When do symptoms appear?
How to work with the mites?
How to quantify?



Management

What works to prevent mites?
How can you cure existing infestations?



Agave Mite Project

Basic info

Almost nothing known about these mites
When do symptoms appear?
How to work with the mites?
How to quantify?



Management

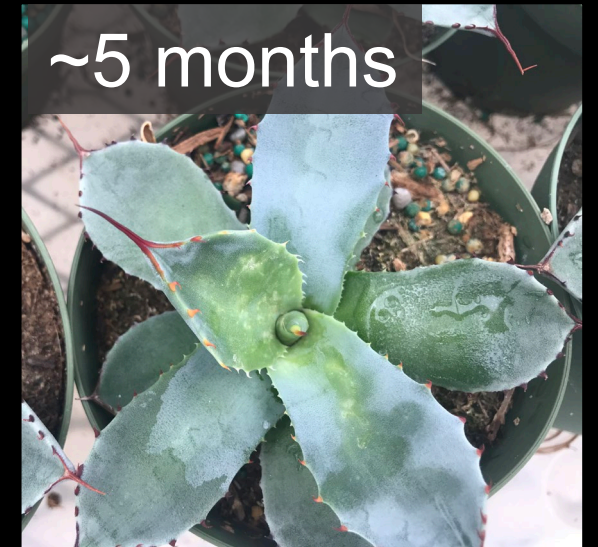
What works to prevent mites?
How can you cure existing infestations?



Symptoms and Spread

Symptoms and Spread

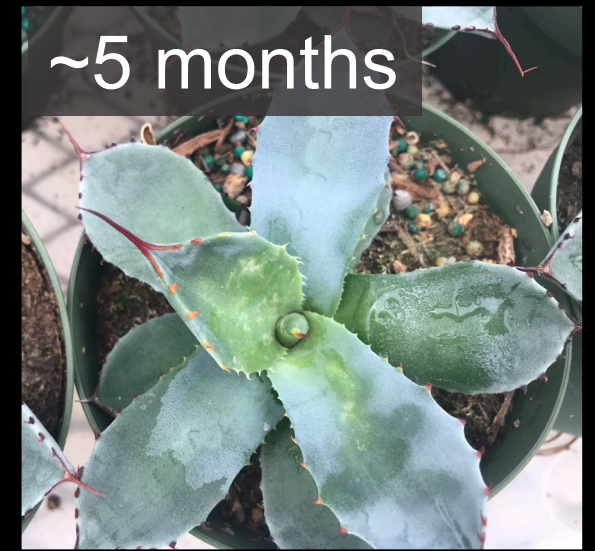
Takes ~3-5 months after infestation
for symptoms to show up



Symptoms and Spread

Takes ~3-5 months after infestation
for symptoms to show up

Mites are present for a long time
before you see damage



Symptoms and Spread

Takes ~3-5 months after infestation
for symptoms to show up

Mites are present for a long time
before you see damage



Symptoms and Spread

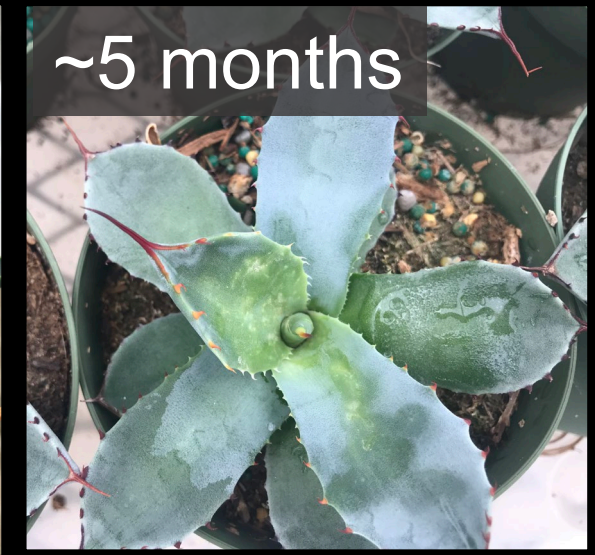
Takes ~3-5 months after infestation
for symptoms to show up

Mites are present for a long time
before you see damage

Mite spread is unpredictable

Mites travel on wind

Can show up in unexpected places



Symptoms and Spread

Takes ~3-5 months after infestation
for symptoms to show up

Mites are present for a long time
before you see damage

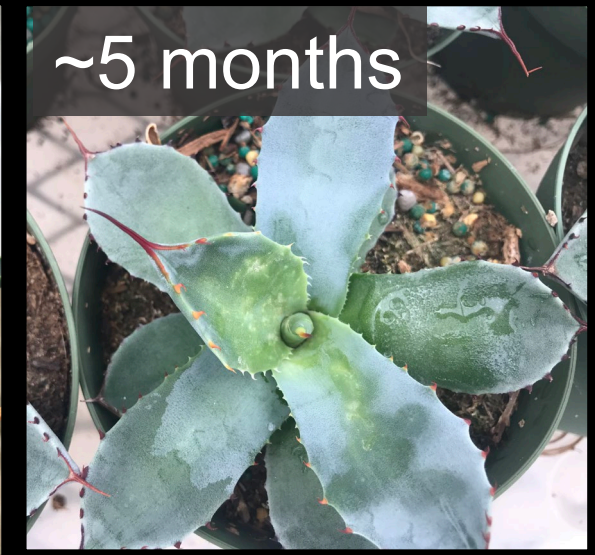
Mite spread is unpredictable

Mites travel on wind

Can show up in unexpected places

Plants close to infected plants more likely to get mites

But not always!



Symptoms and Spread

Takes ~3-5 months after infestation for symptoms to show up

Mites are present for a long time before you see damage

Mite spread is unpredictable

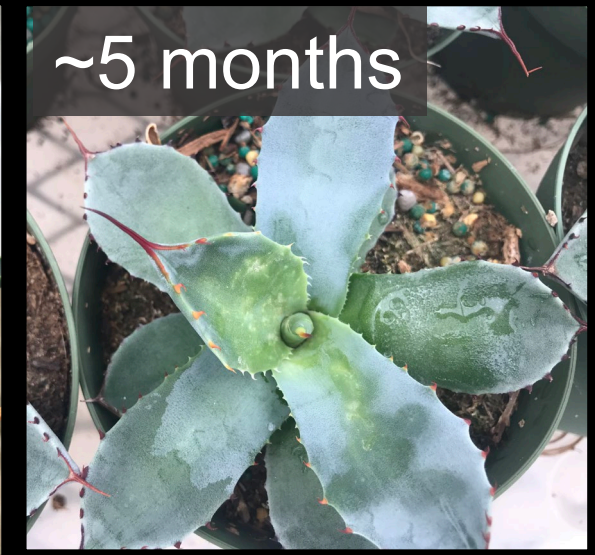
Mites travel on wind

Can show up in unexpected places

Plants close to infected plants more likely to get mites

But not always!

To be certain, must kill and cut up plants to find mites



Symptoms and Spread

Takes ~3-5 months after infestation for symptoms to show up

Mites are present for a long time before you see damage

Mite spread is unpredictable

Mites travel on wind

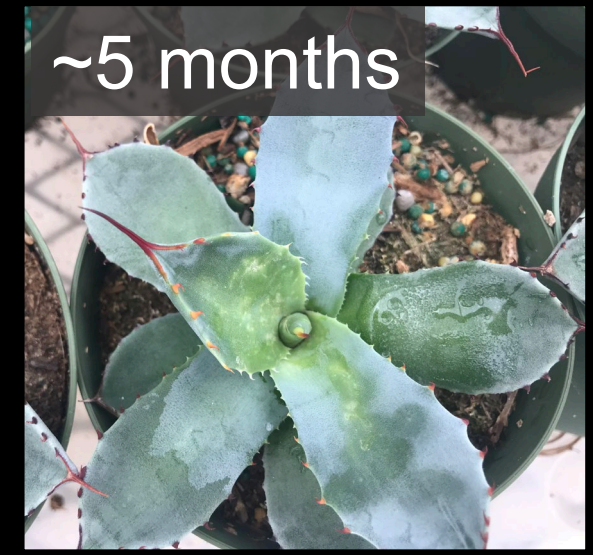
Can show up in unexpected places

Plants close to infected plants more likely to get mites

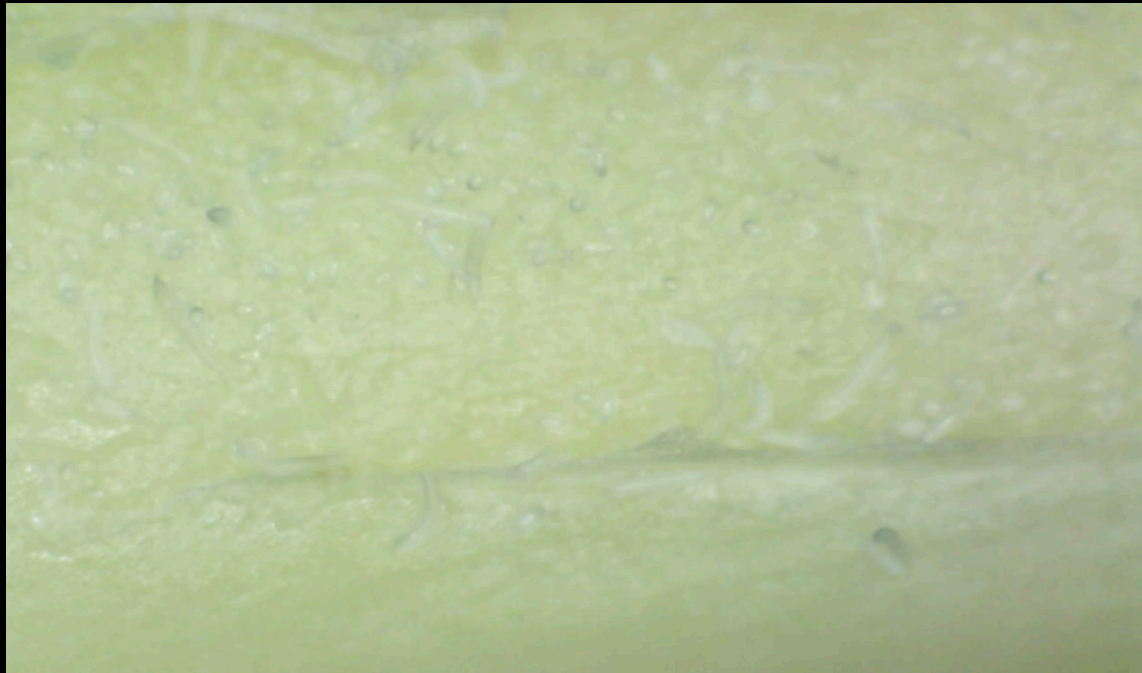
But not always!

To be certain, must kill and cut up plants to find mites

Agave mites are tricky and sneaky



Finding Agave Mites: UV Light



Finding Agave Mites: UV Light

Mites are hard to see even under magnification



Normal light

Finding Agave Mites: UV Light

Mites are hard to see even under magnification

Translucent and tiny: Have to angle leaves just so to see them



Normal light

Finding Agave Mites: UV Light

Mites are hard to see even under magnification

Translucent and tiny: Have to angle leaves just so to see them

Agave mites and eggs fluoresce weakly under UV light



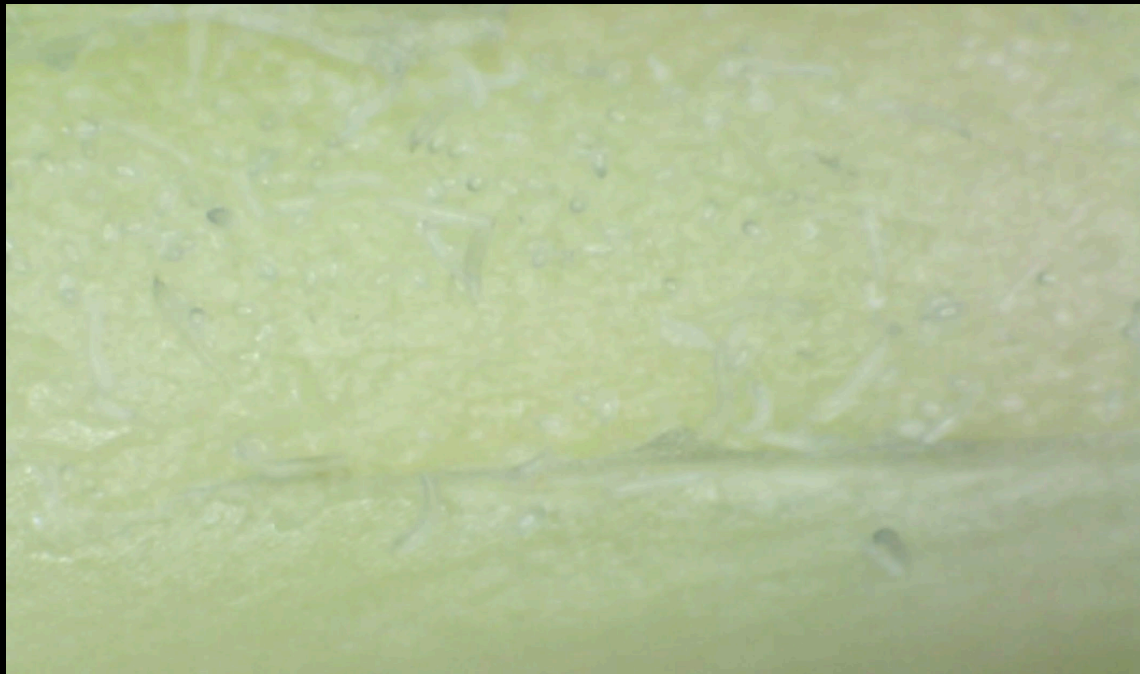
Normal light

Finding Agave Mites: UV Light

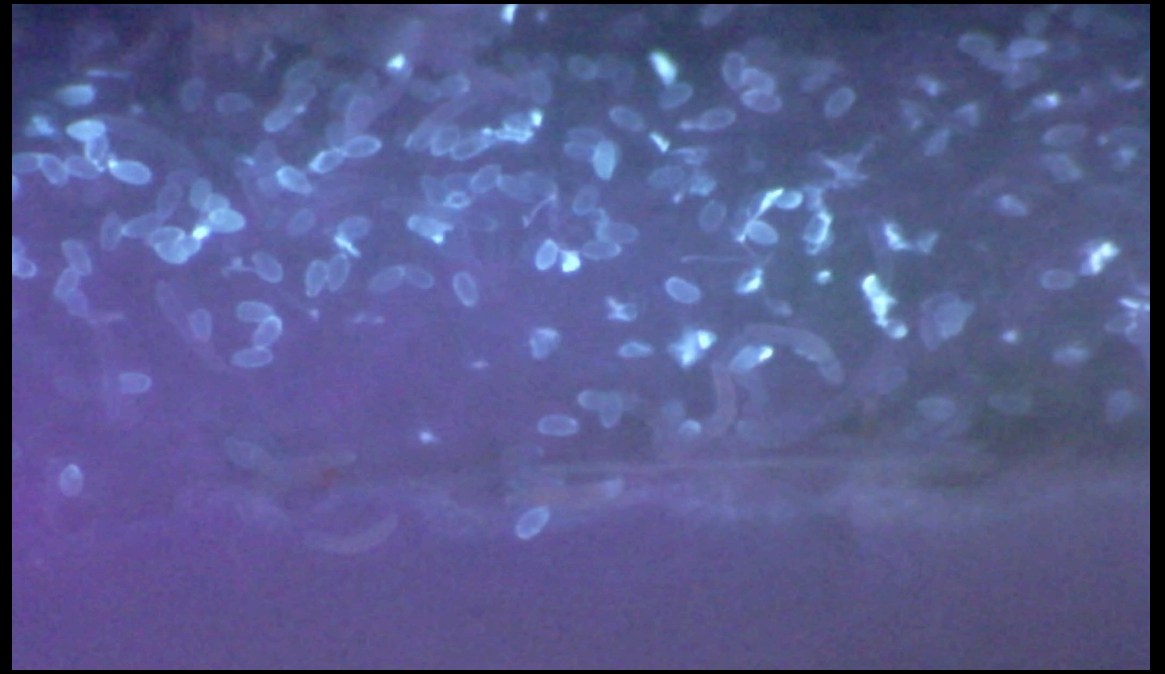
Mites are hard to see even under magnification

Translucent and tiny: Have to angle leaves just so to see them

Agave mites and eggs fluoresce weekly under UV light



Normal light



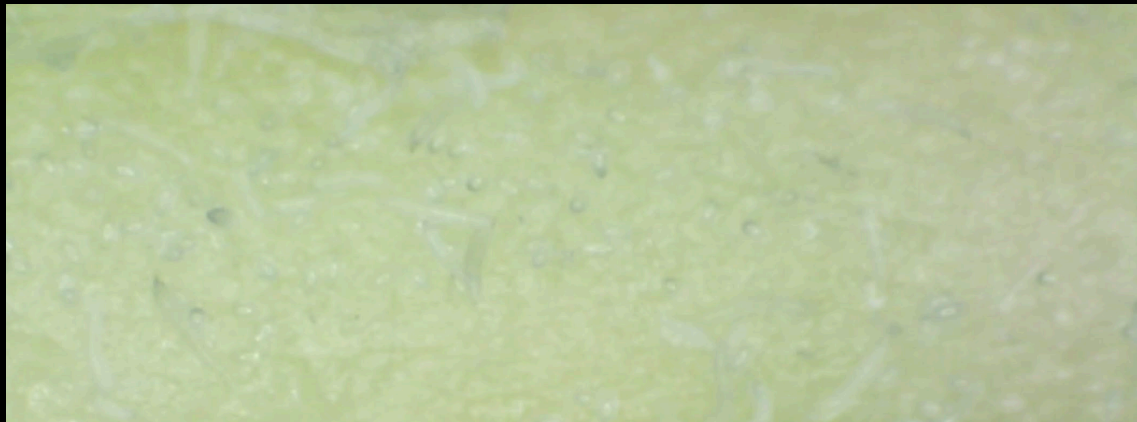
UV light

Finding Agave Mites: UV Light

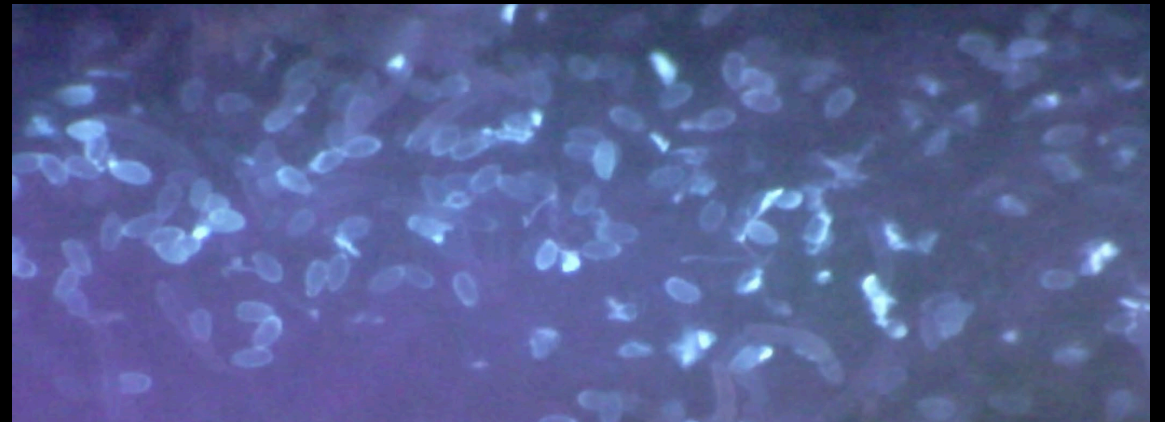
Mites are hard to see even under magnification

Translucent and tiny: Have to angle leaves just so to see them

Agave mites and eggs fluoresce weakly under UV light



Use powerful UV flashlight with filter (365 nm). Only illuminates things that fluoresce.



Normal light

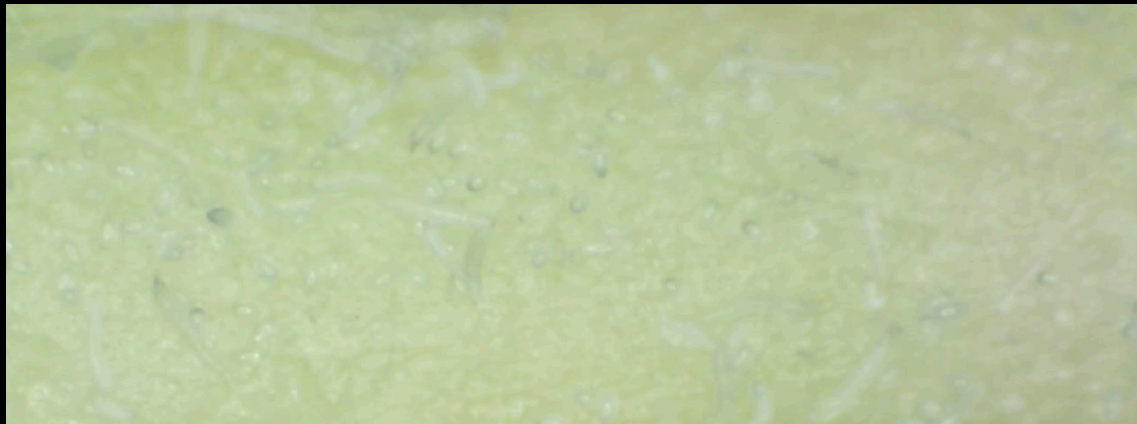
UV light

Finding Agave Mites: UV Light

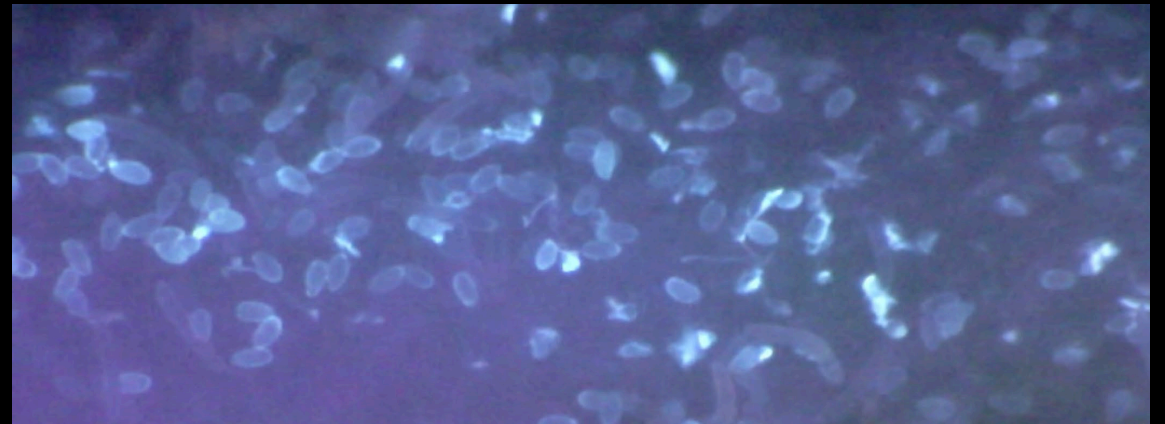
Mites are hard to see even under magnification

Translucent and tiny: Have to angle leaves just so to see them

Agave mites and eggs fluoresce weakly under UV light



Use powerful UV flashlight with filter (365 nm). Only illuminates things that fluoresce. **Note: finding mites will still take effort/time**



Normal light

UV light

Finding Agave Mites: UV Light



Finding Agave Mites: UV Light

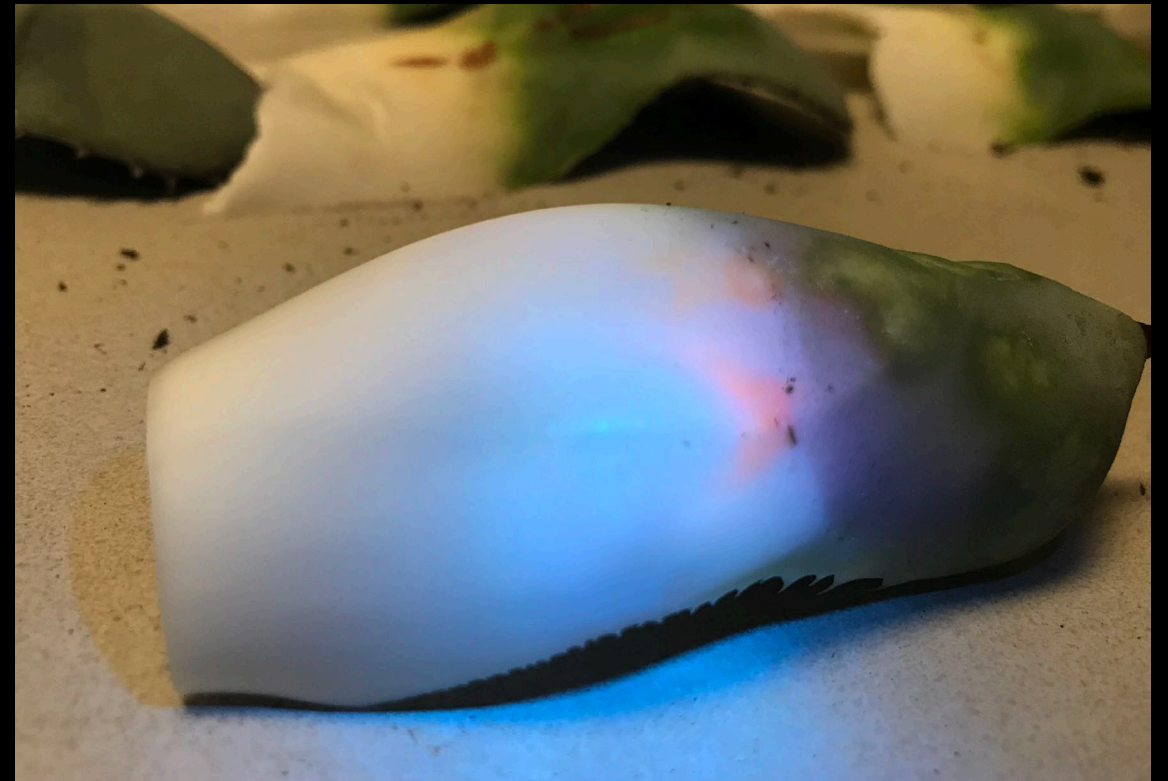
Heavy feeding damage also fluoresces



Finding Agave Mites: UV Light

Heavy feeding damage also fluoresces

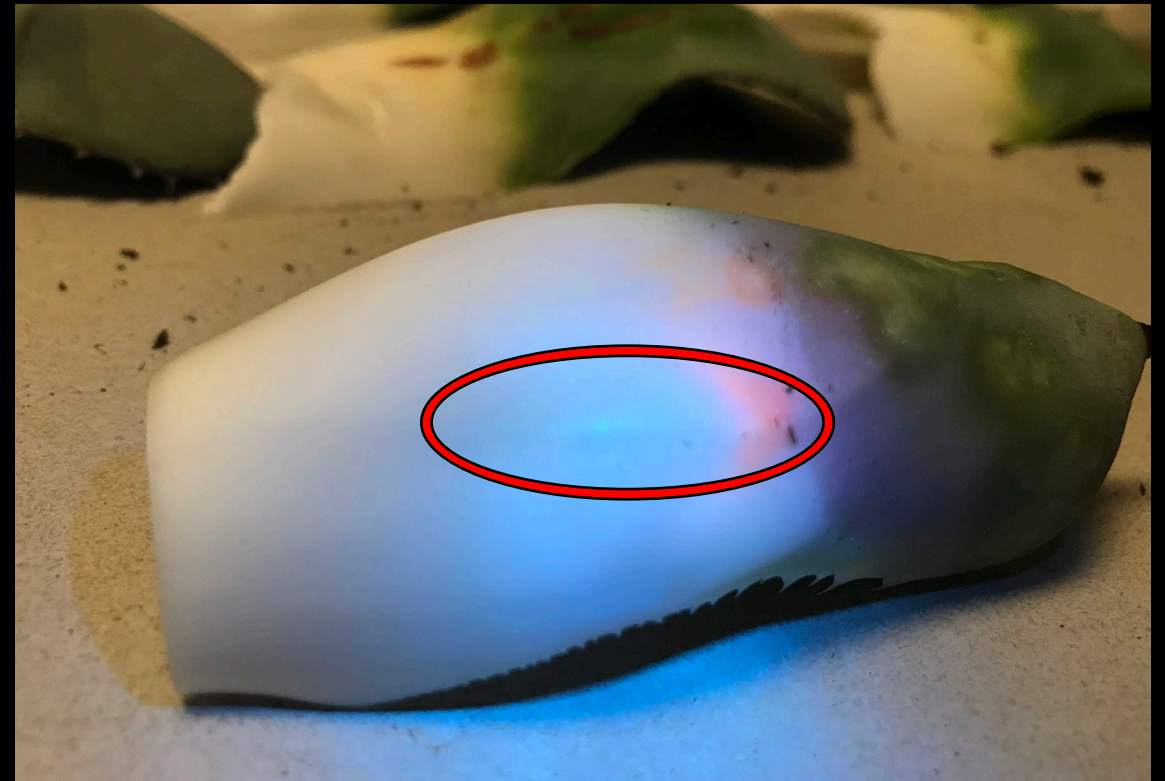
Lesions can be seen with naked eye when using UV light



Finding Agave Mites: UV Light

Heavy feeding damage also fluoresces

Lesions can be seen with naked eye when using UV light

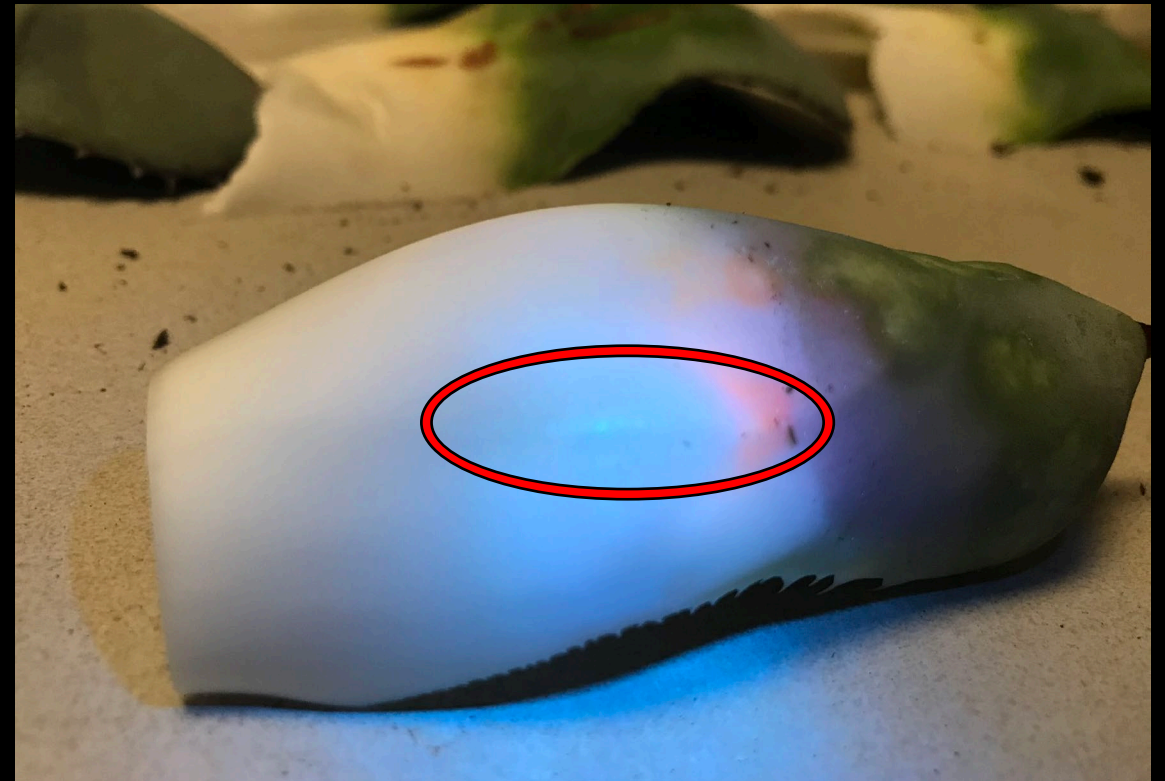


Finding Agave Mites: UV Light

Heavy feeding damage also fluoresces

Lesions can be seen with naked eye when using UV light

Subtle, but usually correlate with high mite/egg populations (50+)



Finding Agave Mites: UV Light

Heavy feeding damage also fluoresces

Lesions can be seen with naked eye when using UV light

Subtle, but usually correlate with high mite/egg populations (50+)



Finding Agave Mites: UV Light

Heavy feeding damage also fluoresces

Lesions can be seen with naked eye when using UV light

Subtle, but usually correlate with high mite/egg populations (50+)



Finding Agave Mites: UV Light

Heavy feeding damage also fluoresces

Lesions can be seen with naked eye when using UV light

Subtle, but usually correlate with high mite/egg populations (50+)



UV light is great tool for researchers, maybe scouts

Agave Mite Project

Basic info

Almost nothing known about these mites
When do symptoms appear?
How to work with the mites?
How to quantify?



Management

What works to prevent mites?
How can you cure existing infestations?



Agave Mite Project

Basic info

Almost nothing known about these mites
When do symptoms appear?
How to work with the mites?
How to quantify?



Management

What works to prevent mites?
How can you cure existing infestations?



Predatory Mite Experiment



Predatory Mite Experiment

Tested commercially available predator mites

Amblyseius andersoni, *N. californicus*, *A. swirskii*



Predatory Mite Experiment

Tested commercially available predator mites

Amblyseius andersoni, *N. californicus*, *A. swirskii*

All eat agave mites



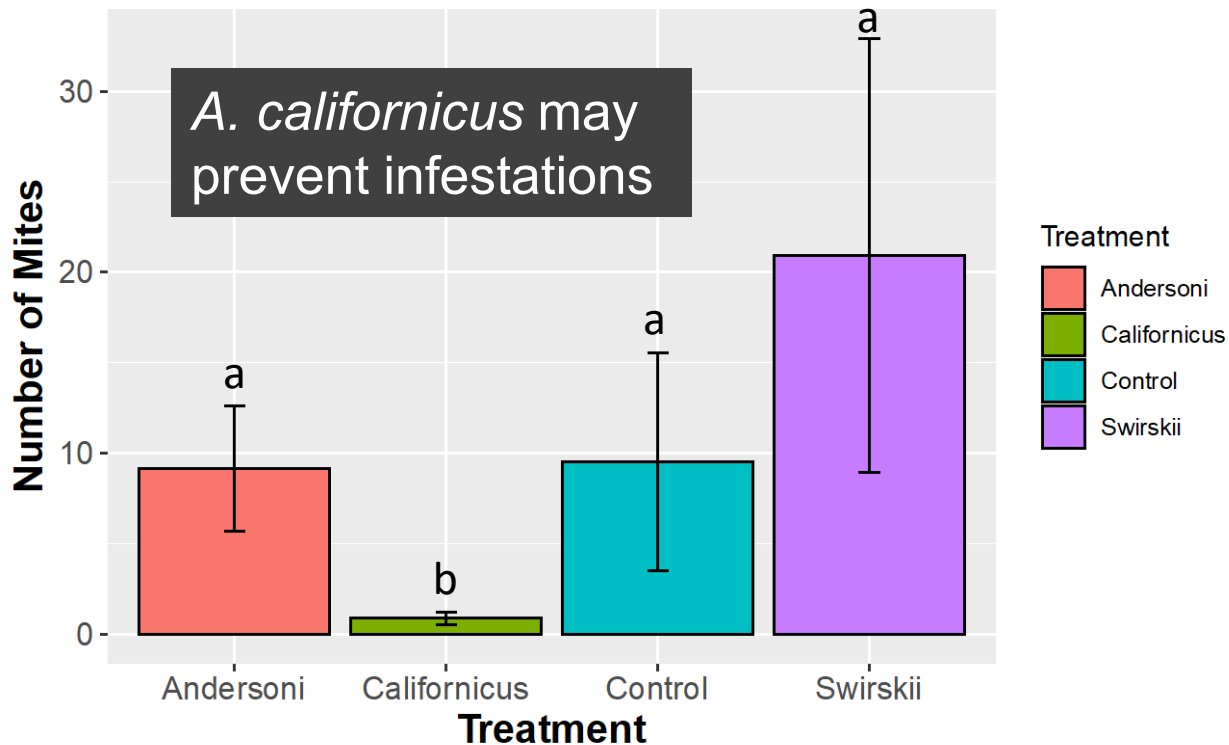
Predatory Mite Experiment

Tested commercially available predator mites

Amblyseius andersoni, *N. californicus*, *A. swirskii*

All eat agave mites

Agave Mite Abundance (Preventative)



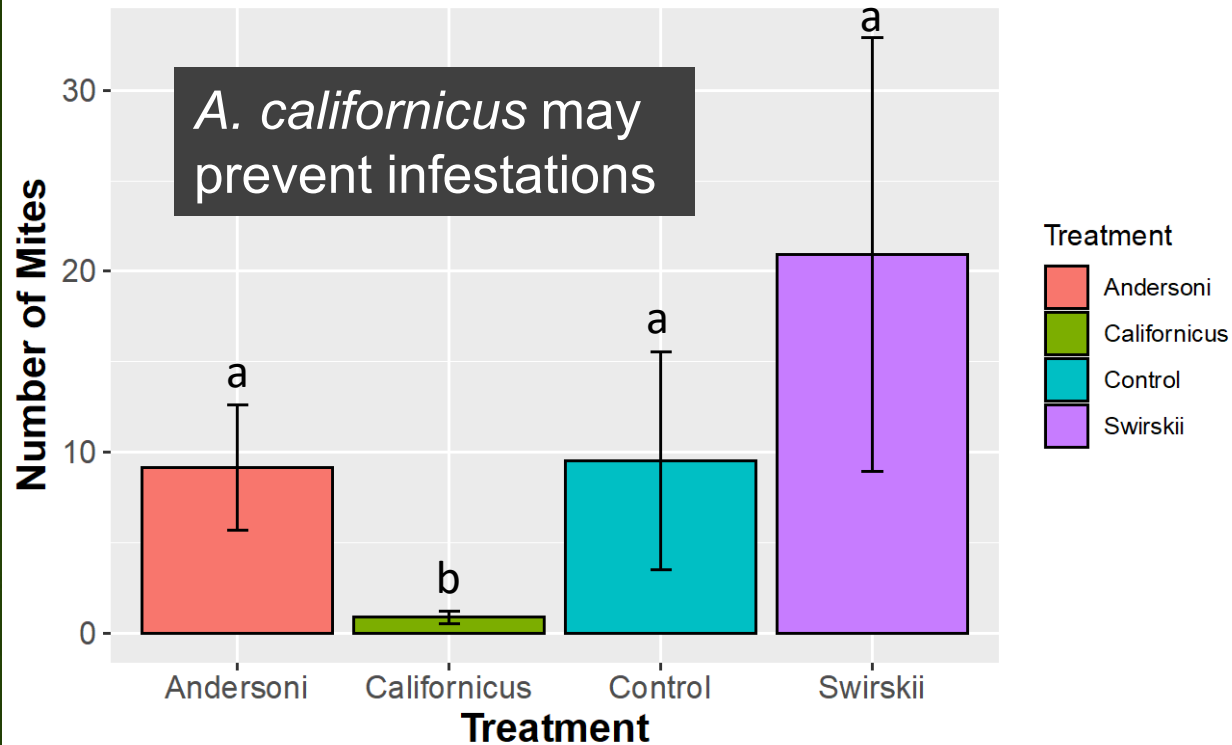
Predatory Mite Experiment

Tested commercially available predator mites

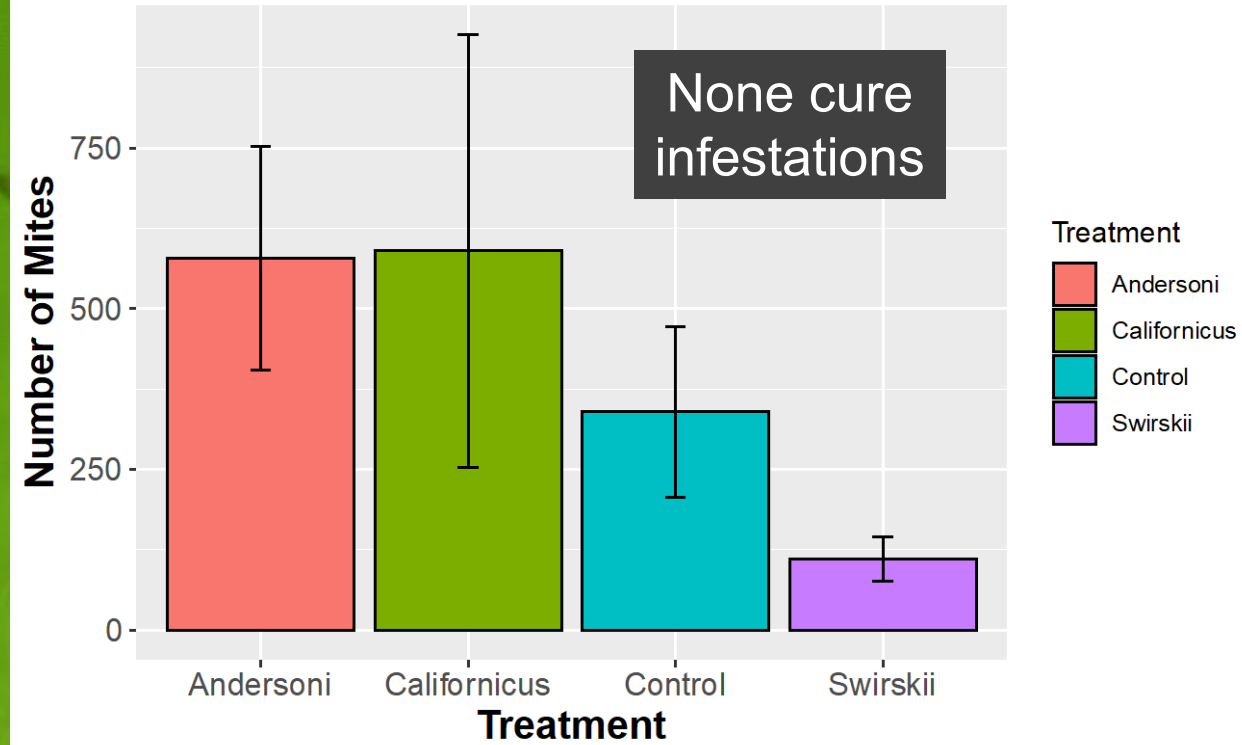
Amblyseius andersoni, *N. californicus*, *A. swirskii*

All eat agave mites

Agave Mite Abundance (Preventative)



Agave Mite Abundance (Curative)



Miticide Trials



Miticide Trials

Testing many miticides, focus on ones that killed aloe mite



Miticide Trials

Testing many miticides, focus on ones that killed aloe mite

Abamectin, spirotetramat, spiromesifen, fenpyroximate

Avid, Kontos, Savate, Akari



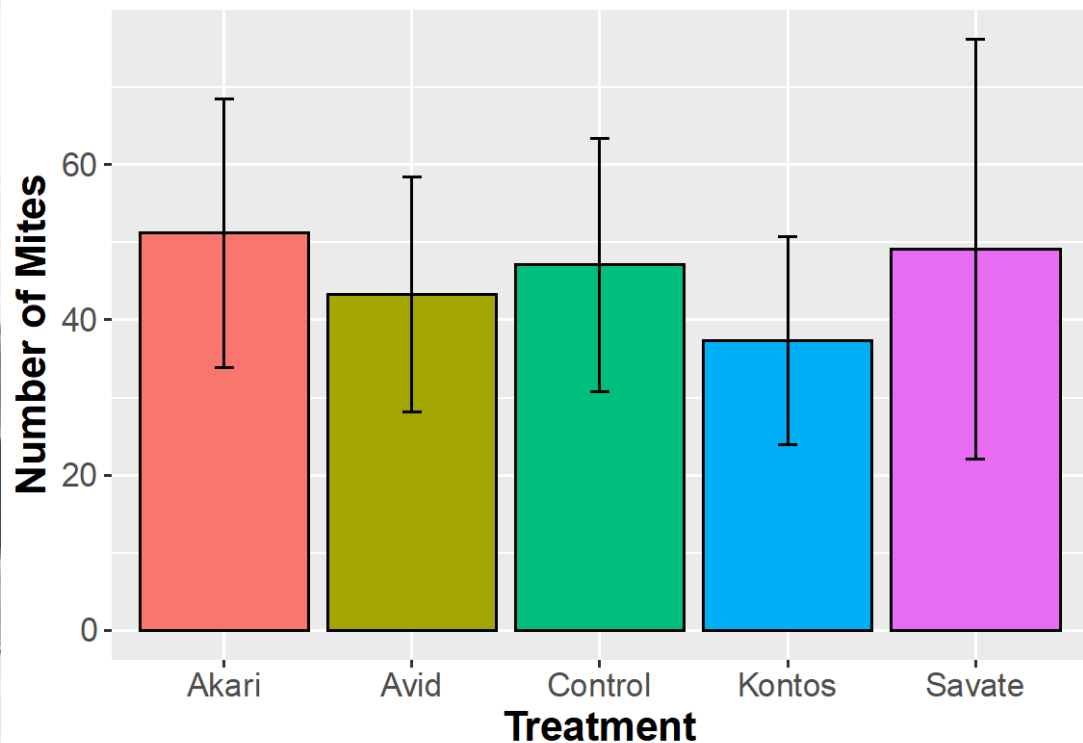
Miticide Trials

Testing many miticides, focus on ones that killed aloe mite

Abamectin, spirotetramat, spiromesifen, fenpyroximate

Avid, Kontos, Savate, Akari

Agave Mite Abundance



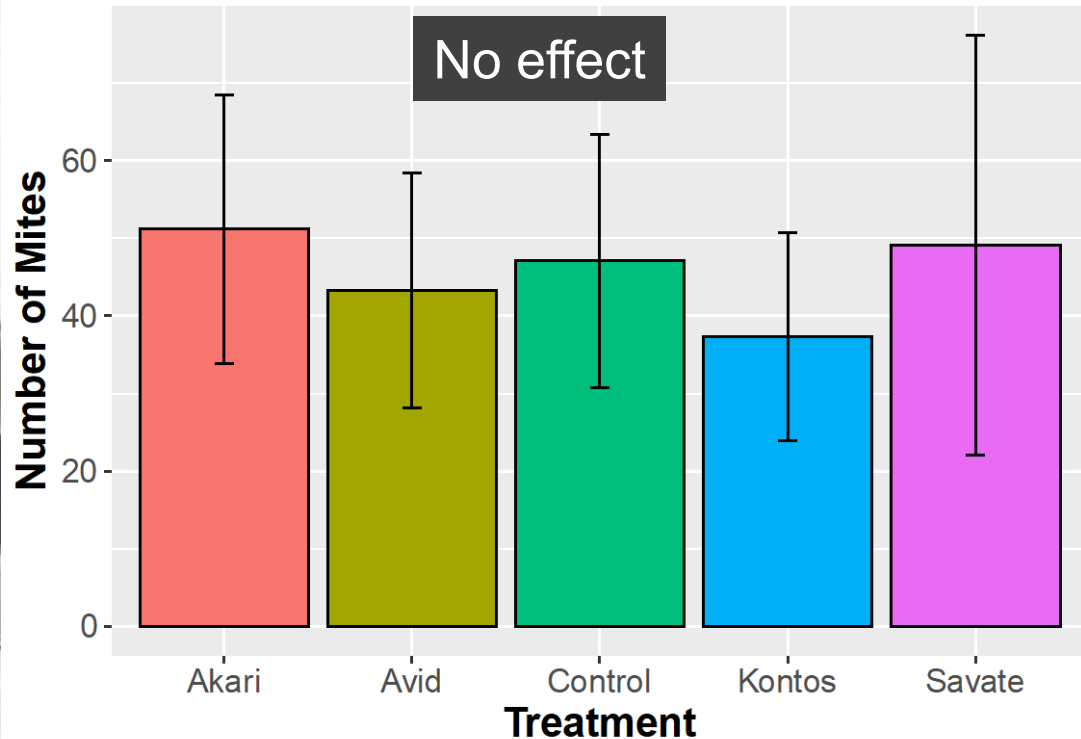
Miticide Trials

Testing many miticides, focus on ones that killed aloe mite

Abamectin, spirotetramat, spiromesifen, fenpyroximate

Avid, Kontos, Savate, Akari

Agave Mite Abundance



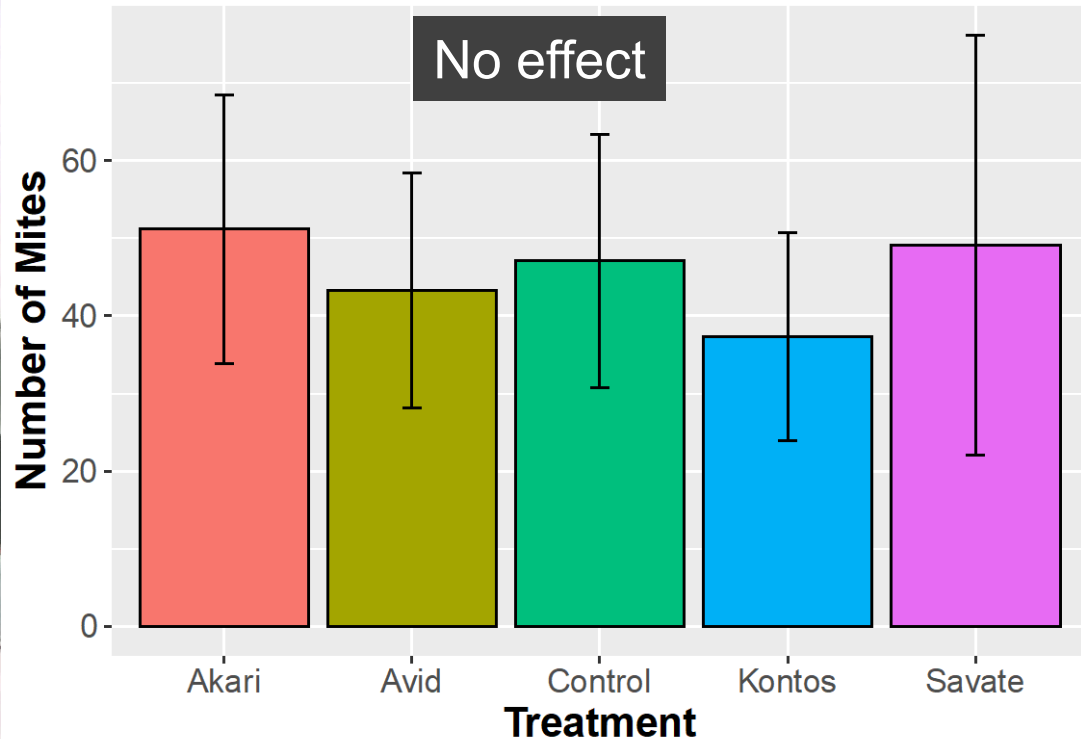
Miticide Trials

Testing many miticides, focus on ones that killed aloe mite

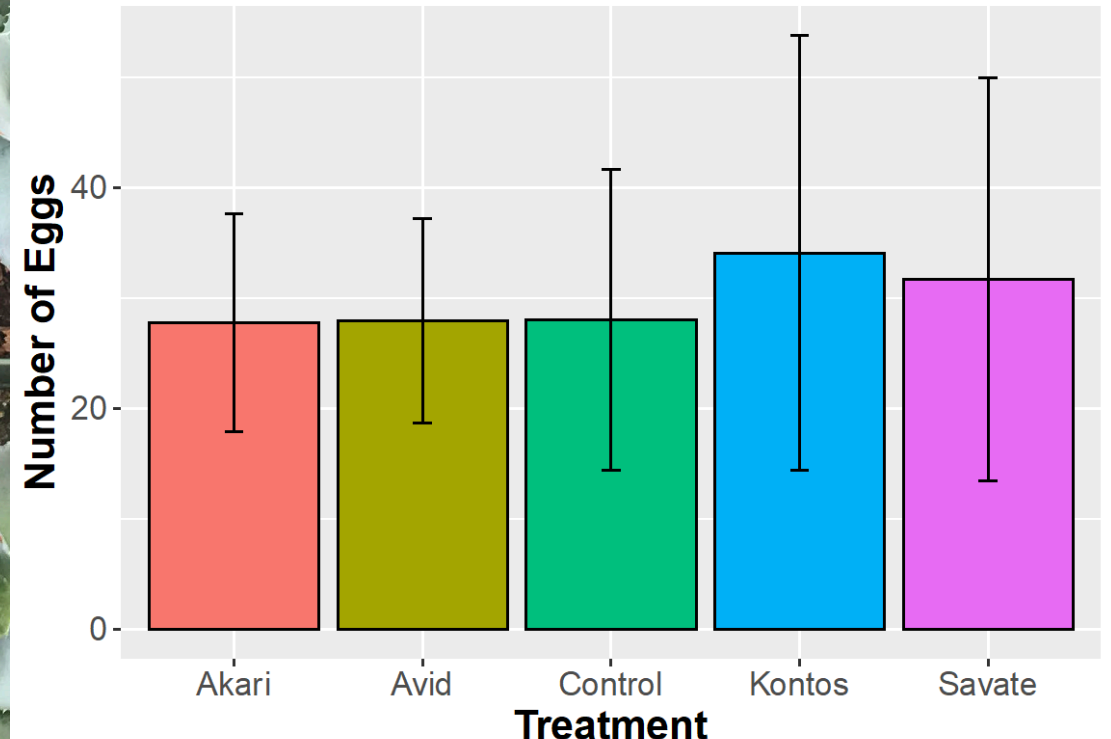
Abamectin, spirotetramat, spiromesifen, fenpyroximate

Avid, Kontos, Savate, Akari

Agave Mite Abundance



Agave Mite Egg Abundance



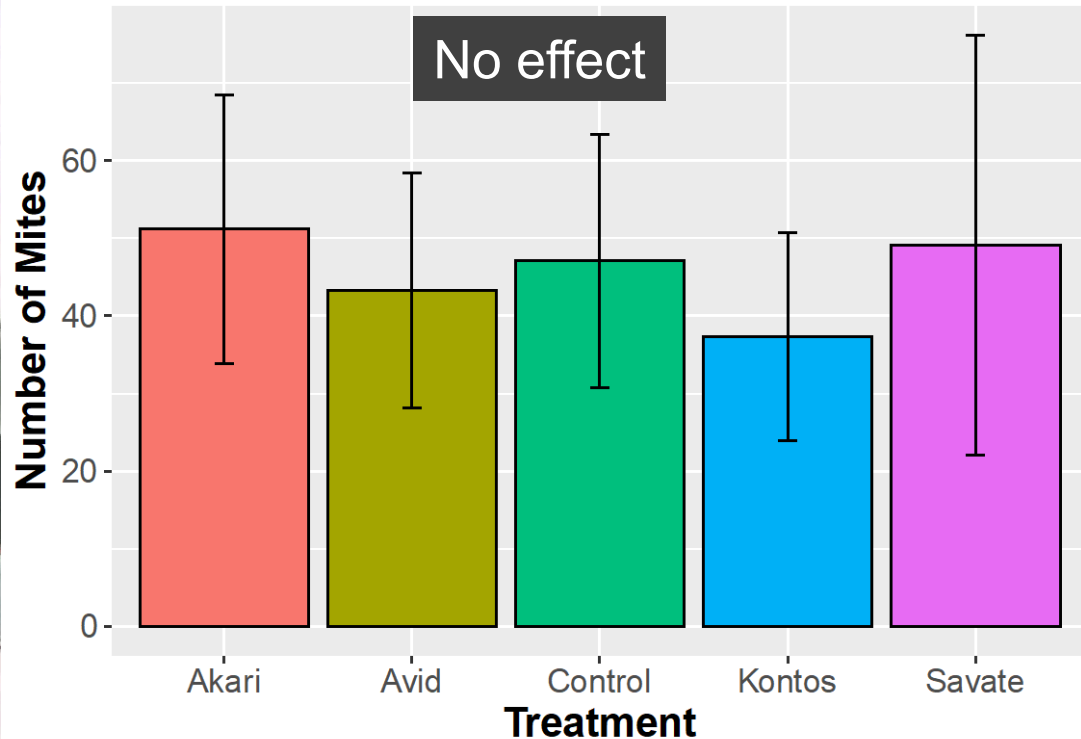
Miticide Trials

Testing many miticides, focus on ones that killed aloe mite

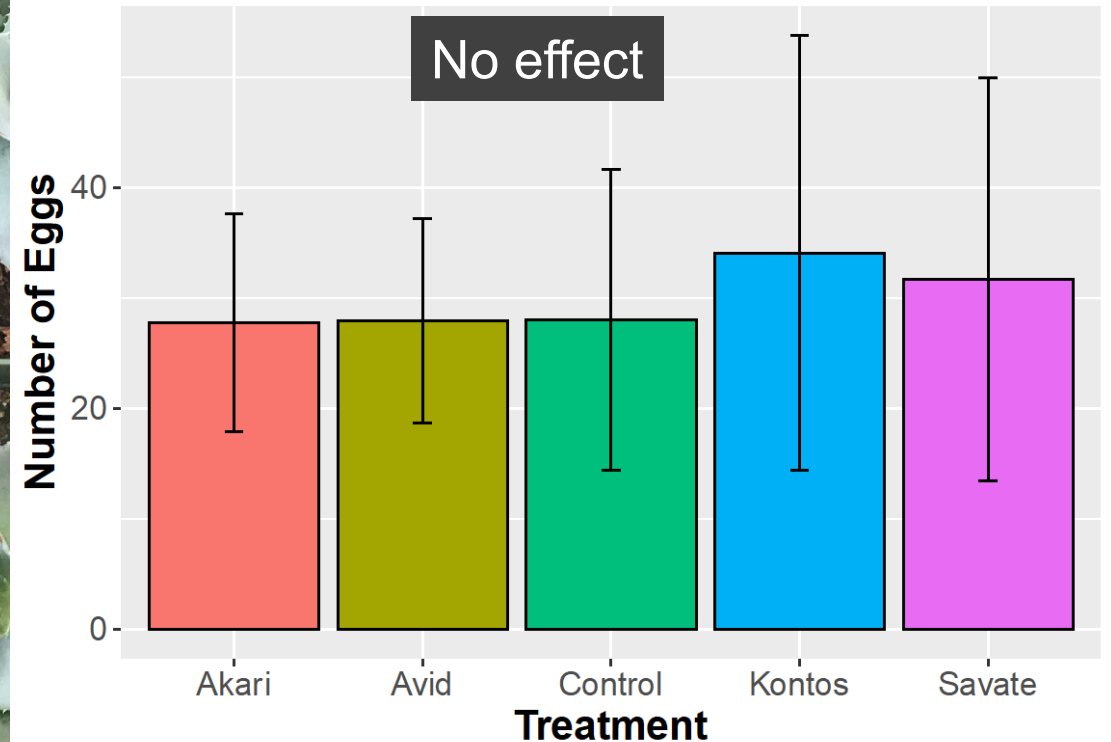
Abamectin, spirotetramat, spiromesifen, fenpyroximate

Avid, Kontos, Savate, Akari

Agave Mite Abundance



Agave Mite Egg Abundance



Miticide Trials

Research is ongoing
Miticides surprisingly ineffective

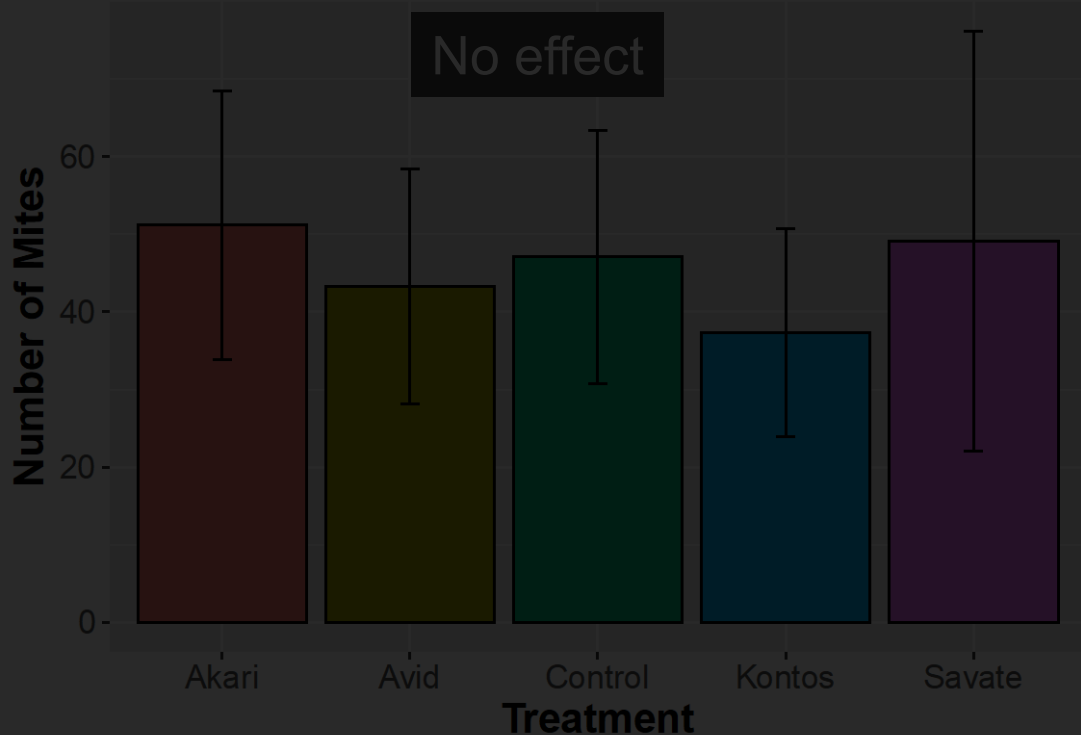
Testing market

mite

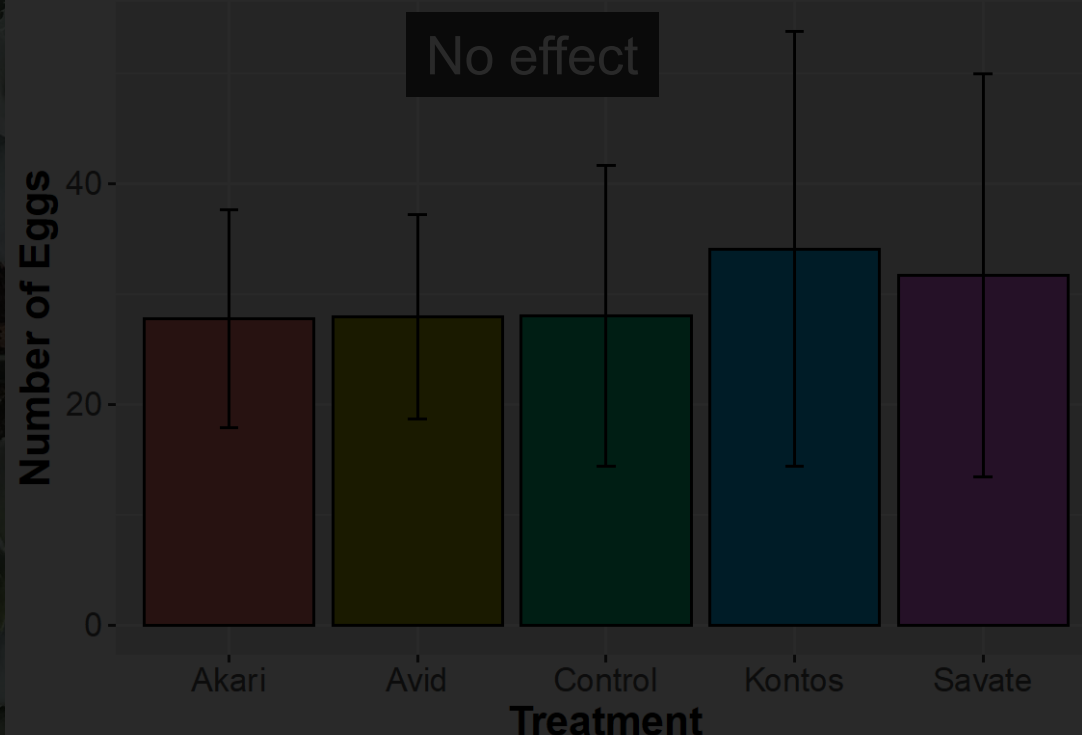
Abamectin, spirotetramat, spiromesifen, fenpyroximate

Avid, Kontos, Savate, Akari

Agave Mite Abundance



Agave Mite Egg Abundance



Miticide Trials

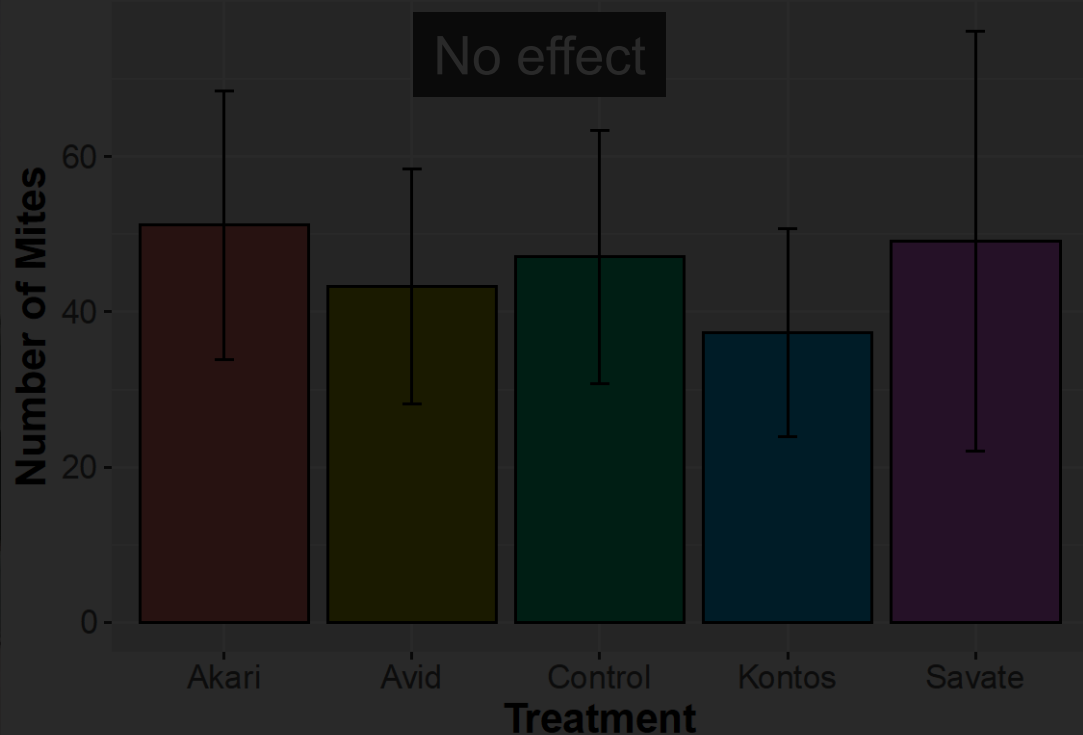
Research is ongoing
Miticides surprisingly ineffective

Testing mar

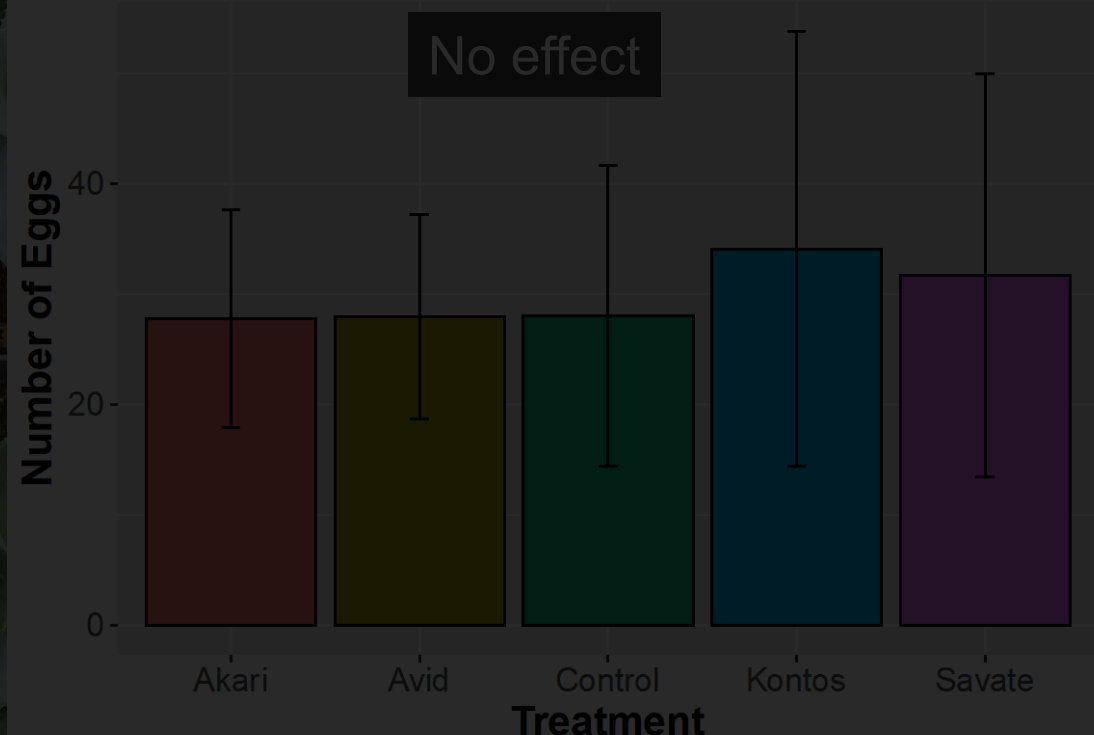
Abamectin, spirotetramat, spiromesifen, fenpyroximate

Avid
Combine with adjuvants: penetration is key!

Agave Mite Abundance

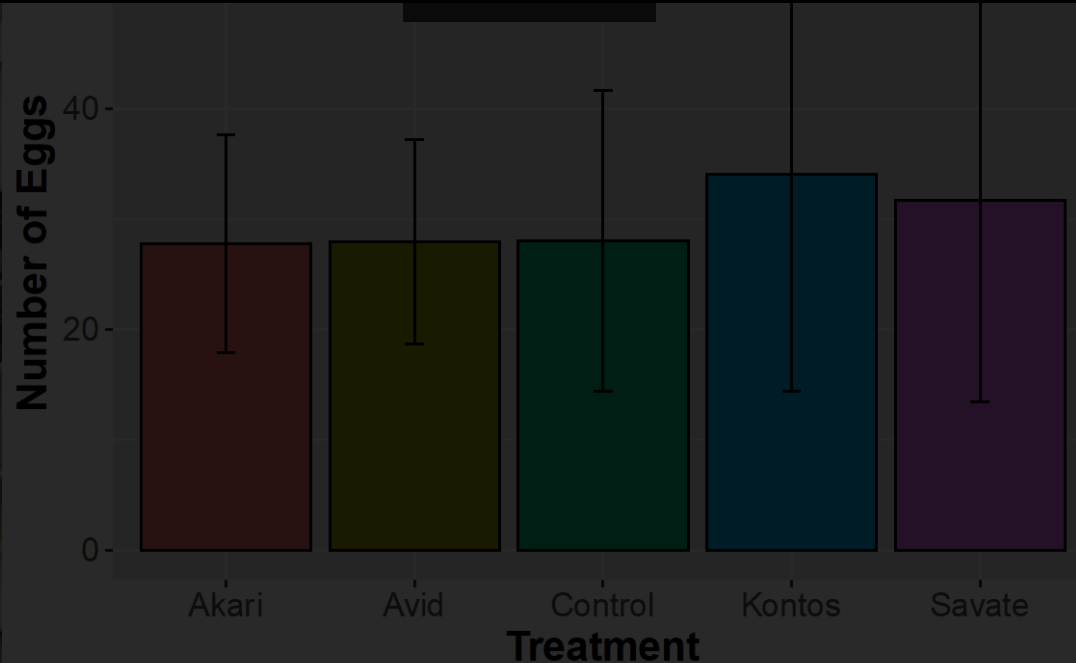
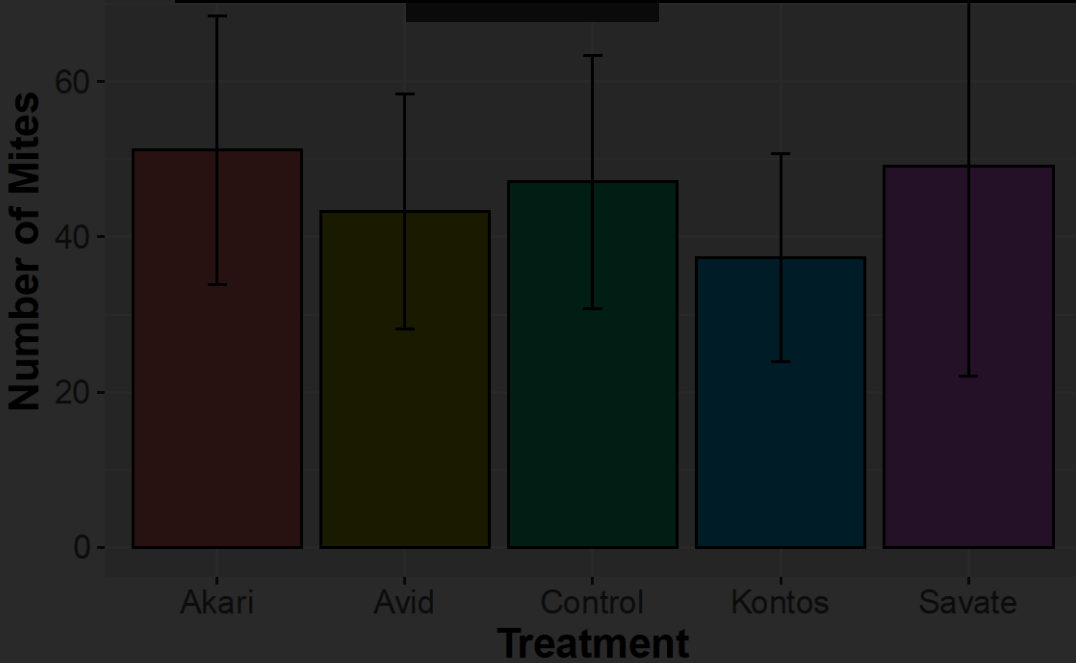


Agave Mite Egg Abundance



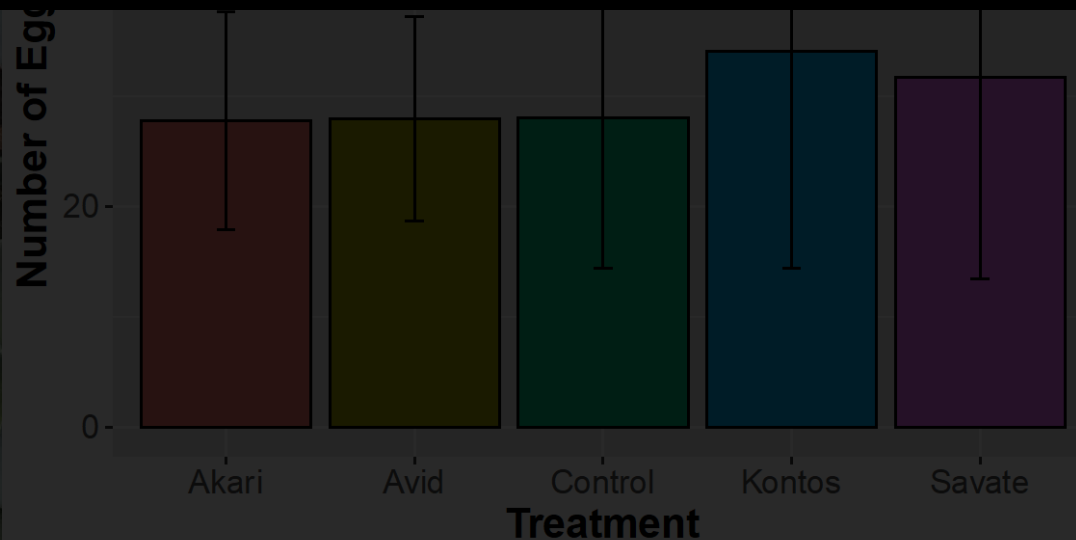
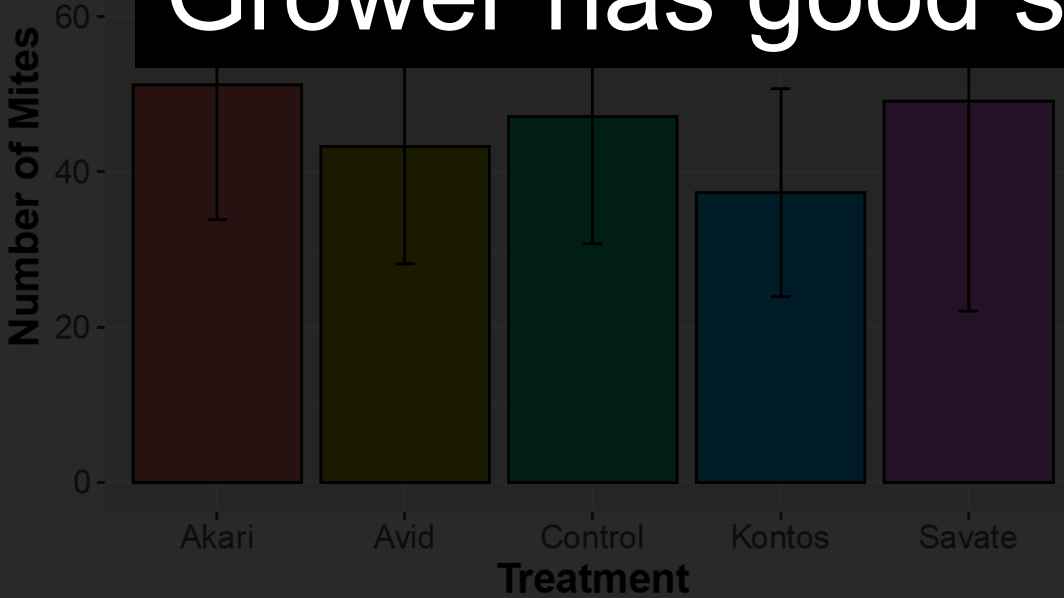
Research is ongoing
Miticides surprisingly ineffective

Combine with adjuvants: penetration is key!
Preventative applications may be better



Research is ongoing
Miticides surprisingly ineffective

Combine with adjuvants: penetration is key!
Preventative applications may be better
Grower has good success with sulfur + capsil



Research is ongoing
Miticides surprisingly ineffective

Combine with adjuvants: penetration is key!
Preventative applications may be better
Grower has good success with sulfur + capsil



Doesn't kill mites already there,
but prevents new infestations

Summary



Summary

Agave mites live hidden in agave
Cause greasy streaks, lesions



Summary

Agave mites live hidden in agave
Cause greasy streaks, lesions

Present for months before symptoms appear
UV light best for finding mites, early lesions



Summary

Agave mites live hidden in agave
Cause greasy streaks, lesions

Present for months before symptoms appear
UV light best for finding mites, early lesions

Prevention is key: Get rid of symptomatic plants
Consider using *N. californicus*, sulfur + Capsil preventatively



Summary

Agave mites live hidden in agave
Cause greasy streaks, lesions

Present for months before symptoms appear
UV light best for finding mites, early lesions

Prevention is key: Get rid of symptomatic plants
Consider using *N. californicus*, sulfur + Capsil preventatively
Very hard to cure existing infestations



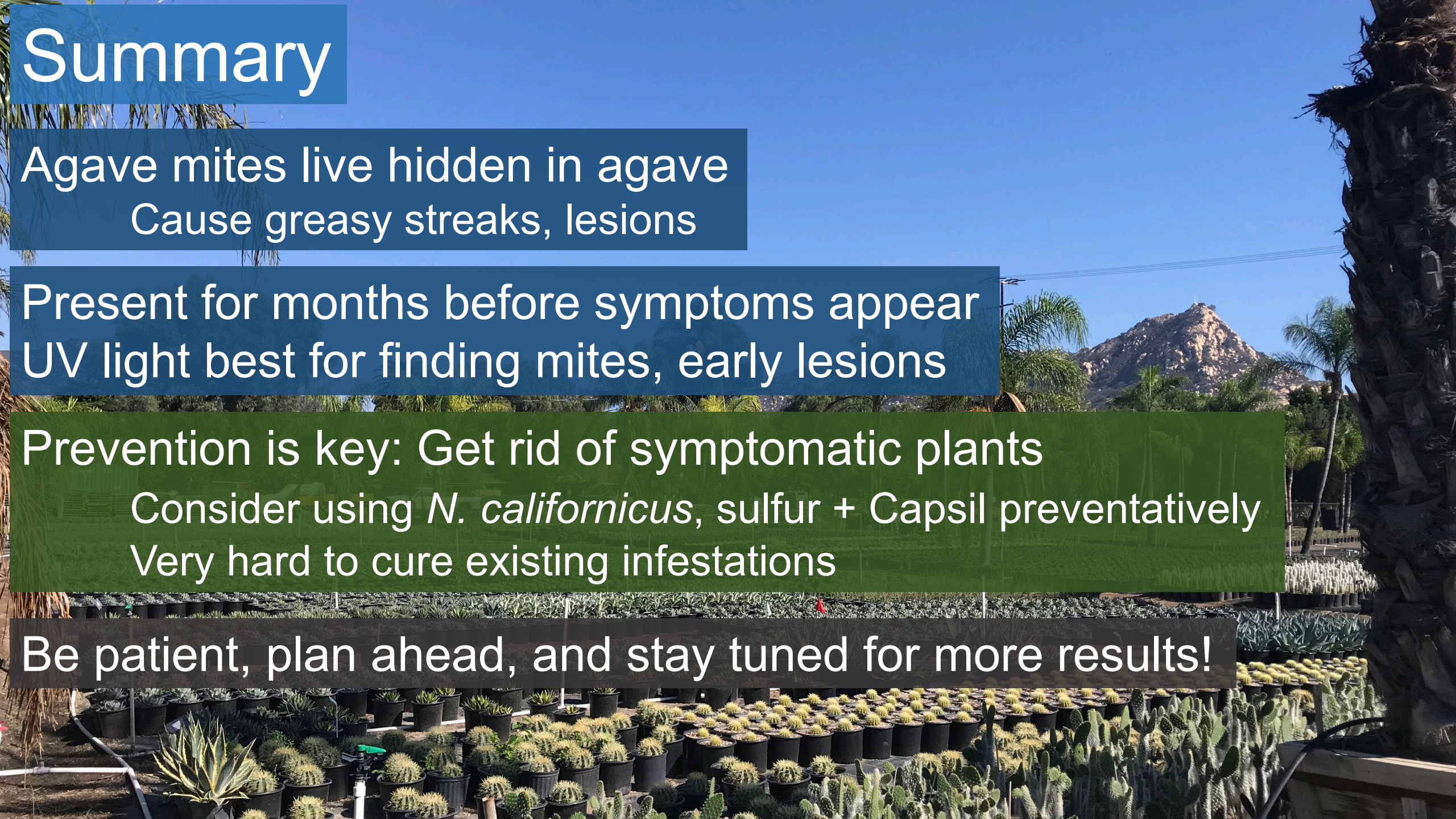
Summary

Agave mites live hidden in agave
Cause greasy streaks, lesions

Present for months before symptoms appear
UV light best for finding mites, early lesions

Prevention is key: Get rid of symptomatic plants
Consider using *N. californicus*, sulfur + Capsil preventatively
Very hard to cure existing infestations

Be patient, plan ahead, and stay tuned for more results!



Summary

Agave mites live hidden in agave
Cause greasy streaks, lesions

Present for months before symptoms appear
UV light best for finding mites, early lesions

Prevention is key: Get rid of symptomatic plants
Consider using *N. californicus*, sulfur + Capsil preventatively
Very hard to cure existing infestations

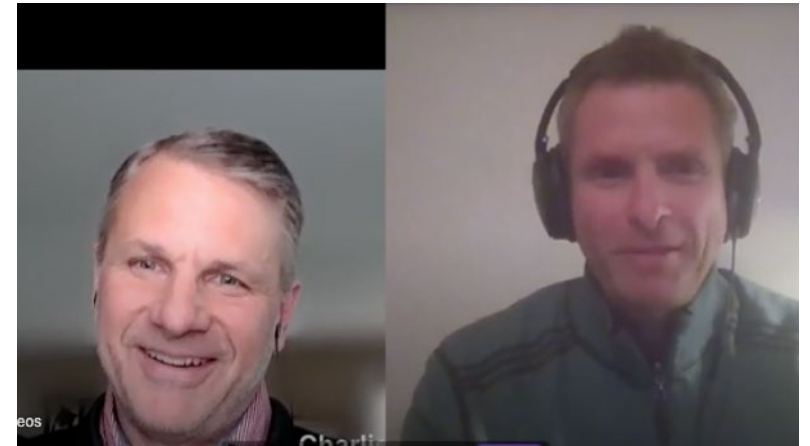
Be patient, plan ahead, and stay tuned for more results!

egmittleton@ucanr.edu

In the Media

- **Cindy Kron** talked with [Good Fruit Grower](#) about baffling borer behavior observed in California pear orchards
- **Kent Daane** and **David Haviland** wrote an article for [Wine Business](#) about controlling vine mealybug
- **Niamh Quinn** told [LAist](#) listeners coyotes may be more aggressive during pupping season. She maps coyote encounters on her [Coyote Cacher](#) website.
- **Chris McDonald** told [Riverside Press-Enterprise](#) that the invasive stinknet plant threatens native habitats.
- **Edith de Guzman** told [Wired](#) that city trees reduce heat-related illness
- **Tori Norville** and **Katie Low** wrote an article on actions to protect farms from wildfire for [Ag Alert](#)

https://ucanr.edu/News/UC_ANR_in_the_news



Maurice Pitesky spoke with [LAist](#), [Real Clear Politics](#) and other news outlets about the threat of avian influenza to chickens and now dairy cows

New Hires: Welcome to UC ANR

April 15-May 13, 2024

Travis	Alexander	MASTER FOOD PRESERVER PROGRAM
Ngodoo	Atume	SUSTAINABLE AG RESEARCH & EDU
Christian	Banderas	INTERMOUNTAIN REC
Matthew	Barnes	UCCE LAKE COUNTY
Victor	Barragan Jr	UCCE RIVERSIDE COUNTY
Erika	Cassio Madrazo	CA INST FOR WATER RESOURCES
Yolanda	Cruz	UCCE STANISLAUS COUNTY
Daphne	Hobbs	HOPLAND REC
Jocelyn	Mobley	SW MSTR GARDENER PROGRAM
Alfonso	Mota	UCCE STANISLAUS COUNTY
Mercy	Mumba	UCCE ALAMEDA COUNTY
George	Nieblas	SOUTH COAST REC
Sara	Reza	UCCE IMPERIAL COUNTY
Sara	Rosenberg	UCCE MARIPOSA COUNTY
Laljeet Singh	Sangha	UCCE KERN COUNTY
Luz Teresa	Sauceda	UCCE SAN JOAQUIN COUNTY
Lorena	Serna Nunez	UCCE ALAMEDA COUNTY
Lindsey	Torres	UCCE VENTURA COUNTY
Tracey	Van Hooser	UCCE MARIN COUNTY



Laljeet Singh Sangha



Ngodoo Atume



Sara Rosenberg

Other Updates

- EFNEP Digital Accessibility – Jan Newman
- Spanish Conversational Class – Ricardo Vela
- ANR Walks Video – Ethan Ireland
- ANR Giving Day Update – Emily Delk
- Celebrate Asian American & Pacific Islander Heritage Month -Friday, May 31, at noon

EFNEP

Digital Accessibility

Presented by Jan Newman

May 16, 2024



UNIVERSITY OF CALIFORNIA
Agriculture and Natural Resources

Expanded Food and Nutrition
Education Program

Expanded Food and Nutrition Education Program (EFNEP)

We teach:

- Nutrition
- Food resource management
- Food Safety
- Physical activity

To a diverse audience of low-income California adults and youth.



What is Digital Accessibility?



Video credit: Deque Systems www.deque.com

Applicability of digital accessibility to EFNEP

Is there a need for EFNEP services to people with disabilities?

According to 2022 U.S. Census data, there are **2.1 million adults** (ages 18-64) **with disabilities in California.***

- **25.5% of them are living in poverty.**
- Disability and poverty affect the whole family, not just the individual.
- EFNEP focuses on those with low-income.
 - **49%** of the families we reach are at or below **100% of the poverty level**, (defined as **\$31,000** for a family of 4**).
 - **Over 80%** of the families we reach qualify for government food assistance.

*<https://www.researchondisability.org/ADSC>

**https://www.cdph.ca.gov/Programs/CID/DOA/Pages/OA_ADAP_Federal_Poverty_Guideline_Chart.aspx



Learning to Shift

39TH ANNUAL
CSUN
ASSISTIVE TECHNOLOGY
CONFERENCE



Usability

39TH ANNUAL
CSUN
ASSISTIVE TECHNOLOGY
CONFERENCE

Ultimately, our focus should be on *usability*:

- Can a visually impaired person use our website with their screen reader?
- Can a hearing-impaired person benefit from our EFNEP in-person and online lessons?
- Can a person using only a keyboard navigate through our forms and educational materials?

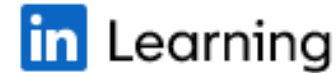
EFNEP Initial Plans

1. Review and quantify our resources
2. Prioritize **existing** external-facing assets
 - Website
 - Social media
 - Videos
 - Google Drive
3. Plan for **new** assets
 - Templates
 - Training
 - Accessibility checks



EFNEP Longer-Range Goals

1. Staff training:
 - UC Learning
 - LinkedIn Learning
 - Microsoft Accessibility Fundamentals Training
 - GSA training
2. EFNEP's participant educational materials and delivery methods
3. Expand outreach
4. Evaluate and remediate internal-facing assets = staff resources.



Conclusion

We all benefit from accessible media, whether we realize it or not.

- Watching videos
- Websites and apps on mobile devices

Interested in learning more?

Jan Newman
jannew@ucanr.edu



UNIVERSITY OF CALIFORNIA
Agriculture and Natural Resources

CONVERSATIONAL SPANISH CLASSES



UC ANR Latinx & Friends ERG
Unión, Respeto, Armonía

TIME TO LEARN

- **Experienced Native speaker teachers**
- **3 levels - Beginner, Intermediate and Advanced**
- **30-minutes interactive class**
- **6 different class schedule options**
- **Small groups**
- **15-minutes interactive conversational group**
- **4 different schedule options**
- **Starting July 9**
- **Ending September 14**





Exploratory survey



Scan me



Scan me

UNIVERSITY OF CALIFORNIA
Agriculture and Natural Resources

QUESTIONS??



CONTACT ME:

rvela@ucanr.edu

UNIVERSITY OF CALIFORNIA
Agriculture and Natural Resources



UC ANR Latinx & Friends ERG
Unión, Respeto, Armonía

UNIVERSITY OF CALIFORNIA
Agriculture and Natural Resources



GIVING TO DAY

UNIVERSITY OF CALIFORNIA
Agriculture and Natural Resources

May 16-17 Noon to Noon

donate.ucanr.edu



Celebrate Asian American & Pacific Islander Heritage Month

Friday, May 31, at 12 noon Via Zoom



UNIVERSITY OF CALIFORNIA
Agriculture and Natural Resources

ANR Moves Video

<https://ucdavis.app.box.com/s/wrp66ymv6zzk91gexkyj5j4ps9nbmeu1>

THANK YOU!

The next town hall will be Star Awards
Thursday, June 20, 2024

 **UNIVERSITY OF CALIFORNIA**
Agriculture and Natural Resources