

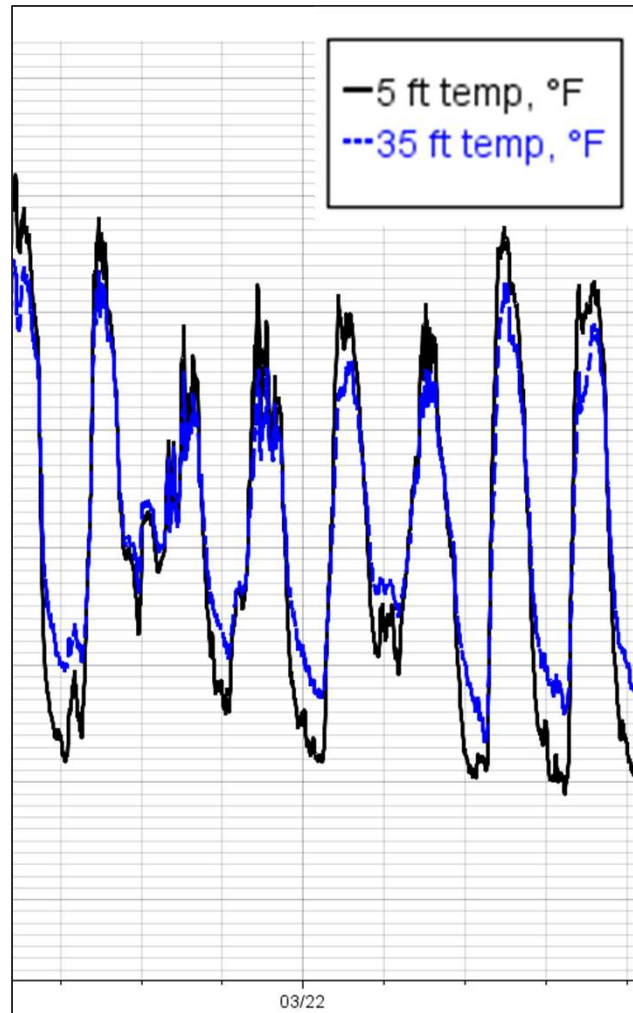
# Using weather data to demonstrate spray drift risk conditions

Mark Battany

Farm Advisor

San Luis Obispo and Santa Barbara Counties

# Temperature inversion for frost protection







ACCELERATING

# SUSTAINABLE PEST MANAGEMENT:

A ROADMAP FOR CALIFORNIA

**DEVELOPED BY:**

Members of the Sustainable Pest Management Work  
Group and Urban Subgroup

**IN COLLABORATION WITH:**

California Department of Pesticide Regulation  
California Department of Food and Agriculture



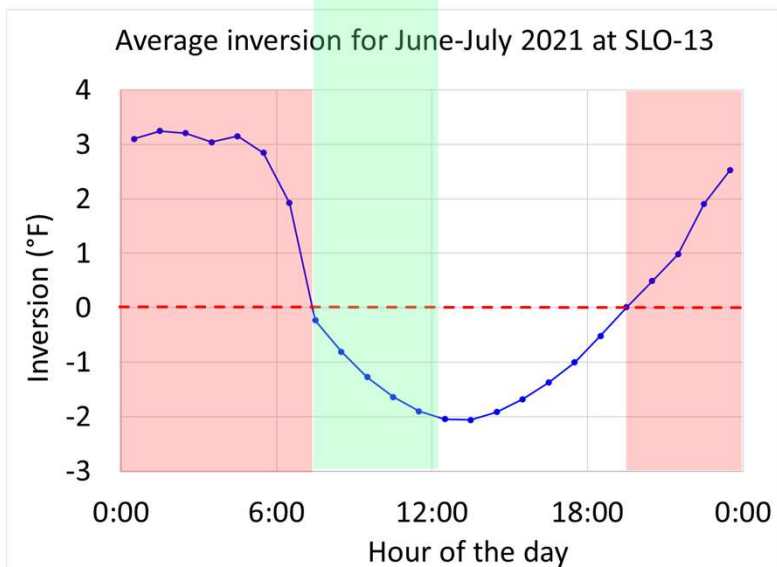
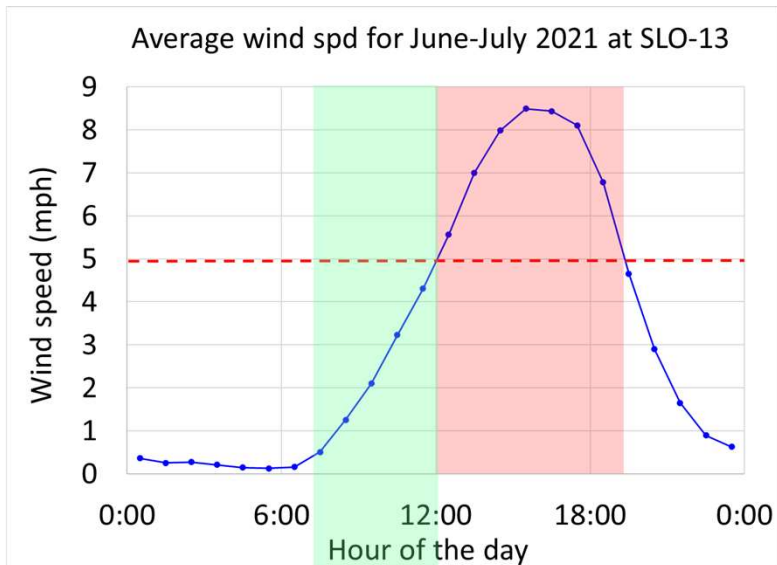
# Temperature inversion

Warmer air

Colder air

Smog over Almaty city, Kazakhstan  
Jan. 12, 2014 9:55 am

Wikimedia Commons  
[Igor Jefimovs](#)



Drift is a very sensitive issue!

- Not all industries/regions want to address this
- My approach: make weather data available, explain how it can be used
- Give industries time to choose to adopt themselves
- Result: This topic is now my most requested one to present on

# Future in California?

- Will UC/DPR/FBI cover the state with towers to track sprays? NO
- Voluntary adoption will need to be local industry-led
- Which industries have the most incentive to do so?



20 SLO County weather stations