

# SAN LUIS OBISPO COUNTY SWINE LEVEL TESTING

## LEVEL 2

PASSING SCORE FOR LEVEL 2 IS 70%

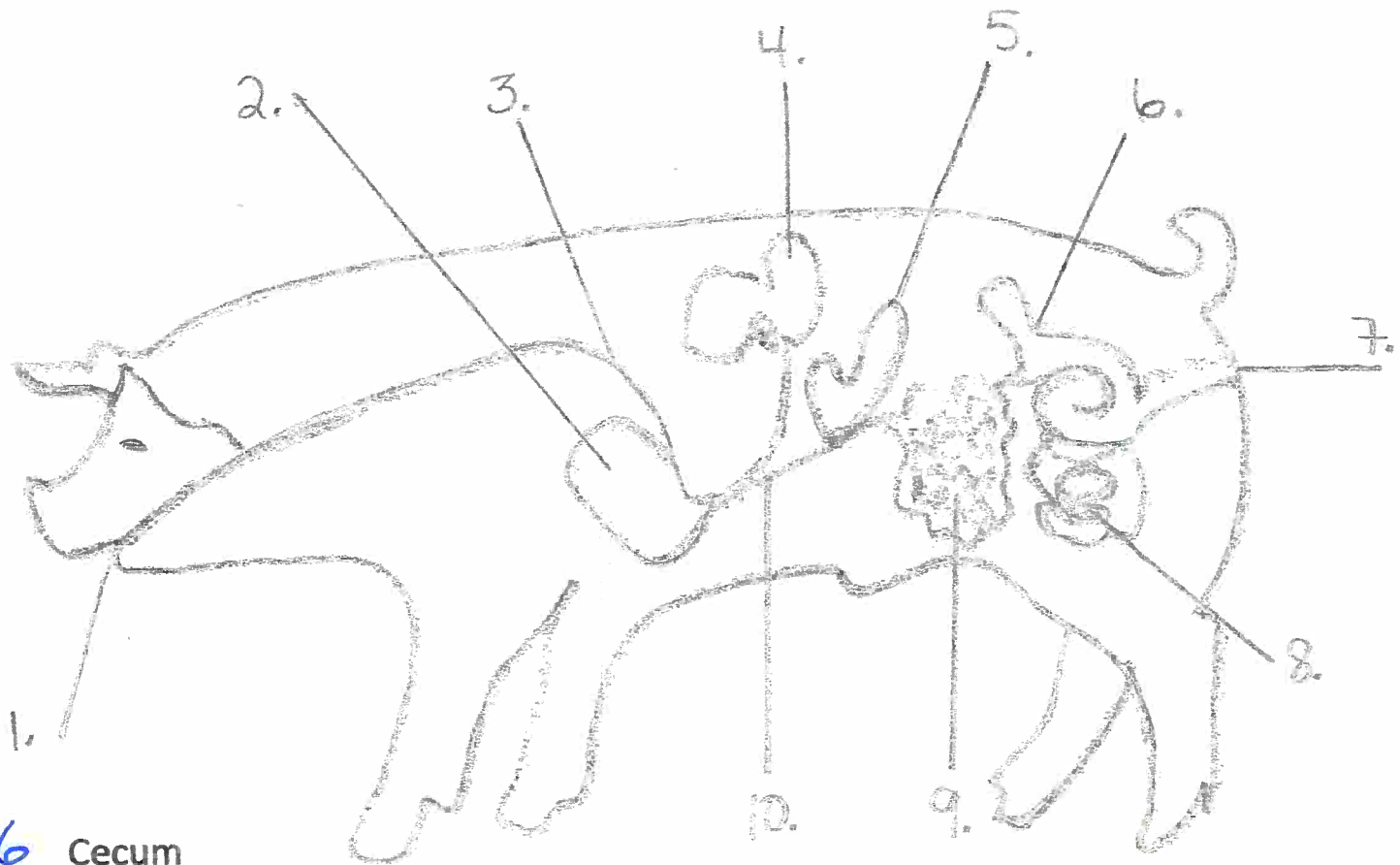
This test will include true/false questions, and multiple choice and fill in the blank. The following Digestive System chart is the one that will be used and all other questions will come from the 4-H Cooperative Curriculum System - "Putting the OINK IN PIG", the Swine project 2 activity book.

Please read the book, (you do not need to do any of the activities to be able to pass the test) spend a good amount of time on the glossary, there will be about 15 terms from there. Study the Digestive System below. There will be Disease Matching from page 14.

Good luck. See you at level testing day.

## Digestive System

Place the number on the line beside the word that most describes the digestive system part.



- 6 Cecum
- 8 Colon
- 10 Duodenum
- 3 Esophagus
- 4 Liver
- 1 Mouth
- 5 Pancreas
- 7 Rectum
- 9 Small Intestine
- 2 Stomach