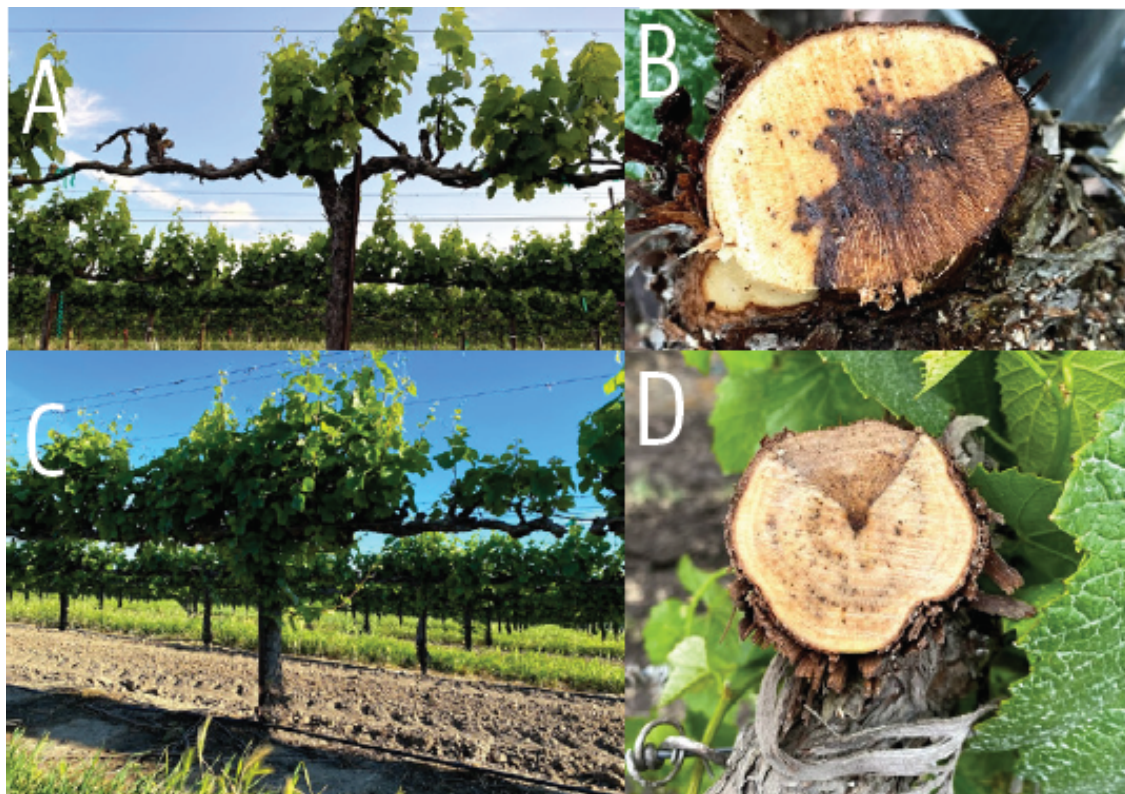


Grapevine Trunk Diseases

Research Updates for Pruning Wound Protection Strategies

By Robert Blundell and Akif Eskalen - May 18, 2021



(<http://progressivecrop.com/wp-content/uploads/2021/05/2-2.png>)

Figure 2. Symptoms of grapevine trunk diseases on mature vines: a) classic dead arm symptoms of *Botryosphaeria dieback* disease; b) wedge-shaped canker characteristic of *Botryosphaeria dieback*; c) *Eutypa dieback* include stunted shoots with necrotic leaves; and d) canker and internal necrotic wedge-shaped staining in cross section of cordon characteristic of *Eutypa dieback*.

Grapevine trunk diseases (GTDs) are currently considered one of the most important challenges for viticulture worldwide. These widespread damaging diseases are caused by a broad range of permanent, wood-colonizing fungal pathogens, which primarily gain entry into grapevines via pruning wounds. GTDs can also reside latently within tissue as part of the normal grapevine microbiota, and environmental factors may trigger their switch to pathogenic.

The economic impact of GTDs can be significant in both young and mature vines, with Black foot disease and Petri disease being predominant in young vines. In mature vines, Esca (Figure 1), *Botryosphaeria dieback* (Figure 2a and 2b), *Eutypa dieback* (Fig. 2c and 2d) and *Phomopsis dieback* are damaging and referred to as canker diseases due to characteristic cankers they cause in vines. Other major symptoms of their presence include poor vigor, leaf chlorosis (Fig. 1a), berry specks and shoot and tendril dieback. Perennial cankers cause spur, cordon and trunk dieback and ultimately result in death of the entire vine.



(<http://progressivecrop.com/wp-content/uploads/2021/05/a.png>)

Figure 1. Symptoms of esca vine decline: a) classic leaf stripe symptoms of esca; b) cross-section showing central white rot and canker on esca infected vine; and c) black spot and sectorial necrosis of esca-infected vine.

The majority of the fungal pathogens responsible for GTDs produce overwintering fruiting structures containing the infectious spores of the pathogen. These overwintering structures can be found on the bark surface of infected vines as well as on pruning and harvesting debris on vineyard floors. Another source of GTD fungal inoculum (spores) is from other woody perennial crops such as nut trees which are known to be infected by GTDs.

Under conducive environmental conditions, largely precipitation events, the fruiting bodies release fungal spores which land on exposed pruning wounds, causing infection and thus completing their life cycle. Research has identified that the majority of spore release in California occurs during winter following precipitation (December to February), which also overlaps with pruning timing, thus creating a window

for GTDs to infect vines. With this knowledge, pruning wound protection strategies alongside cultural practices are the best strategies to mitigate GTDs. Cultural practices are focused around sanitation, including using clean material when establishing a new vineyard, removal of pruned and infected material and pruning dead shoots, spurs and cordons below symptomatic tissue. Delayed pruning after the high disease pressure period has passed is another good option in California to mitigate GTD infection.

The most effective way to protect pruning wounds from airborne fungal spores of GTDs is to apply registered chemical and/or biological pruning wound protectants. Ideally, these protectants should be applied shortly after pruning and in a dry weather window to avoid rain washing the solution away. The damaging effects of GTDs on vineyard longevity are likely to be reduced significantly if protectants are adopted when vines are young and subsequently applied annually.

Commercial chemical protectants such as a combination of Rally and Topsin M have been shown to be effective in controlling GTDs. With a need for sustainable alternatives, there is huge interest in the research, development and use of biological pruning wound protectants. Biological pruning wound protectants exploit beneficial micro-organisms that possess either natural antagonistic activity or compete with the pathogen by colonizing the pruning wound faster to provide protection from GTD pathogens. Several commercially available beneficial microorganisms, including *Trichoderma* spp. and *Bacillus* spp., have been shown to provide protection against GTDs (Brown et al. 2020; Kotze et al. 2011; Halleen et al. 2010; John et al. 2008). As well as being an alternative to fungicides, it is thought that biologicals could provide prolonged protection once they have colonized the pruning wound.

Treatment or Trade Name	Active Ingredient	Manufacturer	Application rate per acre (100gal)
Water treated - Non inoculated negative control	N/A	N/A	N/A
Water treated - Inoculated positive control	N/A	N/A	N/A
Terramera (Exp B)	Caprylic acid	Terramera Inc.	2.4 (%w/v)
Luna Sensation	Fluopyram/Trifloxystrobin	Bayer CropScience	5.0 fl oz
Topsin M + Rally	Thiophanate-methyl	DOW AgroSciences LLP	1.25 lbs + 2.25 oz
BioTam + Crab Life-Powder	<i>Trichoderma asperellum</i> and <i>Trichoderma gamsii</i> + a blend of crab and lobster shell powder	Isagro USA + Conchazul de Mexico	2 lb + 0.5 lb
Crab Life Powder	A blend of crab and lobster shell powder	Conchazul de Mexico	0.5 lb
Biotam	<i>Trichoderma asperellum</i> and <i>Trichoderma gamsii</i>	Isagro USA	2 lb
GCM	<i>Bacillus velezensis</i>	N/A	Apply fermented product
Vintec	<i>Trichoderma atroviride</i>	Bi-PA	2.8 oz
Serenade	<i>Bacillus subtilis</i> strain QST 713	Bayer CropScience	2 qt
Botector	<i>Aureobasidium pullulans</i> strain DSM14940/14941	Westbridge Agricultural Products	100 gal
UCD 8717	<i>Trichoderma hamatum</i>	N/A	1x10 ⁸ s/ml
UCD 8189	<i>Aureobasidium pullulans</i>	N/A	1x10 ⁸ s/ml
UCD 8745	<i>Bacillus</i> sp.	N/A	Apply fermented product

(<http://progressivecrop.com/wp-content/uploads/2021/05/Table-1-1.png>)

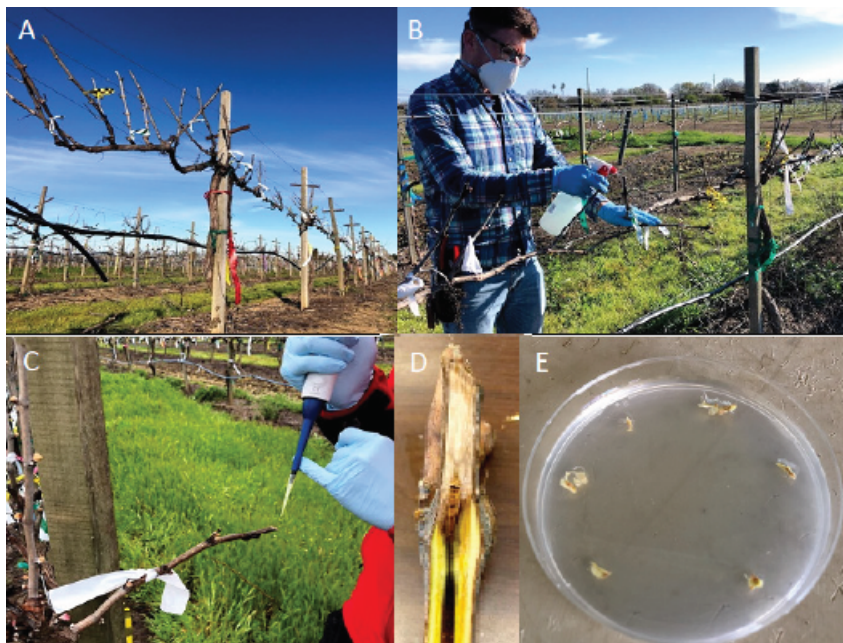
Table 1. List of all treatments used in the study, including their active ingredient, manufacturer and application rate.

Methodology

This comprehensive study was performed to evaluate a variety of registered and experimental chemical and biological agents to protect pruning wounds (Table 1) from the fungal pathogens *Neofusicoccum parvum* and *Eutypa lata*, which are aggressive causal agents of the GTDs *Botryosphaeria dieback* and *Eutypa dieback*, respectively. This study was set up in both a wine grape and table grape commercial vineyard in Sacramento County (cv Cabernet Sauvignon) and Kern County (cv Allison), respectively.

All study vines were pruned (one foot long) in February (Figure 3a), and within 24 hours of pruning, the liquid protectants were sprayed with a one-liter hand-held spray bottle on the pruning wound until runoff (Figure 3b). All protectants were prepared according to their label recommendations. The following day, canes treated with a chemical protectant were inoculated with roughly 2000 spores of either *N. parvum* or *E. lata*. Canes treated with a biological protectant were inoculated with the same amount of spores of

either *N. parvum* or *E. lata* seven days after treatment application (Figure 3c). The positive control treatment had sterile distilled water applied to wounds and was inoculated with the same amount of spores of each pathogen. Eight months after inoculation, treated canes were collected and brought to the lab for further evaluation. Each cane was split with a knife longitudinally (Figure 3d) and segments were excised and plated on a growth medium to confirm the pathogen that was inoculated (Figure 3e). After incubation for 5 to 14 days at room temperature, recovery of fungal pathogens was recorded by their morphological characteristics. The efficacy of the treatments controlling the GTDs was calculated as the Mean Percent of Infection (MPI) using the following formula: Number of GTD-infected samples (canes from which the pathogen could be re-isolated)/total number of canes inoculated x 100.



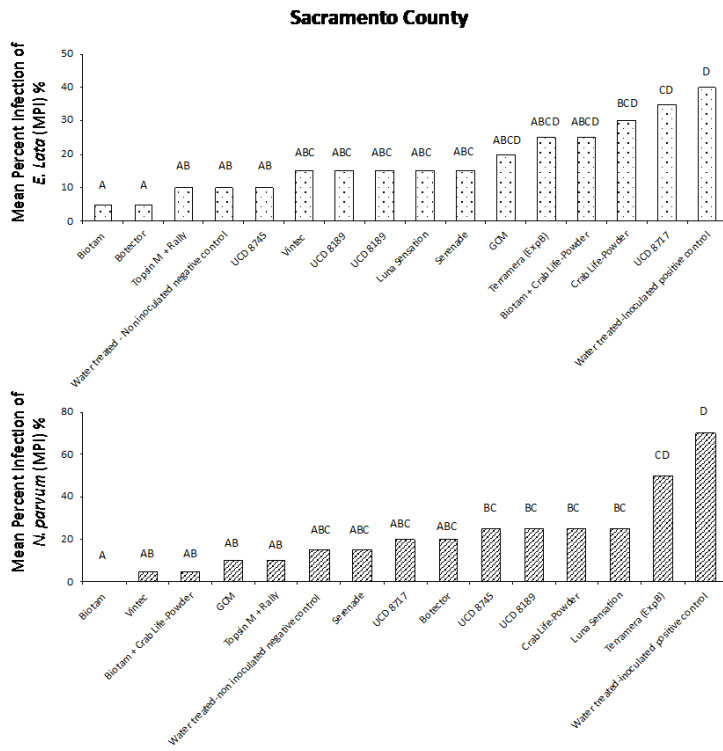
(<http://progressivecrop.com/wp-content/uploads/2021/05/3-1.png>)

Figure 3. a) Spur pruning of vines in February 2020; b) application of protectants; c) inoculation of pruned canes with GTDs; d) treated canes split longitudinally; and e) isolated segments cultured on growth media.

Results

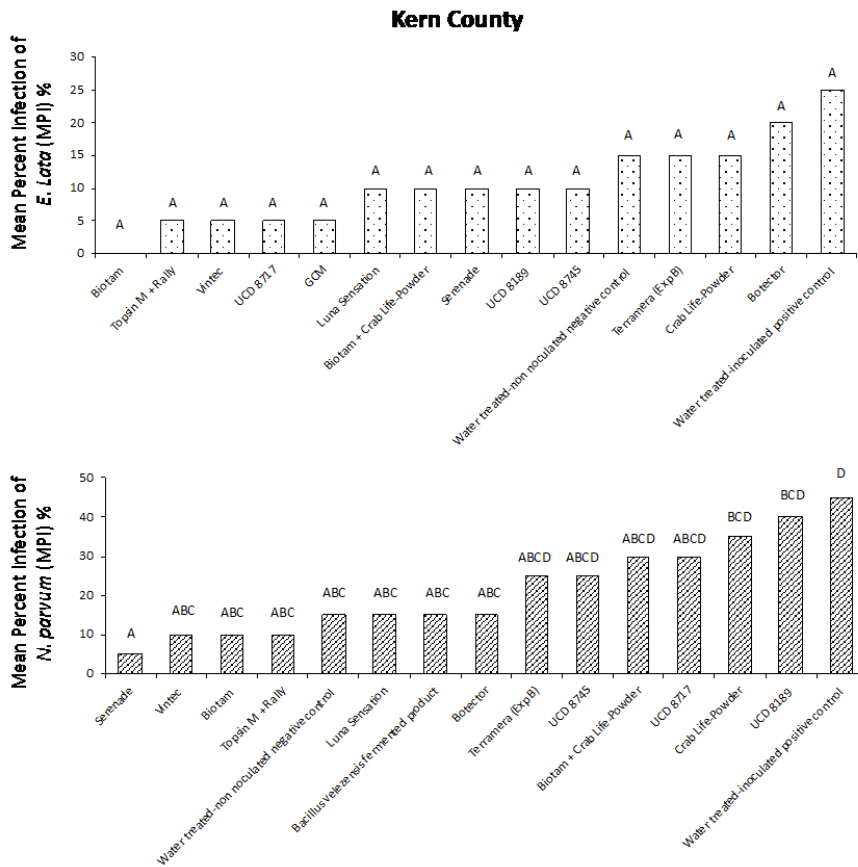
Our results from both field studies show that Biotam, a Trichoderma-based biological product, was the superior protectant overall, providing a consistently high level of pruning wound protection compared to the water-treated, inoculated positive control. In the Sacramento County trial, Biotam application resulted in an MPI of 5% and 0% for *E. lata* and *N. parvum*, respectively, compared to the water-treated, inoculated positive control with an MPI of 40% and 70% for *E. lata* and *N. parvum*, respectively (Figure 4a and 4b). In Kern County, Biotam application resulted in an MPI of 0% and 10% for *E. lata* and *N. parvum*, respectively, compared to the water-treated, inoculated positive control with an MPI of 25% and 45% for *E. lata* and *N. parvum*, respectively (Figure 5a and 5b). This shows that Biotam is capable of providing simultaneous pruning wound protection against multiple fungal pathogens of GTDs, which is often challenging for protectants to achieve.

Another Trichoderma-based biological product, Vintec, was also effective at protecting wounds. Application of Vintec (2.8 oz/A) resulted in an MPI of 15% and 5% for *E. lata* and *N. parvum*, respectively, in Sacramento County (Figure 4a and 4b, see page 50) and an MPI of 5% and 10% for *E. lata* and *N. parvum*, respectively, in Kern County (Figure 5a and 5b).



(<http://progressivecrop.com/wp-content/uploads/2021/05/Figure-4.png>)

Figure 4. Evaluation of treatments for pruning wound protection of *E. lata* (a) and *N. parvum* (b) in Sacramento County.



(<http://progressivecrop.com/wp-content/uploads/2021/05/Figure-5.png>)

Figure 5. Evaluation of treatments for pruning wound protection of *E. lata* (a) and *N. parvum* (b) in Kern County.

Our results also showed that the chemical protectants Topsin M + Rally and Luna Sensation were effective at providing simultaneous pruning wound protection of *E. lata* and *N. parvum* in both Sacramento and Kern County trials. Application of Topsin M + Rally resulted in an MPI of 10% for both *E. lata* and *N. parvum* in Sacramento County (Fig. 4a and 4b, see page 50) and an MPI of 5% and 10% for *E. lata* and *N. parvum*, respectively, in Kern County (Figure 5a and 5b, see page 50). Several naturally occurring biocontrol agents, including *Trichoderma hamatum* (UCD 8717), *Aureobasidium pullulans* (UCD 8189) and *Bacillus* sp. (UCD 8745), that were identified in California vineyards were also performing very well compared with other commercially available products (Figure 4 and 5).

In conclusion, our 2020 field trials have shown that several biological and chemical treatments can provide efficient protection of pruning wounds of grapevine against one or more fungal pathogens responsible for the major grapevine trunk diseases (*Esca*, *Botryosphaeria dieback* and *Eutypa dieback*). Moreover, improving accurate diagnosis of GTDs will be essential in determining an effective product.

References

Brown, A.A., Travadon, R., Lawrence D.P., Torres, G., Zhuang., and Baumgartner, K. 2021. Pruning-wound protectants for trunk-disease management in California table grapes. *Crop Protection*, 141.

Halleen, F., Fourie, P.H., and Lombard, P.J. 2010. Protection of grapevine pruning wounds against *Eutypa lata* by biological and chemical methods. *A. Afr. J. Enol. Vitic.* 31: 125–132.

Kotze, C., Van Niekerk, J., Mostert, L., Halleen, F., and Fourie, P. 2011. Evaluation of biocontrol agents for grapevine pruning wound protection against trunk pathogen infection. *Phytopathol. Mediterr.* 50: 247–263.

John, S., Wicks, T.J., Hunt, J.S., and Scott, E.S. 2008. Colonisation of grapevine wood by *Trichoderma harzianum* and *Eutypa lata*. *Aust. J. Grape Wine Res.* 14:18-24.
