

## *Penstemon heterophyllus* 'Margarita BOP'

Chart 7a (on all graphs, error bars represent  $\pm 1$  SE)

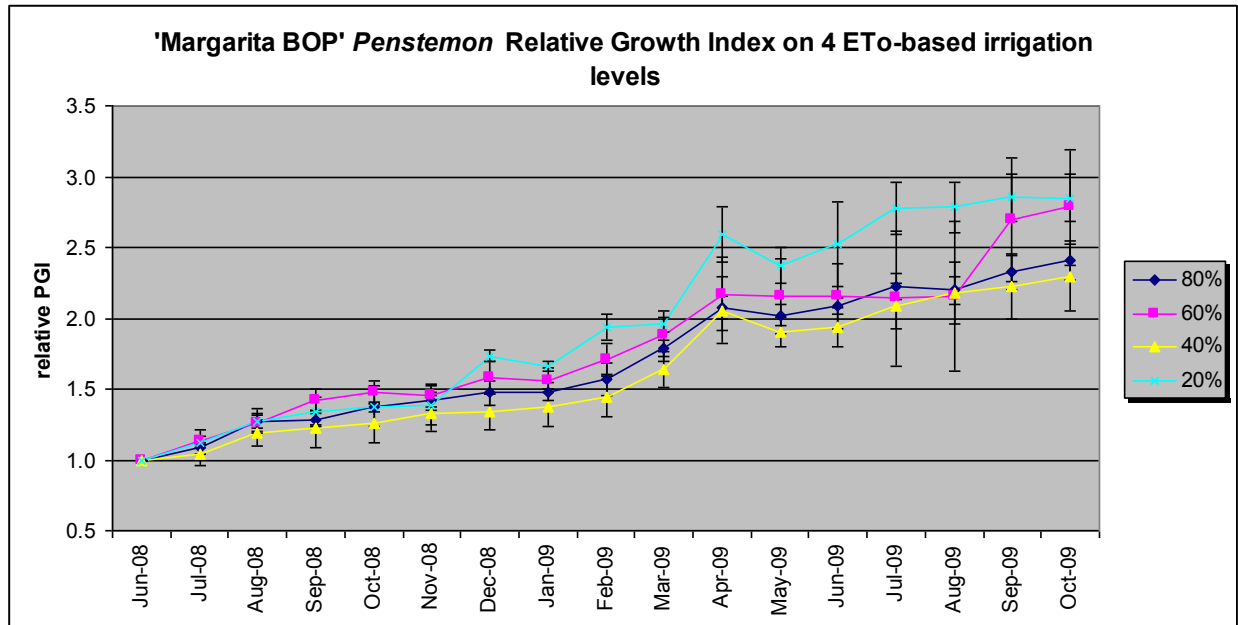
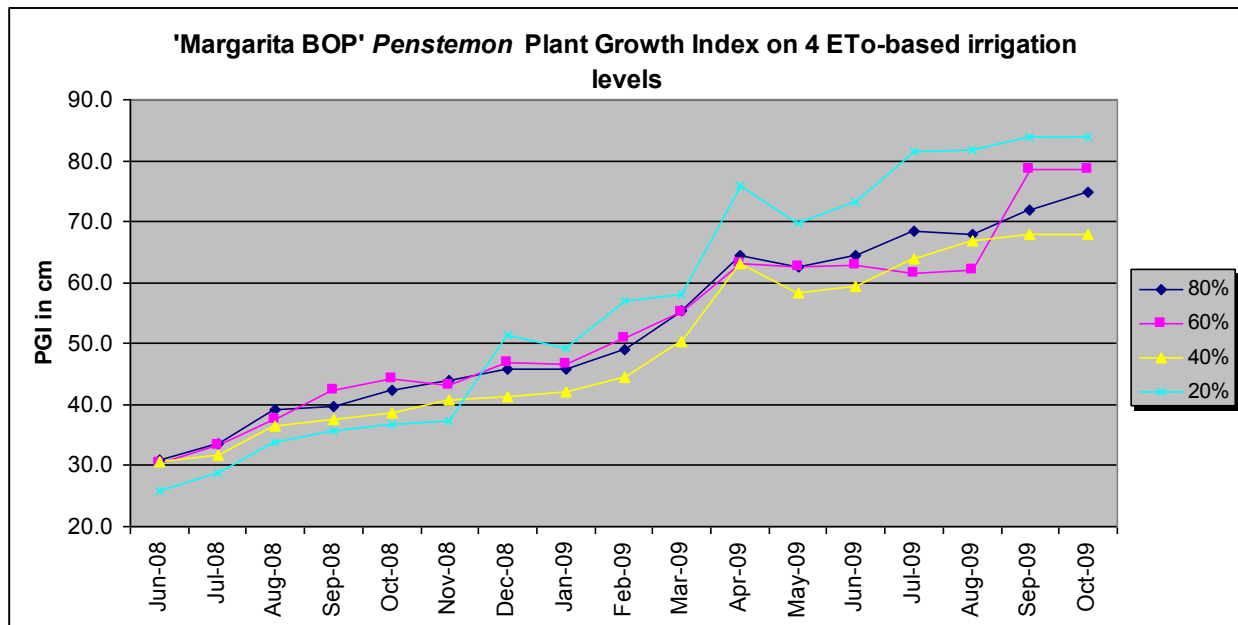


Chart 7b



Though it is difficult to see here, there is a small but significant difference between the 20 and 60% and the 40 and 80% treatments.

At the end of 2 years, average height and width grew from 7" X 16" to 13" x 47".

## QUALITY RATINGS DURING DEFICIT IRRIGATION

Table 7a (all ratings are based on a 1-5 scale)

<b><i>Penstemon 'Margarita BOP'</i></b>				
foliage	JUNE	JULY	AUG	SEPT
80%	4.0	3.8	4.2	<b>3.9</b>
60%	3.5	<b>5.0</b>	4.3	3.8
40%	4.3	4.0	3.6	3.8
20%	<b>5.0</b>	<b>5.0</b>	<b>5.0</b>	<b>4.0</b>
flower				
80%	2.7	2.7	1.7	<b>1.3</b>
60%	3.0	2.7	1.0	1.0
40%	2.8	2.4	1.3	1.0
20%	<b>3.7</b>	<b>3.2</b>	<b>2.0</b>	1.0
vigor				
80%	<b>4.8</b>	4.2	4.2	4.3
60%	3.5	4.7	4.7	4.3
40%	4.5	4.4	4.0	3.8
20%	<b>4.7</b>	<b>5.0</b>	<b>5.0</b>	<b>5.0</b>
average				
80%	4.4	4.0	4.2	4.1
60%	3.5	4.8	4.5	4.1
40%	4.4	4.2	3.8	3.8
20%	<b>4.8</b>	<b>5.0</b>	<b>5.0</b>	<b>4.5</b>

Highest values within 0.1 are bolded

## IRRIGATION TRIALS QUALITY COMMENT SUMMARY

1. Needs deadheading after major bloom slows to maintain an attractive appearance.
2. Can get old and leafless in the center; would benefit from cutting back in spring to rejuvenate growth.

## MASTER GARDENERS' DATA- YEAR 1

Table 7b (all ratings are based on a 1-5 scale)

<b>Penstemon 'Margarita BOP' Average Annual Ratings by County for Year 1</b>													
<b>Sunset Zone</b>	14	8		7	7	22/23	18/19	14	15	23	24	9	
<b>County</b>	Alameda	Fresno	LA	Mariposa	Nevada	Orange	Riverside	San Joaq.	Santa Cla	SD Pt. Loma	SD Flbrk	Shasta	AVG
<b>Foliage</b>	3.9	4.9	4.2	5.0	4.9	4.4	4.7	3.9	4.8	4.0	3.8	4.2	<b>4.4</b>
<b>Flowering</b>	2.3	3.6	3.3	2.3	2.9	2.4	2.9	2.3	2.1	3.0	1.8	2.8	<b>2.6</b>
<b>Pest resistance</b>	5.0	5.0	4.7	5.0	5.0	5.0	5.0	5.0	5.0	5.0	5.0	5.0	<b>5.0</b>
<b>Disease resistance</b>	5.0	5.0	4.8	5.0	4.9	5.0	4.9	5.0	5.0	5.0	5.0	4.9	<b>5.0</b>
<b>Vigor</b>	3.8	4.9	4.2	5.0	4.9	4.5	6.5	3.9	4.8	3.8	3.9	4.3	<b>4.5</b>
<b>AVG</b>	<b>4.1</b>	<b>4.9</b>	<b>4.4</b>	<b>4.9</b>	<b>4.7</b>	<b>4.5</b>	<b>4.8</b>	<b>4.1</b>	<b>4.5</b>	<b>4.3</b>	<b>3.9</b>	<b>4.4</b>	<b>4.5</b>

Chart 7c

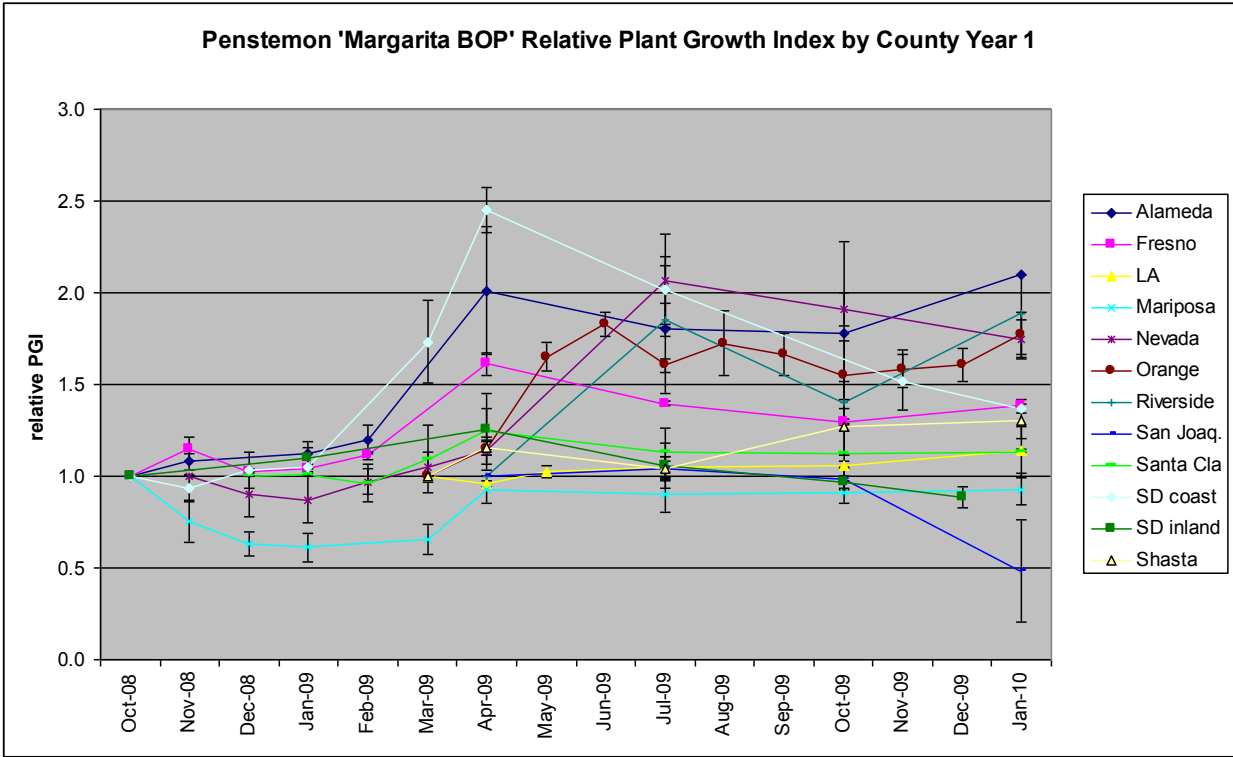
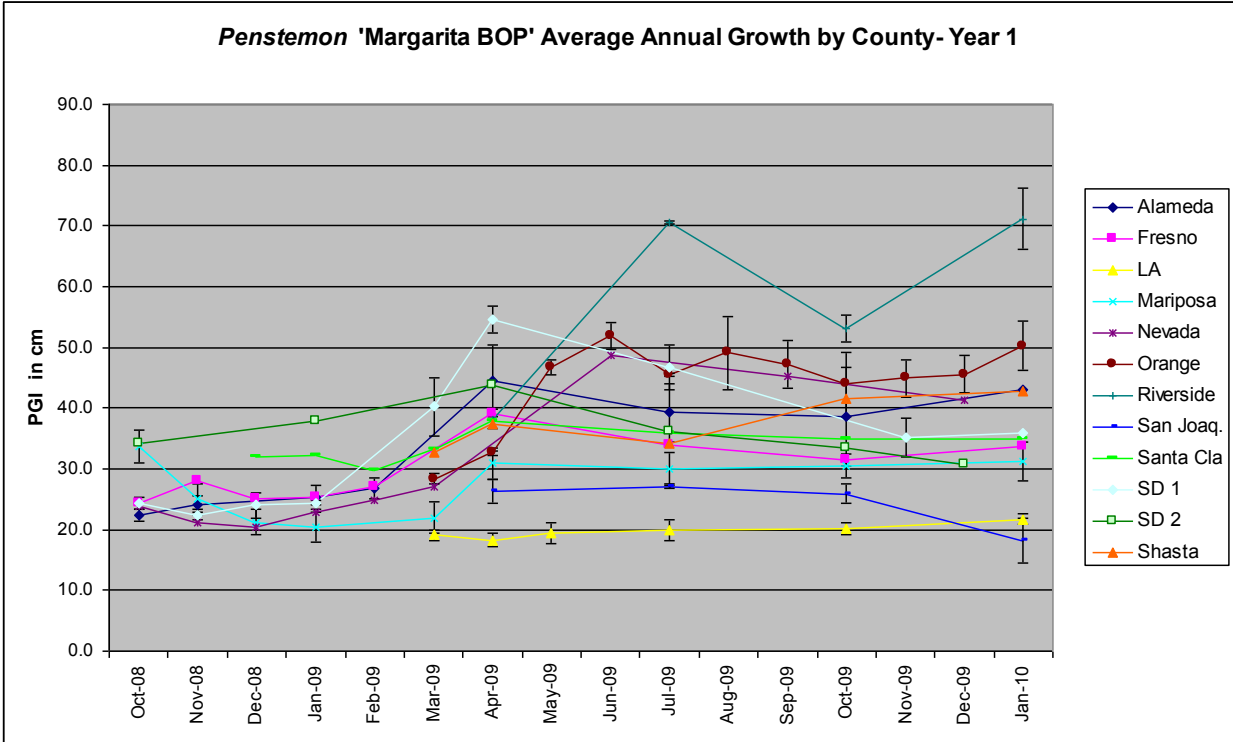


Chart 7d



## **MASTER GARDENER COMMENT SUMMARY**

1. Variable performance in the first year.
2. Plants survived snowfall well.

There were some statistically significant differences between counties during the first year. Some of those differences were due to time of planting, irrigation failures and animal browsing, so it's difficult to draw meaningful conclusions from the first year's County data, but the standard error bars were included to show the differences in the results.