

## PHOTOS, TABLES, AND FIGURES

Table 16. Average monthly quality ratings for *Lomandra* ‘Bushland Green’ on 4 ET<sub>0</sub>-based irrigation levels in 2014.

|                           | March | April | May | June | July | Aug | Sept | Oct | AVG        |
|---------------------------|-------|-------|-----|------|------|-----|------|-----|------------|
| <b>Foliage</b>            |       |       |     |      |      |     |      |     |            |
| 80%                       | 4.0   | 5.0   | 5.0 | 5.0  | 4.6  | 4.2 | 4.4  | 4.4 | <b>4.6</b> |
| 60%                       | 3.5   | 4.5   | 4.5 | 4.8  | 5.0  | 4.5 | 4.5  | 4.3 | <b>4.4</b> |
| 40%                       | 4.0   | 5.0   | 5.0 | 5.0  | 5.0  | 5.0 | 5.0  | 5.0 | <b>4.9</b> |
| 20%                       | 4.0   | 5.0   | 5.0 | 5.0  | 5.0  | 4.6 | 4.6  | 4.6 | <b>4.7</b> |
| <b>Flowering</b>          |       |       |     |      |      |     |      |     |            |
| 80%                       | 4.0   | 4.6   | 4.5 | 4.8  | 5.0  |     | 1.0  | 2.0 | <b>3.7</b> |
| 60%                       | 3.3   | 4.0   | 4.3 | 4.3  | 4.0  |     | 1.5  | 1.8 | <b>3.3</b> |
| 40%                       | 4.5   | 5.0   | 4.8 | 5.0  | 5.0  |     | 1.5  | 1.8 | <b>3.9</b> |
| 20%                       | 4.4   | 5.0   | 4.8 | 4.4  | 4.4  | 1.0 | 1.3  | 1.8 | <b>3.4</b> |
| <b>Pest Tolerance</b>     |       |       |     |      |      |     |      |     |            |
| 80%                       | 5.0   | 5.0   | 5.0 | 5.0  | 5.0  | 5.0 | 5.0  | 5.0 | <b>5.0</b> |
| 60%                       | 5.0   | 5.0   | 5.0 | 5.0  | 5.0  | 5.0 | 5.0  | 5.0 | <b>5.0</b> |
| 40%                       | 4.8   | 5.0   | 5.0 | 5.0  | 5.0  | 5.0 | 5.0  | 5.0 | <b>5.0</b> |
| 20%                       | 5.0   | 5.0   | 5.0 | 5.0  | 5.0  | 5.0 | 5.0  | 5.0 | <b>5.0</b> |
| <b>Disease Resistance</b> |       |       |     |      |      |     |      |     |            |
| 80%                       | 5.0   | 5.0   | 5.0 | 5.0  | 5.0  | 5.0 | 5.0  | 5.0 | <b>5.0</b> |
| 60%                       | 5.0   | 4.8   | 4.5 | 5.0  | 5.0  | 5.0 | 5.0  | 5.0 | <b>4.9</b> |
| 40%                       | 4.8   | 5.0   | 5.0 | 5.0  | 5.0  | 5.0 | 5.0  | 5.0 | <b>5.0</b> |
| 20%                       | 5.0   | 5.0   | 5.0 | 5.0  | 5.0  | 5.0 | 5.0  | 5.0 | <b>5.0</b> |
| <b>Vigor</b>              |       |       |     |      |      |     |      |     |            |
| 80%                       | 4.4   | 5.0   | 5.0 | 5.0  | 4.4  | 4.0 | 4.2  | 4.0 | <b>4.5</b> |
| 60%                       | 3.3   | 4.0   | 3.8 | 4.5  | 4.5  | 4.5 | 4.3  | 4.0 | <b>4.1</b> |
| 40%                       | 4.8   | 4.8   | 4.8 | 5.0  | 5.0  | 4.8 | 5.0  | 4.8 | <b>4.8</b> |
| 20%                       | 4.4   | 5.0   | 4.8 | 5.0  | 5.0  | 4.6 | 4.0  | 4.2 | <b>4.6</b> |
| <b>Overall Appearance</b> |       |       |     |      |      |     |      |     |            |
| 80%                       | 3.2   | 4.4   | 4.5 | 4.8  | 4.6  | 3.4 | 3.8  | 4.1 | <b>4.1</b> |
| 60%                       | 2.8   | 3.8   | 3.6 | 4.3  | 4.5  | 4.0 | 3.5  | 3.5 | <b>3.7</b> |
| 40%                       | 3.0   | 4.1   | 4.3 | 5.0  | 5.0  | 4.3 | 4.0  | 4.8 | <b>4.3</b> |
| 20%                       | 3.4   | 4.3   | 4.4 | 4.6  | 4.8  | 4.2 | 3.6  | 4.3 | <b>4.2</b> |

## PHOTOS, TABLES, AND FIGURES

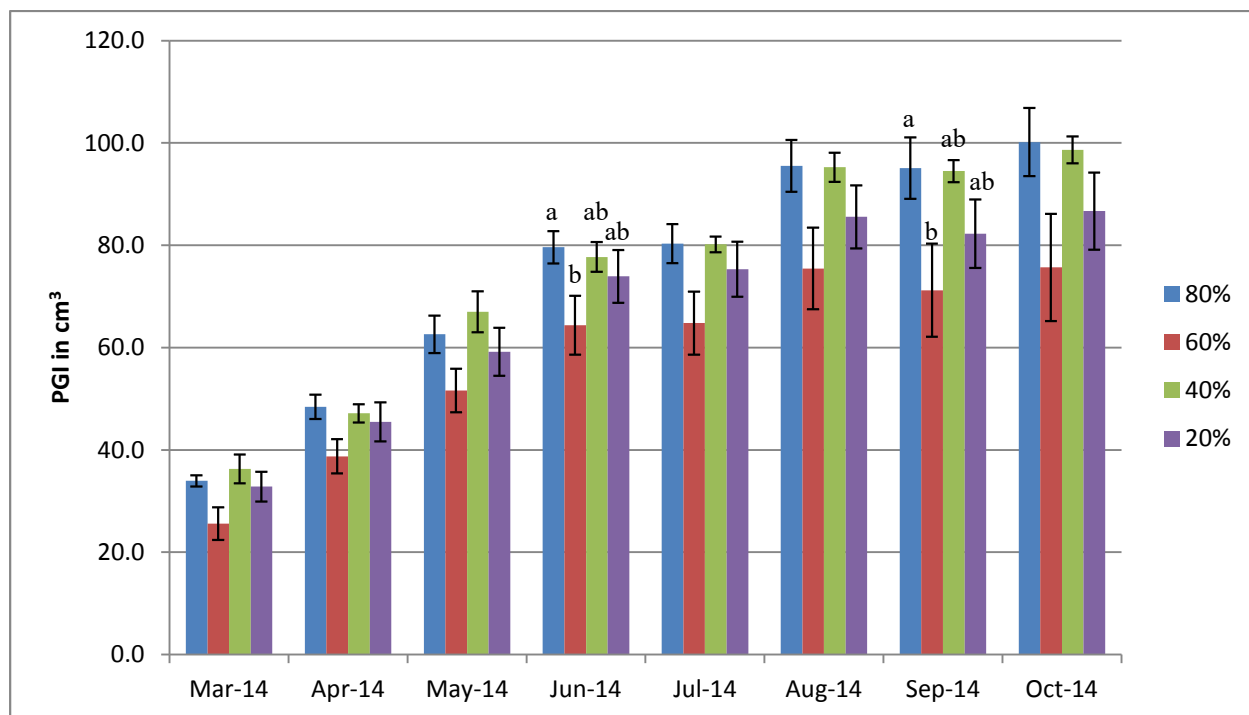


Figure 24a. Average monthly plant growth index of *Lomandra* 'Bushland Green' in 2014 on 4  $ET_0$ -based irrigation levels. Bars represent  $\pm 1$  SE. No significant differences using ANOVA and Tukey's HSD at  $p < 0.05$ , except for June and August, where bars with the same letters were not significantly different, and differences are probably reflective of original plant size and not necessarily the treatment.

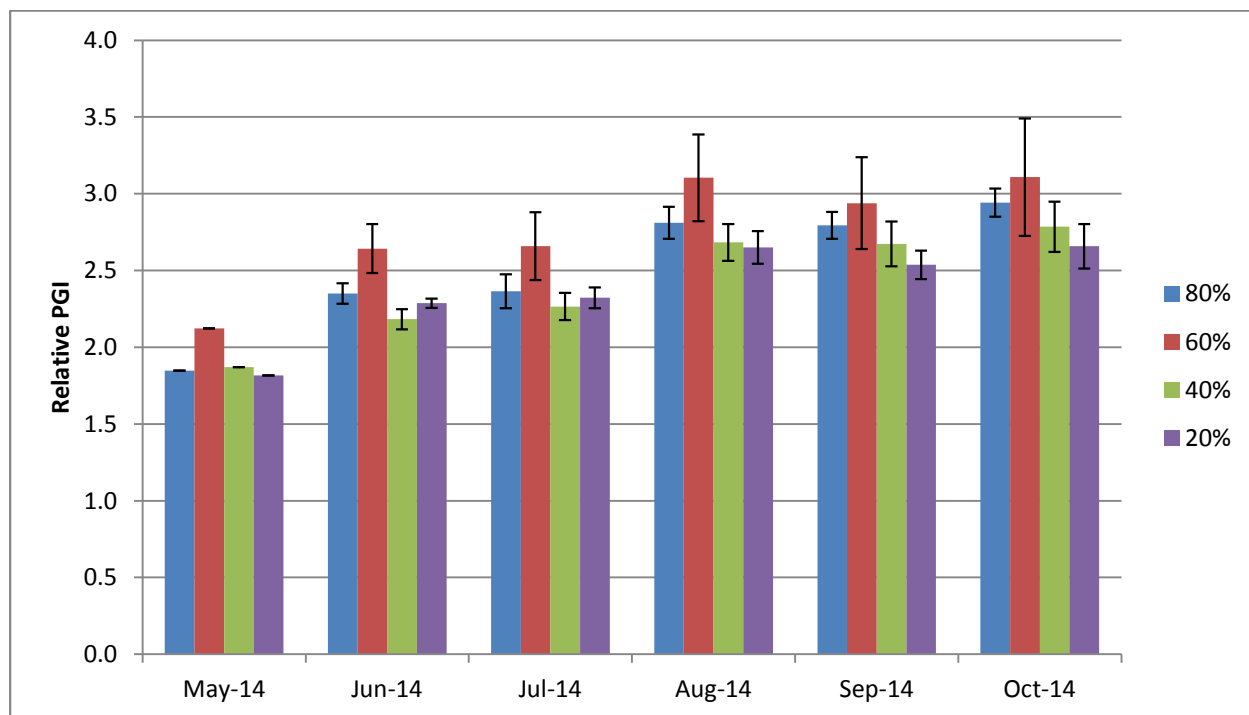


Figure 24b. Average monthly relative plant growth index of *Lomandra* 'Bushland Green' in 2014 on 4  $ET_0$ -based irrigation levels. Bars represent  $\pm 1$  SE. No significant differences using ANOVA and Tukey's HSD at  $p < 0.05$ .