

DATA 2018

Table 20a. *Westringia fruticose* 'NFL25' average monthly quality ratings (scale of 1-5) on 3 ETo-based irrigation levels during 2018.

Category	ETo%	May	Jun	Jul	Aug	Sep	Oct	AVG
Overall Appearance	80	3.5	3.6	3.4	3.7	3.9	4.1	3.7
	50	3.3	3.2	3.8	3.7	3.8	3.8	3.6
	20	3.4	3.6	3.6	3.9	3.7	3.9	3.7
Foliage	80	3.7	4.0	3.9	4.1	4.6	4.6	4.1
	50	3.7	4.0	4.7	4.3	4.3	4.5	4.3
	20	3.6	4.0	4.0	4.3	4.6	4.4	4.1
Flower	80							
	50							
	20							
Pest Resistance	80	5.0	5.0	5.0	5.0	5.0	5.0	5.0
	50	5.0	5.0	5.0	5.0	5.0	5.0	5.0
	20	5.0	5.0	5.0	5.0	5.0	5.0	5.0
Disease Resistance	80	5.0	5.0	5.0	5.0	5.0	5.0	5.0
	50	5.0	5.0	5.0	5.0	4.8	5.0	5.0
	20	5.0	5.0	5.0	5.0	5.0	5.0	5.0
Vigor	80	4.3	4.7	4.7	4.9	5.0	5.0 ^a	4.8 ^a
	50	3.8	3.8	4.0	4.0	4.2	3.8 ^b	3.9 ^b
	20	3.9	4.4	4.1	4.1	4.4	4.3 ^{ab}	4.2 ^{ab}

Ratings with different superscripts are significantly different using ANOVA and Tukey's Post-Hoc, $p \leq .05$.

Table 20b. Open House participant ratings for *Westringia fruticose* 'NFL25' on 3 ETo-based irrigation treatments in May, July, and September 2018.

		May			July			September		
	ETo %	80	50	20	80	50	20	80	50	20
Overall Appearance	Max	5	5	5	5	5	5	5	5	5
	Mean	2.8	3.5	3.3	3.4	4.5	4.4	4.0	4.6	4.1
	Median	3	4	3	3	5	4	4	5	4
	Min	1	2	2	2	3	3	2	3	2
Foliage Quality	Max	4	5	5	5	5	5	5	5	5
	Mean	3.0	3.8	3.4	3.6	4.8	4.5	4.1	4.7	4.4
	Median	3	4	3	4	5	5	4	5	4
	Min	2	2	2	2	4	3	2	4	2
Floral Display	Max	0	3	1	0	1	1	4	1	1
	Mean	0.0	0.1	0.0	0.0	0.1	0.0	0.0	0.0	0.0
	Median	0	0	0	0	0	0	0	0	0
	Min	0	0	0	0	0	0	0	0	0

DATA 2018

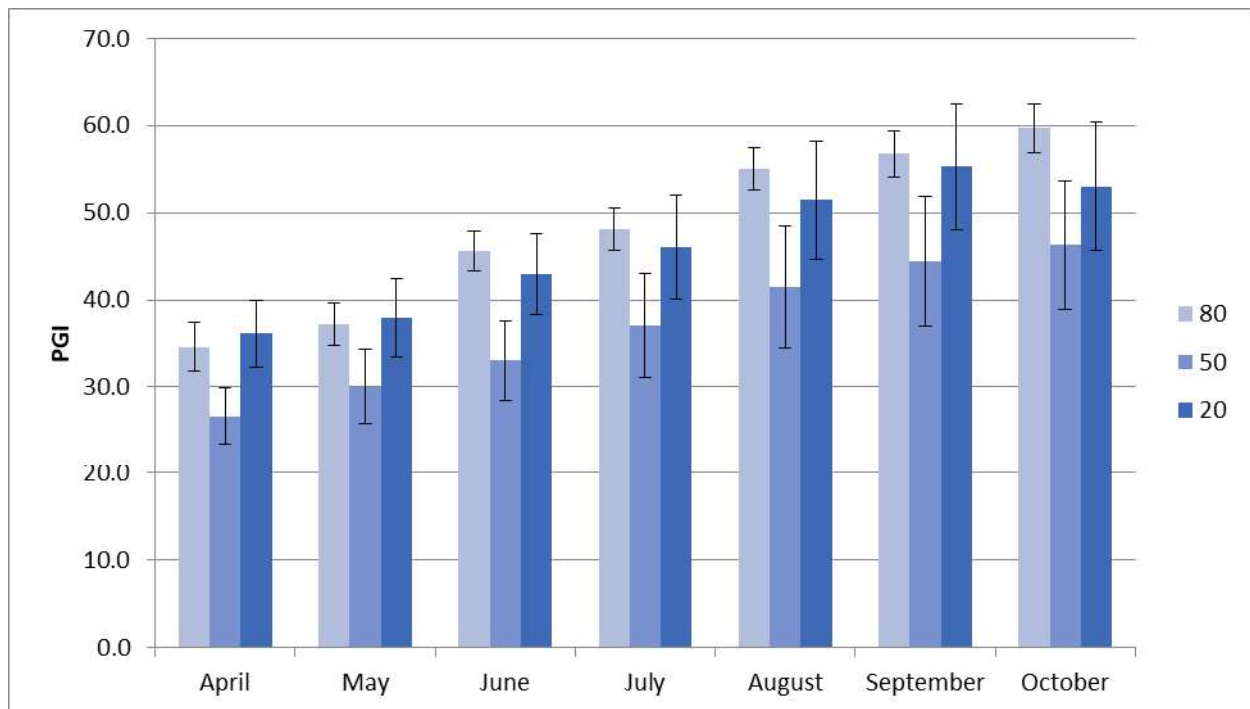


Figure 14a. *Westringia fruticose* 'NFL25' average monthly plant growth index on 3 ETo-based irrigation treatments in 2018. Bars represent ± 1 SE. There were no significant differences between treatments.

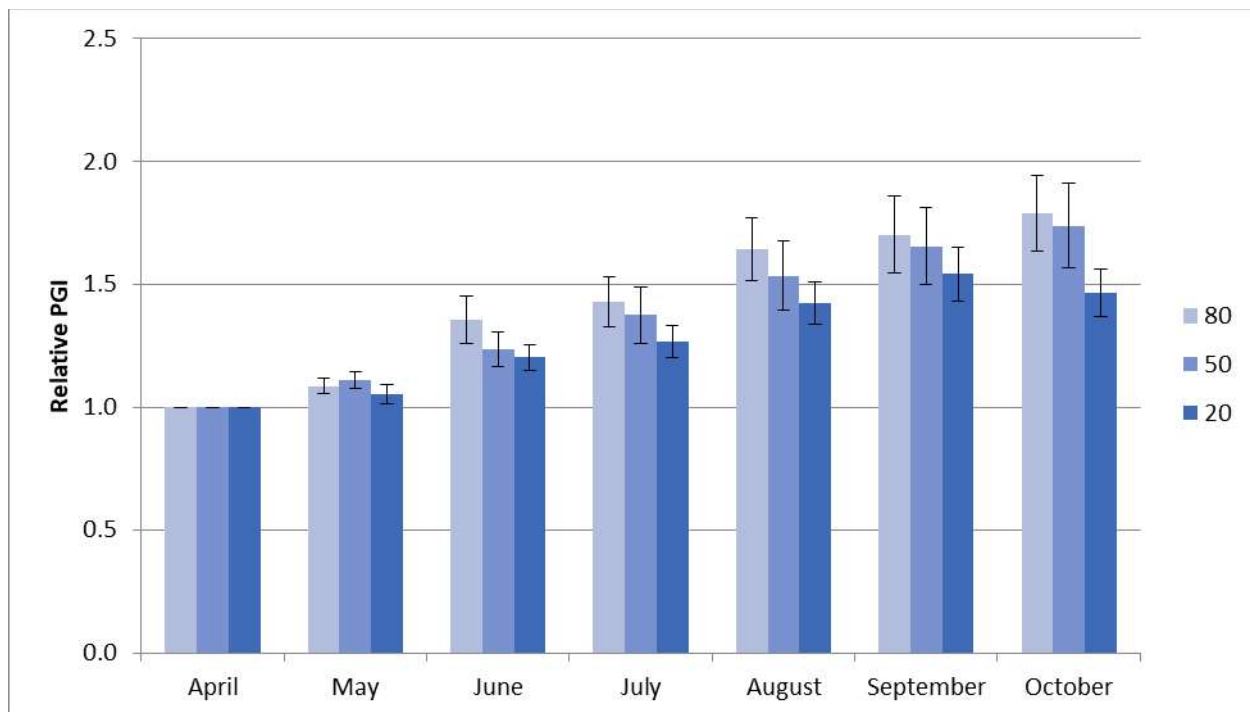


Figure 14a. *Westringia fruticose* 'NFL25' average monthly relative plant growth index on 3 ETo-based irrigation treatments in 2018. Bars represent ± 1 SE. There were no significant differences between treatments.