

Table 19. *Mahonia* 'Soft Caress' average monthly quality ratings on 4 ET<sub>0</sub>-based irrigation treatments in 2016. (April data unavailable.) Different superscripts denote significant differences using ANOVA and Tukey's HSD at  $p \leq 0.05$ . Red superscripts denote significance at  $p \leq 0.01$

| <b>Foliage</b>            | <b>May</b> | <b>June</b> | <b>July</b>       | <b>Aug</b> | <b>Sept</b>       | <b>Oct</b>        | <b>AVG</b> |
|---------------------------|------------|-------------|-------------------|------------|-------------------|-------------------|------------|
| 80%                       | 3.6        | 3.5         | 4.2               | 4.7        | 3.8               | 4.0               | 4.0        |
| 60%                       | 3.7        | 4.2         | 4.0               | 4.8        | 4.7               | 4.2               | 4.3        |
| 40%                       | 4.3        | 4.2         | 4.4               | 4.8        | 4.2               | 4.5               | 4.4        |
| 20%                       | 3.9        | 3.8         | 4.3               | 4.3        | 4.3               | 3.8               | 4.1        |
| <b>Flowering</b>          |            |             |                   |            |                   |                   |            |
| 80%                       |            | 1.0         |                   |            |                   | 1.0               | 1.0        |
| 60%                       |            |             |                   |            |                   | 1.5               | 1.5        |
| 40%                       |            |             |                   |            |                   | 1.0               | 1.0        |
| 20%                       |            | 1.0         |                   |            |                   | 1.0               | 1.0        |
| <b>Pest Tolerance</b>     |            |             |                   |            |                   |                   |            |
| 80%                       | 5.0        | 5.0         | 5.0               | 5.0        | 5.0               | 5.0               | 5.0        |
| 60%                       | 5.0        | 5.0         | 5.0               | 5.0        | 5.0               | 5.0               | 5.0        |
| 40%                       | 5.0        | 5.0         | 5.0               | 5.0        | 5.0               | 5.0               | 5.0        |
| 20%                       | 5.0        | 5.0         | 5.0               | 5.0        | 5.0               | 5.0               | 5.0        |
| <b>Disease Resistance</b> |            |             |                   |            |                   |                   |            |
| 80%                       | 5.0        | 5.0         | 5.0               | 5.0        | 5.0               | 5.0               | 5.0        |
| 60%                       | 5.0        | 5.0         | 5.0               | 5.0        | 5.0               | 5.0               | 5.0        |
| 40%                       | 5.0        | 5.0         | 5.0               | 5.0        | 5.0               | 5.0               | 5.0        |
| 20%                       | 5.0        | 5.0         | 5.0               | 5.0        | 5.0               | 5.0               | 5.0        |
| <b>Vigor</b>              |            |             |                   |            |                   |                   |            |
| 80%                       | 3.6        | 3.5         | 4.0 <sup>ab</sup> | 3.7        | 3.8               | 3.4 <sup>b</sup>  | 3.7        |
| 60%                       | 4.0        | 3.3         | 5.0 <sup>a</sup>  | 4.3        | 3.8               | 4.5 <sup>a</sup>  | 4.2        |
| 40%                       | 3.7        | 3.7         | 4.0 <sup>ab</sup> | 3.7        | 3.0               | 3.7 <sup>ab</sup> | 3.6        |
| 20%                       | 4.3        | 3.2         | 3.7 <sup>b</sup>  | 3.7        | 3.3               | 3.7 <sup>ab</sup> | 3.6        |
| <b>Overall Appearance</b> |            |             |                   |            |                   |                   |            |
| 80%                       | 3.2        | 3.2         | 3.5               | 3.7        | 3.0 <sup>b</sup>  | 3.8               | 3.4        |
| 60%                       | 3.5        | 3.0         | 4.5               | 4.3        | 3.9 <sup>a</sup>  | 4.3               | 3.9        |
| 40%                       | 3.5        | 3.5         | 3.8               | 3.7        | 3.1 <sup>b</sup>  | 3.3               | 3.5        |
| 20%                       | 3.5        | 3.2         | 3.8               | 4.0        | 3.4 <sup>ab</sup> | 3.5               | 3.6        |

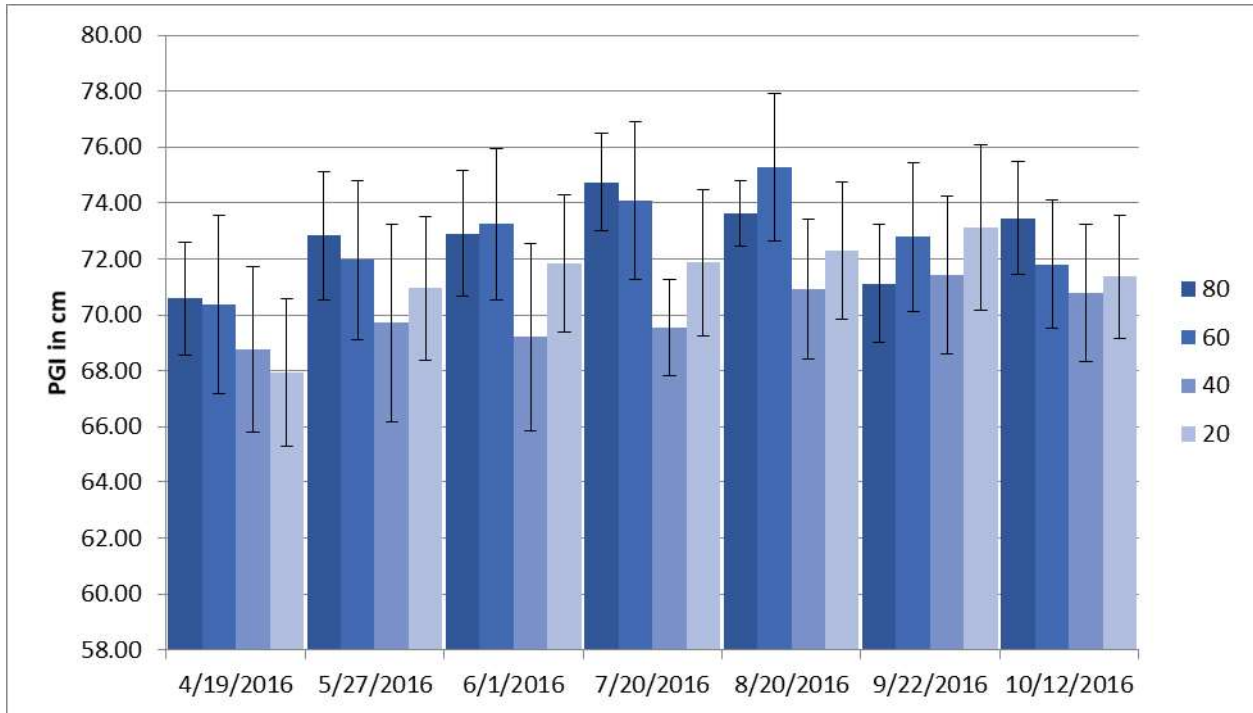


Figure 16g. *Mahonia* 'Soft Caress' average monthly plant growth index on 4 ET<sub>0</sub>-based irrigation treatments in 2016. Bars represent ±1 SE.

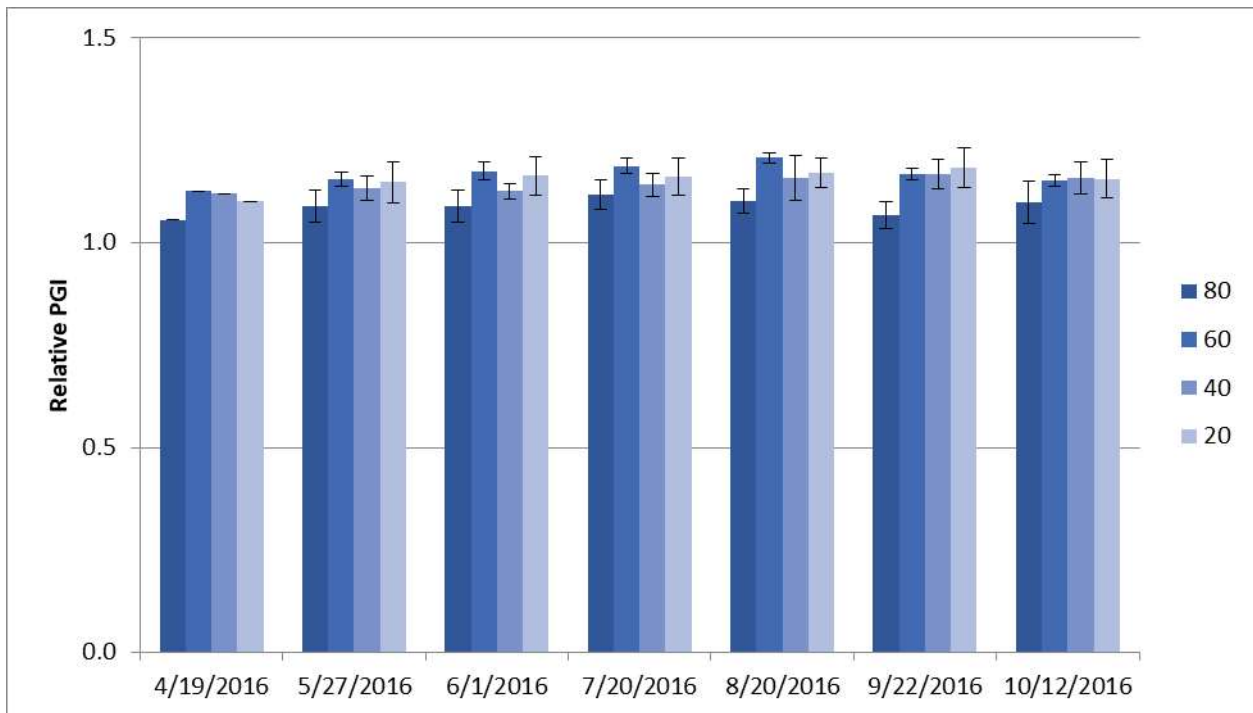


Figure 16g. *Mahonia* 'Soft Caress' average monthly plant growth index on 4 ET<sub>0</sub>-based irrigation treatments in 2016. Bars represent ±1 SE. There were no significant differences between treatments.