

Fire Forward and the Good Fire Alliance



AUDUBON CANYON RANCH

FIRE FORWARD

Building Ecosystem Resilience Together

Jared Childress, Prescribed Fire Specialist

ACR's Fire Forward



What do these “Firestorms” mean?

Is it Climate Change and the “New Normal”
Or something else?

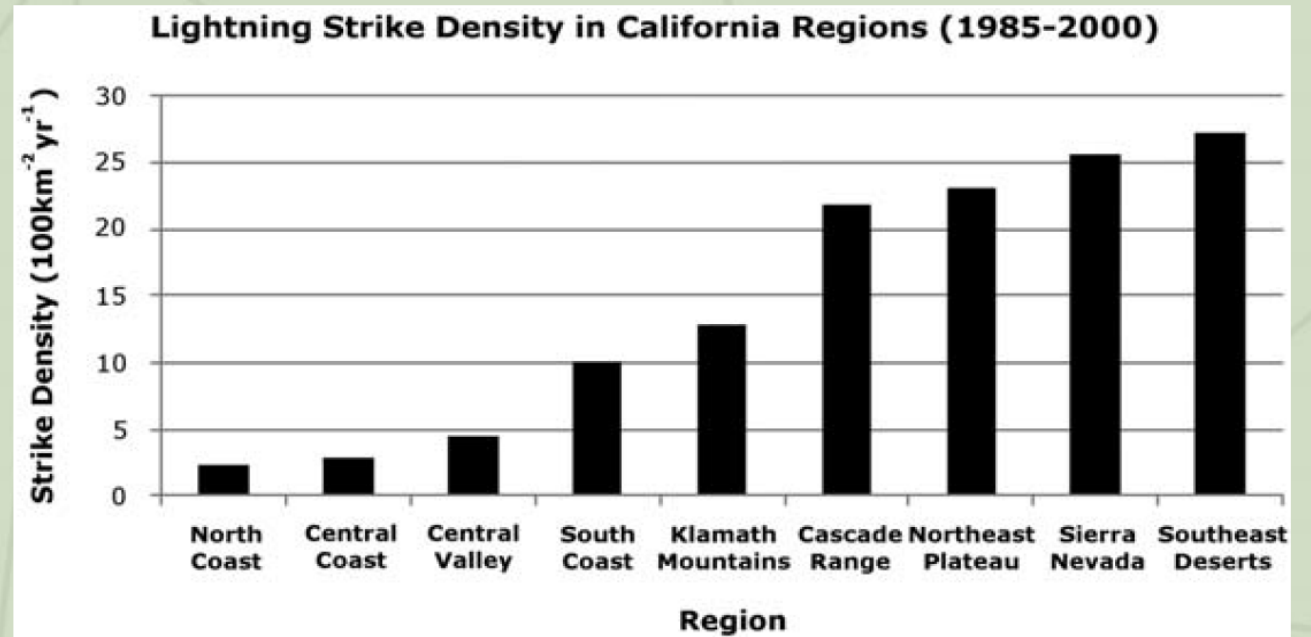
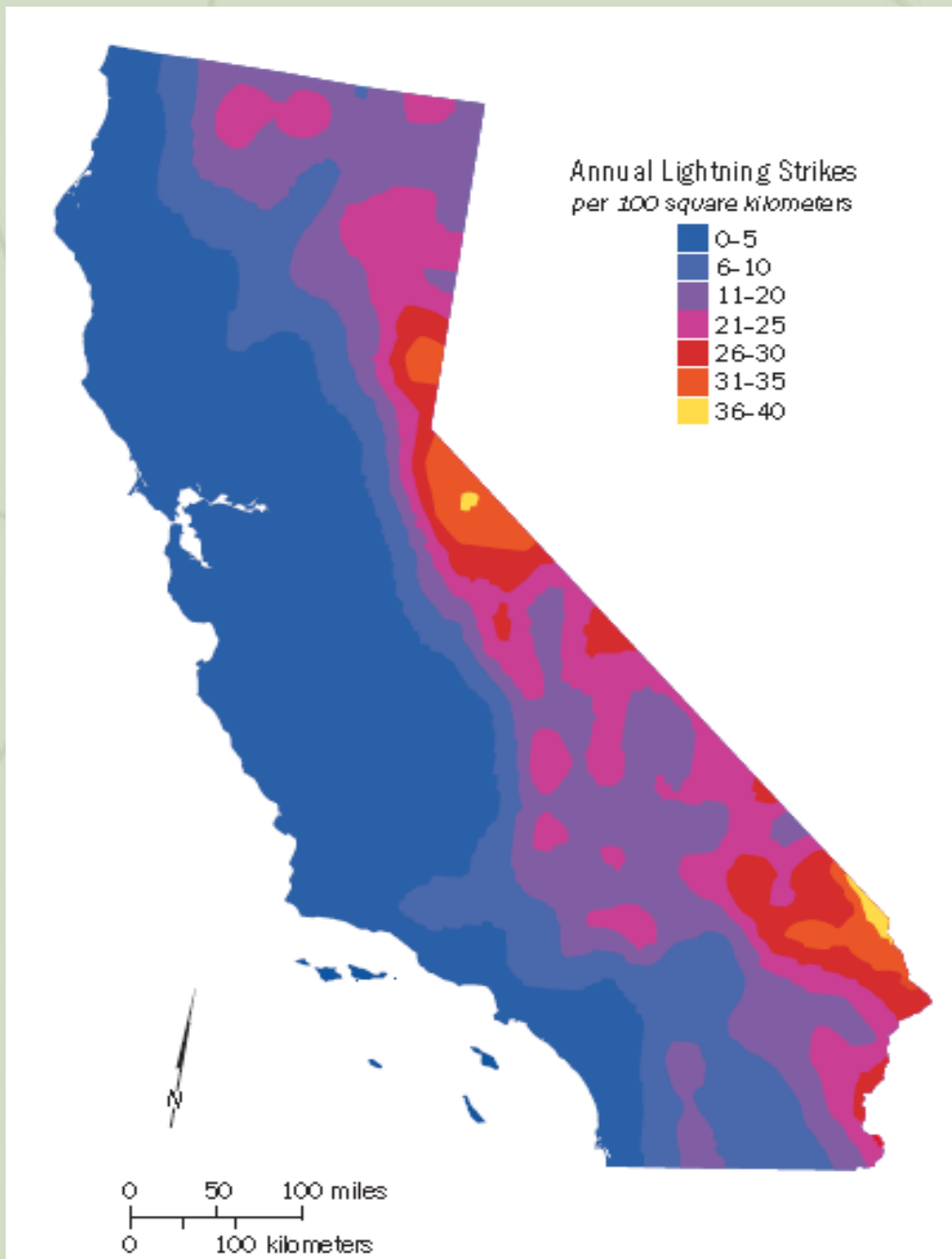


A history of fire

Prehistoric fire area and emissions from California's forests, woodlands, shrublands, and grasslands

Stephens et al. 2007. *Forest Ecology and Management*, 251(3), 205-216.

“Approximately 1.8 million ha burned annually in California prehistorically (pre 1800). Our estimate of prehistoric annual area burned in California is 88% of the total annual wildfire area in the entire US during a decade (1994–2004) characterized as “extreme” regarding wildfires. The idea that US wildfire area of approximately two million ha annually is extreme is certainly a 20th or 21st century perspective. Skies were likely smoky much of the summer and fall in California during the prehistoric period. Increasing the spatial extent of fire in California is an important management objective.”



Cuthrell, Rob Q., et al. "A land of fire: Anthropogenic burning on the central coast of California." *Contemporary issues in California archaeology* (2012): 153-172.

“Impacts of Native American burning [were] highest near larger population centers in Coastal California and the Central Valley where lighting ignitions were rare (Keeley, 1982, 2002, 2005; Stephens and Libby, 2005).”

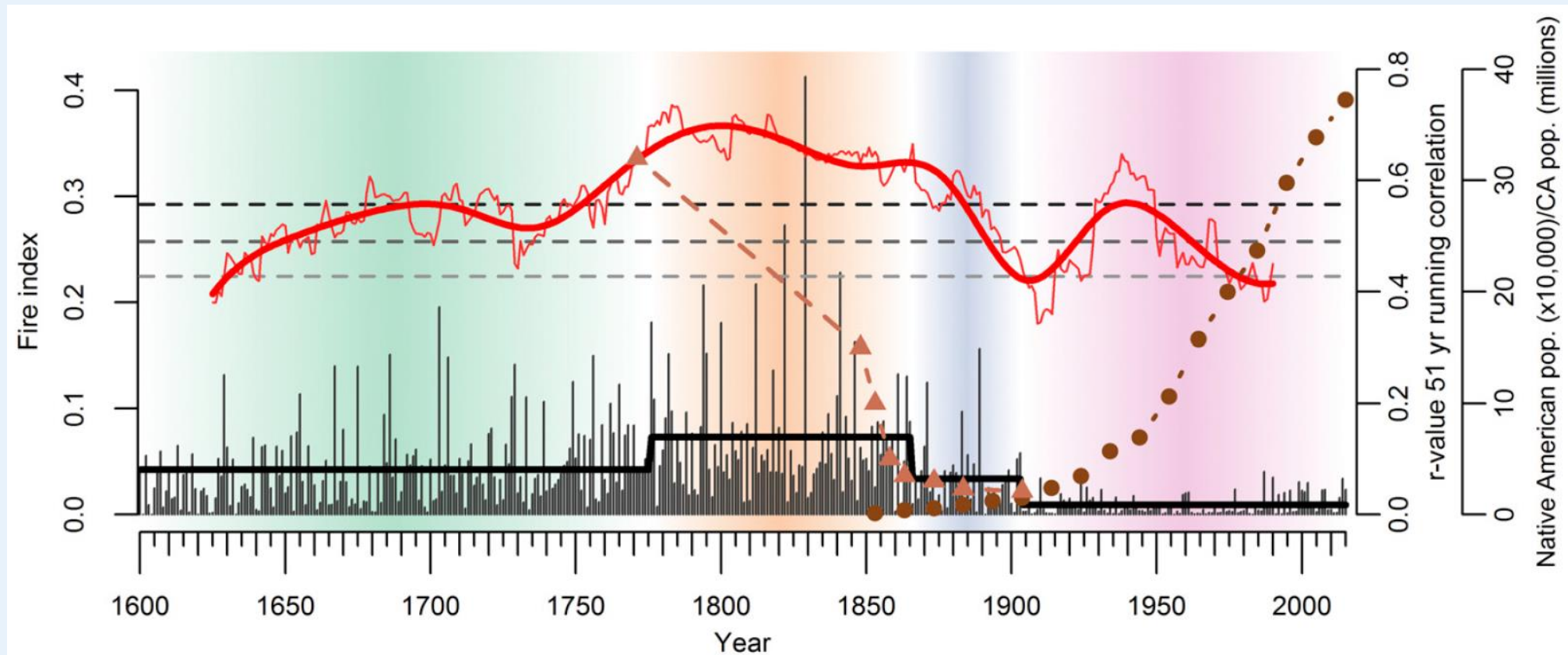


Fig. 3. Variation in strength of fire–moisture (60) relationships (i.e., PDSI) and population size of Native Americans (16) (triangle) and others (19) (circles) in California. The fire regime periods are indicated by shading as in Fig. 2. The r -values are 51-y running Pearson product-moment correlation coefficients of PDSI (inverted for presentation) and fire index is plotted on the 26th year of the window. Statistical significance ($P < 0.05$, $P < 0.01$, $P < 0.001$) is shown by increasingly dark dashed lines.

(Taylor et al. 2016. Sociological transitions trigger fire regime shifts and modulate fire)

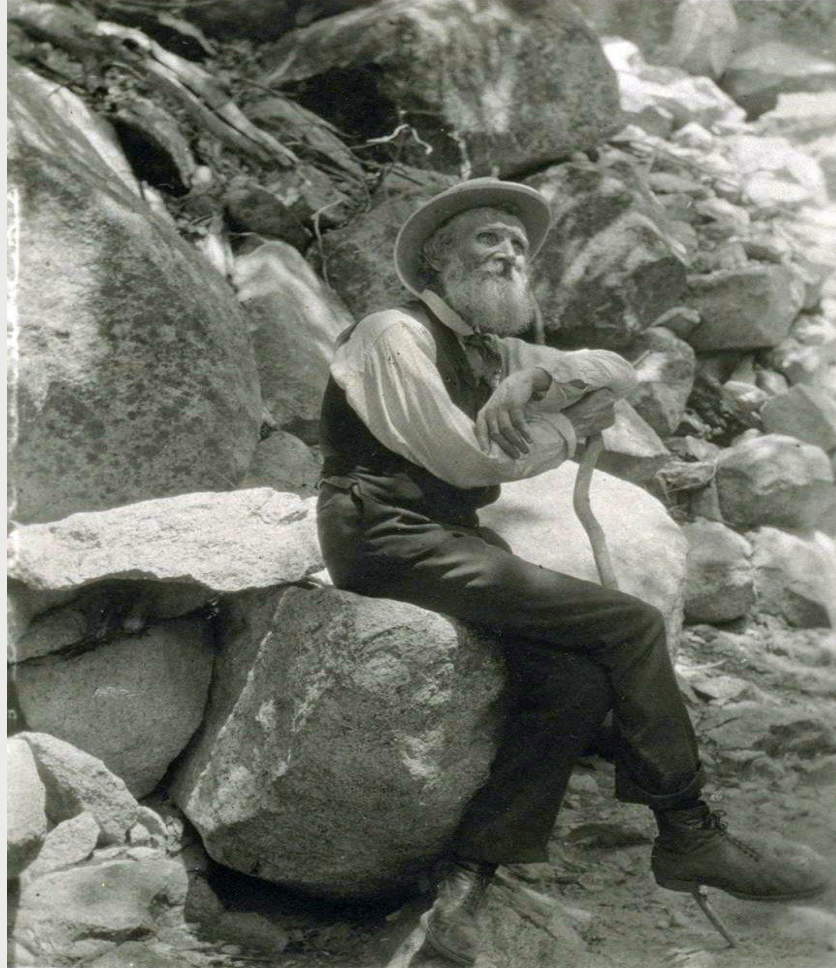
Fire Return Intervals (FRI) for Regionally Present Communities

Plant Community	Median FRI	High FRI
Black Oak	2	8
Oak Woodlands	2	11
Fescue Oatgrass	3	8
Coastal Sagebrush/Woodland	5	20
Redwood	10	30
Mixed Evergreen	10	30
Riparian Corridors	13	47
Coastal Sagebrush	20	40
Chaparral	30	70

(Taylor and Skinner 2003, Skinner and Chang 1996, Everett 2008, Stephens et al 2007 and many more)

John Muir and early environmentalism.

A product of colonization.



First Yosemite trip: 1868
Mariposa Battalion: 1850

AUDUBON CANNON RANCH

sacr

conservation in action



Martin Griffin Preserve Post WWII



MGP bought in 1965



MGP 1993

Legend

Google Earth

Image U.S. Geological Survey

2000 ft



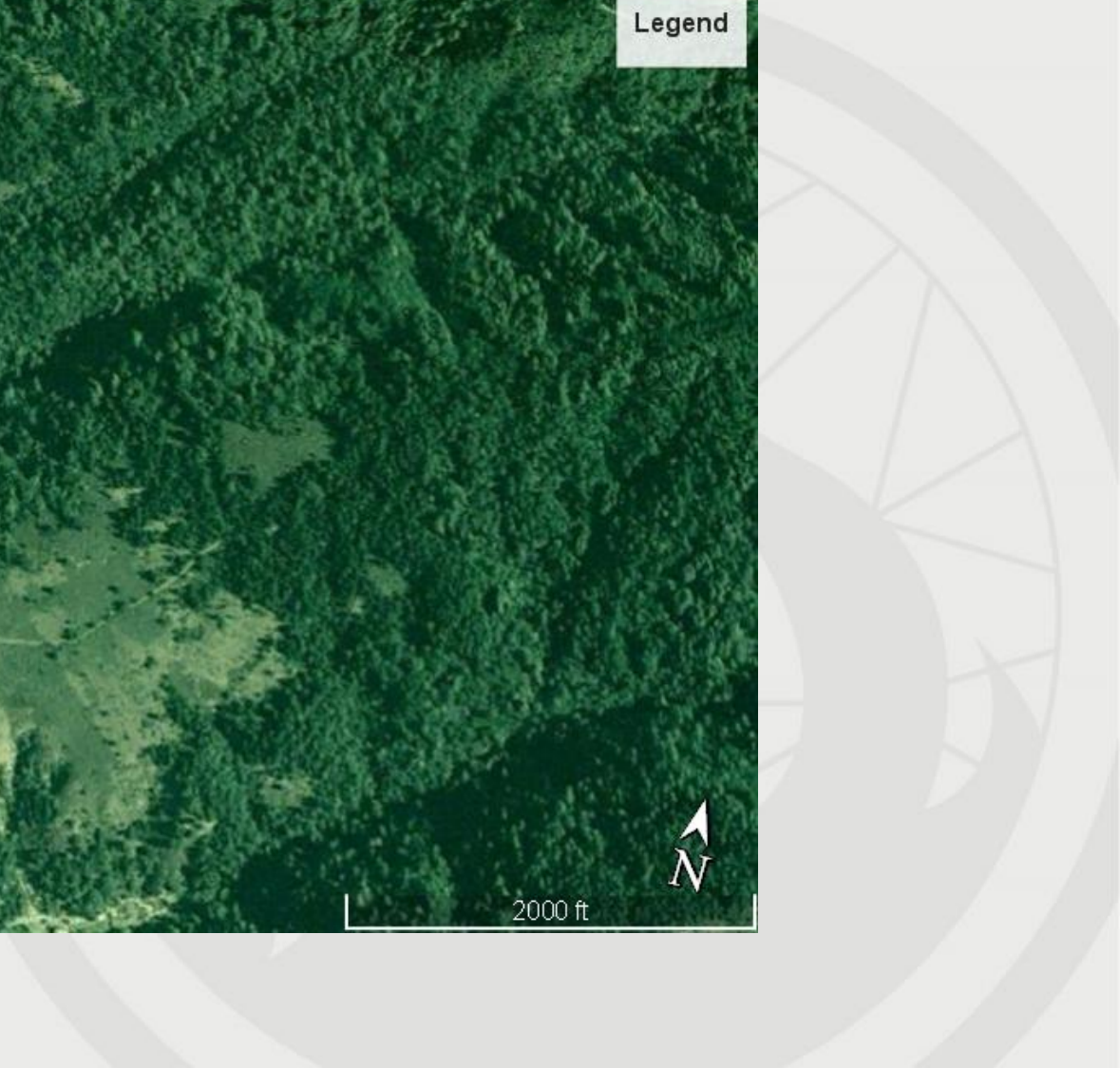
MGP 2004

Legend

Google Earth

Image USDA Farm Service Agency

2000 ft



MGP 2010

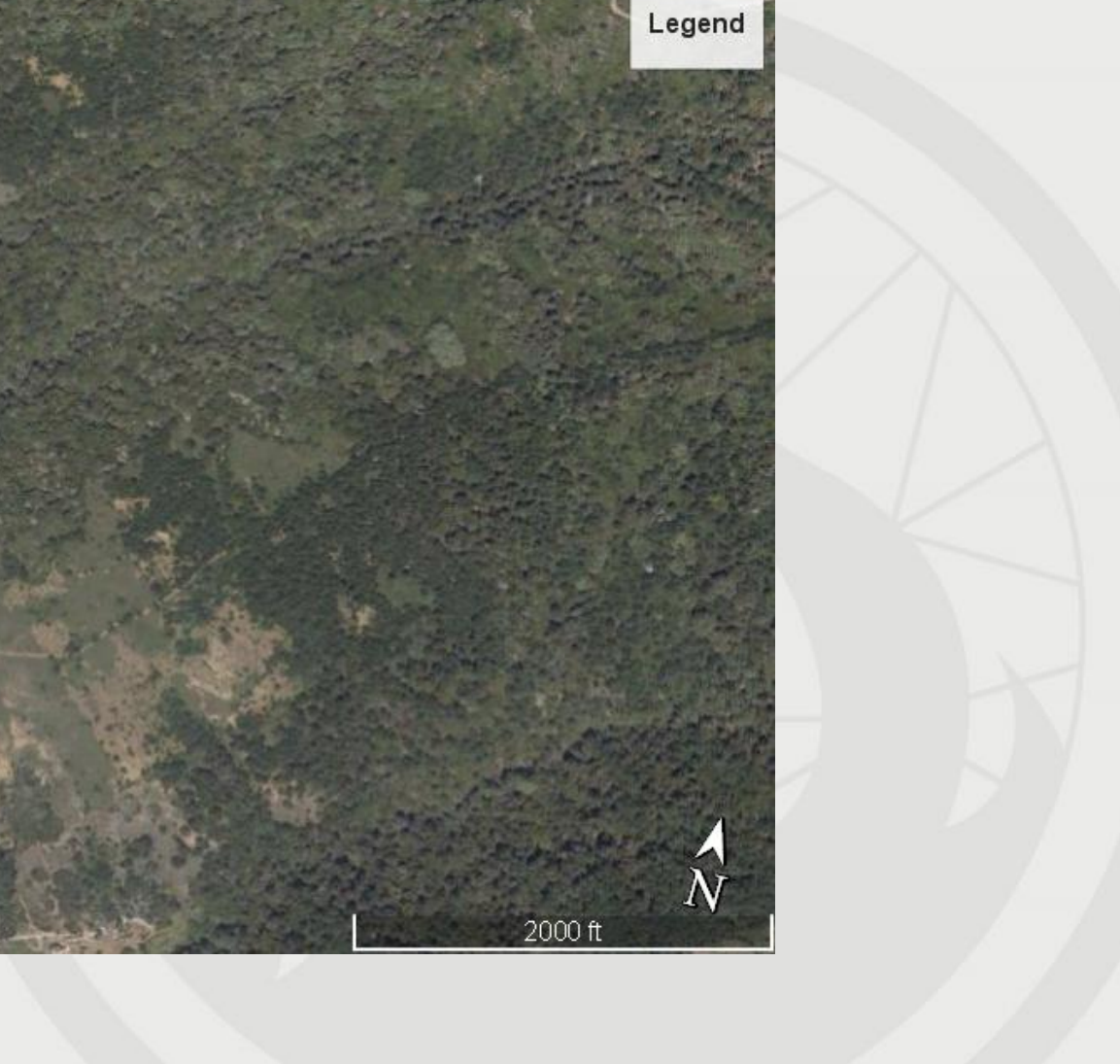
Legend

Google Earth

Image USDA Farm Service Agency



2000 ft

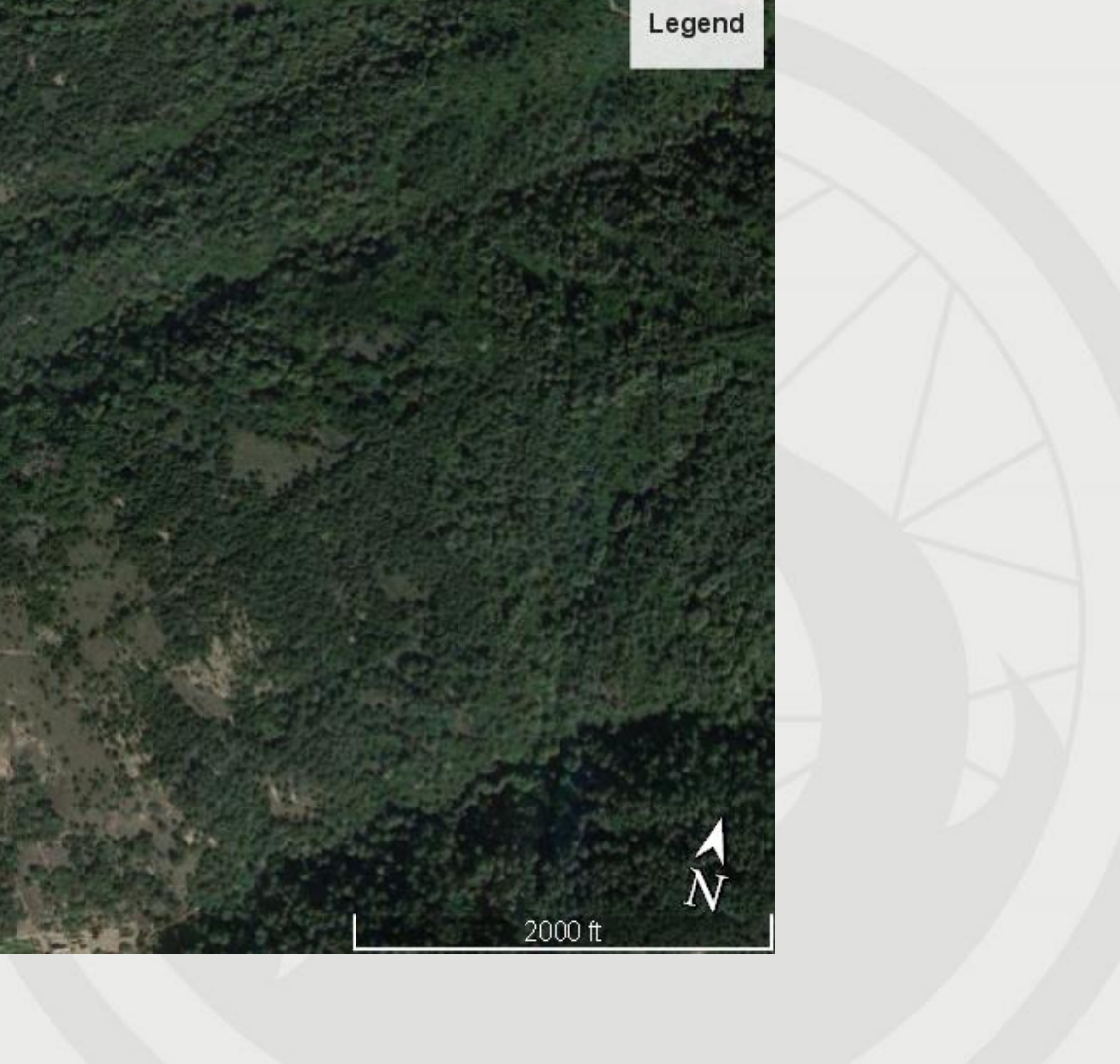


MGP 2018

Legend

Google Earth

2000 ft





Bouverie 2017 Planned Burn Units and Vicinity

Legend

-  View Trail Unit
-  Upper Pasture Unit
-  Dirt Road/Trail
-  Bouverie Preserve Boundary

0 0.05 0.1 0.2 Miles

0 120 240 480 Yards





Nuns Fire



Fire Forward regional program:

▶ Organize Community

Teaming up with private landowners, public agencies, tribes and conservation partners around a shared purpose of effective fuel management.

▶ Develop Capacity

Building our region's capacity to accomplish this work through prescribed fire training and equipment sharing.

▶ Implementation

Working with partners to implement ecologically sound fire and fuels treatments on ACR preserves and partners' lands.



A group of approximately 20-25 people are seated in a circle in a room, engaged in a community organizing session. The room has a curved wall on the left with large windows covered by curtains. In the background, there is a whiteboard and a projector screen. The lighting is dim, with circular recessed lights on the ceiling. The text "Community Organizing" is overlaid in the center of the image.

Community Organizing

Teaming up with private landowners, public agencies, tribes and conservation partners around a shared purpose of effective fuel management

The Good Fire Alliance

Cooperative Burning

Grazing for fuel reduction

**Thinning and
shaded fuel breaks**



Bay Area Prescribed Fire Council (B.A.R x.F)



Cal Fire
Sonoma County Parks
UC Berkeley
Amah Mutsun Tribe
State Parks
Sonoma Ecology Center
Marin County Fire
SF PUC
Jenner Headlands Preserve
EBMUD
UC Cooperative Extension
Marin Water
Golden Gate NP Conservancy
Pepperwood
Moraga Orinda Fire Department
EB Parks
Mid-Pen Open Space
CA Fire Science Consortium
Bay Area Air Quality-
Management District

**Bay Area Prescribed Fire Council's
Spring Meeting 2020:
Burning in the Fog**



**Conference Wednesday March 25th
Field tour Thursday March 26th
Stinson Beach, CA**

Bay TREX 2020

(Training Exchange)



A group of firefighters in yellow gear are gathered around a yellow fire truck in a field. A man in a grey shirt with "YACAMAS FIRE DEPARTMENT" on the back is in the foreground. The truck has "CAL FIRE" on the back of a person on it and "KENNETH FIRE DISTRICT" on the side. The scene is outdoors with trees in the background.

Capacity Development

Building our region's capacity to accomplish this work through prescribed fire training and equipment sharing

Training and Workshops

Audubon Canyon Ranch's Fire Forward program

Presents:

Coalesce:

A Basic Wildland Fire Fighter Training Festival

For Prescribed Fire Practitioners

Sat. May 16th

Food provided

\$150.00

(Scholarships available)

Bouverie Preserve

Glen Ellen,

Sonoma County

Online pre-course work necessary

Register at:

<https://bit.ly/2OeFAU1>

AUDUBON CANYON RANCH
acr
conservation in action

Truck and Fire Trailer/ Cache



A photograph of a forest fire. In the foreground, two firefighters in yellow gear and helmets are visible on the left. The ground is covered in flames and smoke. The background is filled with tall, thin trees, some of which are partially obscured by the smoke and fire. The sky is a pale blue-grey color.

Implantation

Working with partners to implement ecologically sound fire and fuels treatments on ACR preserves and partners' lands

Thinning



Cooperative Rx Burning on



ACR Lands
Private Lands
Partner Organizations

MGP Preserve 2019



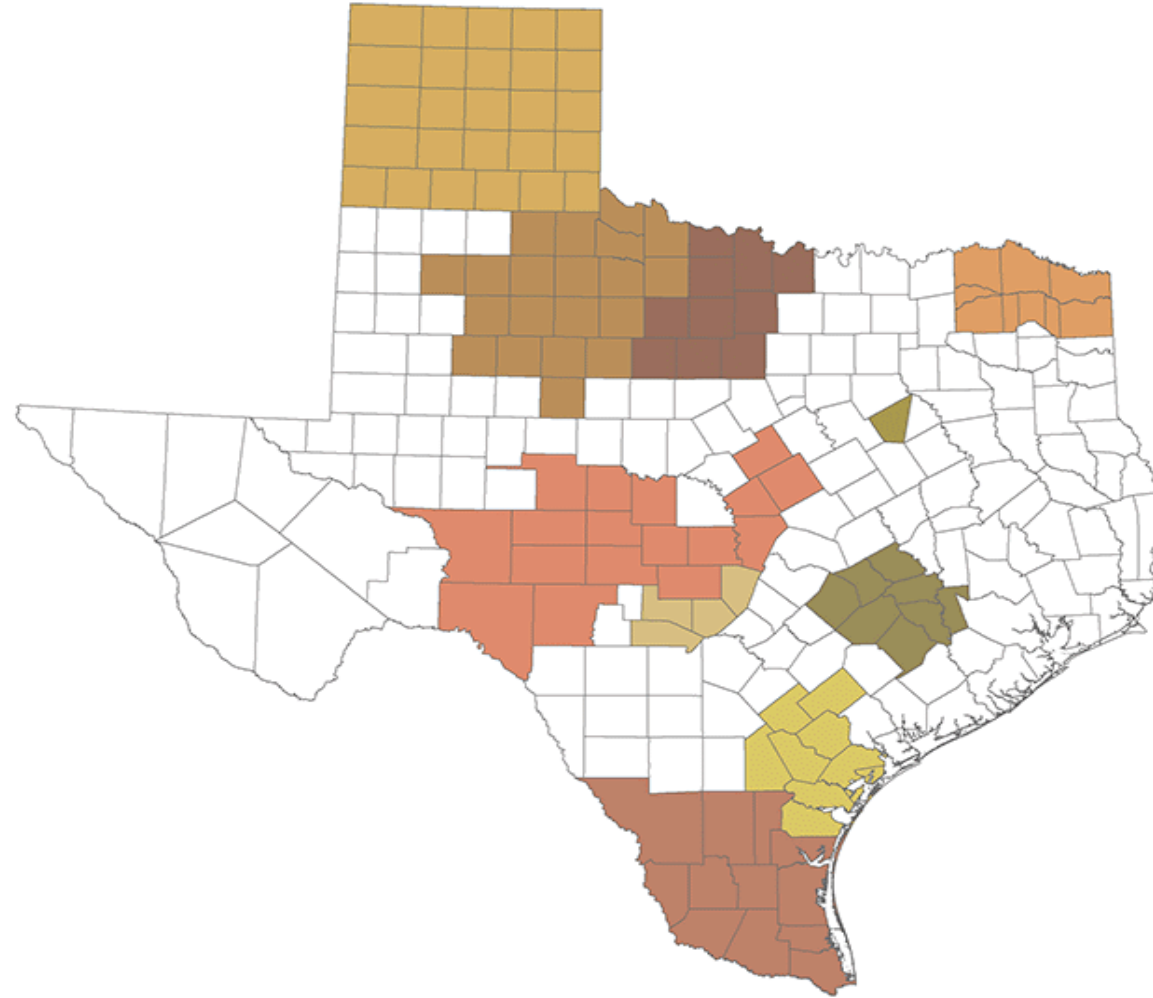


What are PBAs?

Rx Burning from the bottom up.



Counties in each Prescribed Burn Association



- | | |
|--|---|
|  Coastal Bend Prescribed Burn Association |  South Central Texas Prescribed Burn Association |
|  Edwards Plateau Prescribed Burning Association, Inc. |  South Texas Prescribed Burn Association |
|  Hill Country Prescribed Burning Association |  Southern Rolling Plains Prescribed Burn Association |
|  North Central Texas Prescribed Burn Association |  Texas Panhandle Prescribed Burn Association |
|  Northeast Texas Prescribed Fire Initiative |  Western Navarre Bobwhite Recovery Initiative |

Humboldt PBA



So what is the Good Fire Alliance then?





PPE, Training and the M.O.A.



Targeted Grazing and Home Hardening



Burning Questions?

Fire Forward is funded in part by:

- ▶ Farley Family Charitable Foundation
- ▶ Federated Indians of Graton Rancheria
- ▶ California Forest Improvement Program
- ▶ Cal Fire

and many generous members and supporters of ACR.

We welcome your involvement

- ▶ Become an ACR member
- ▶ Join the Good Fire Alliance
- ▶ Share @AudubonCanyonRanch
- ▶ Jared.Childress@egret.org

[LEARN MORE > www.egret.org](http://www.egret.org)

