

# Our Vision



To get involved in the Yosemite Village Permaculture Garden, contact Fresno Metro Ministry at:

Phone: 559-485-1416

Email: [chris@fresnetmin.org](mailto:chris@fresnetmin.org)  
or [amber@fresnetmin.org](mailto:amber@fresnetmin.org)

4270 N. Blackstone Ave., Suite 212  
Fresno, CA 93726



The **Yosemite Village Permaculture Garden and Urban Farm** is an educational garden and small farm incubator located in South West Fresno, behind the Yosemite Village Apartments on California Avenue. The goal of the garden is to develop a model for a community-based food system by encouraging neighborhood based production, increasing access to fresh fruits and vegetables, and supporting an entrepreneurial food based economy.

By utilizing a permaculture framework and incorporating non-mechanical, no-till growing techniques, growers will learn to produce a higher yield of food with less space and resources (land, water, finances). Incorporating a community-based food system in Southwest Fresno is important to create green open spaces, access points to healthy food, physical activity opportunities, job skills, and opportunities to contribute to the local economy.

This project is supported by the generous contributions of:

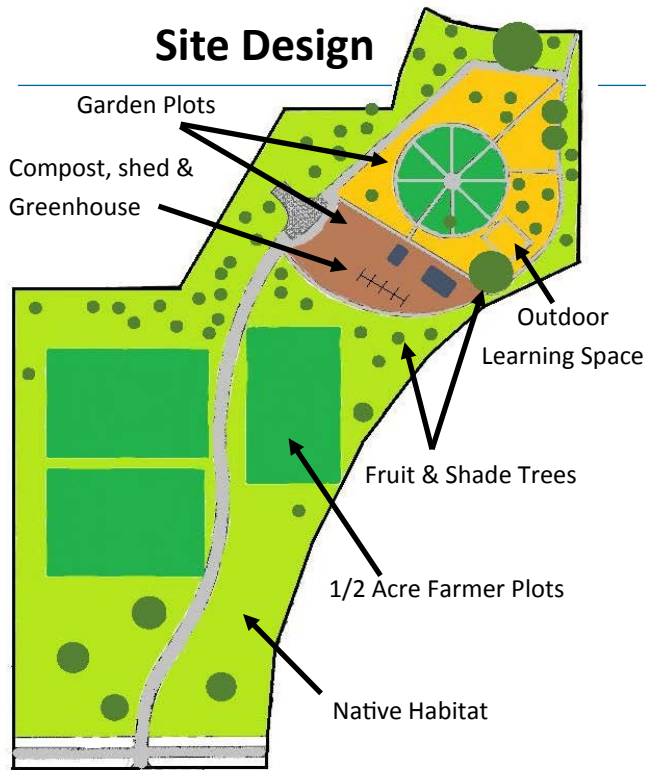


## YOSEMITE VILLAGE PERMACULTURE GARDEN AND URBAN FARM

*Growing More, With Less.*



The Central Valley's premier resource for urban agriculture and permaculture education.



## What is Permaculture and No-Till Farming?

Permaculture a method of growing food that integrates surrounding communities and natural ecosystems in order to create an efficient, healthy and restorative food system. No-till farming is a method of farming that involves little to no mechanization and prioritizes soil health to improve yield crop, increase biodiversity, decrease chemical pesticides usage and reduce water usage. This combination of techniques is perfect for urban gardens and farms, especially in the central valley.

## Site Features

**Community Garden Spaces**—Individual plots for community members.

**Greenhouse**—Learner operated seedling production for the farms and the general public.

**Small Farmer Incubator**—Kaiser model training plots for current and aspiring farmers.

**Community Permaculture Projects**—Design and build natural structures, manage native plants, and participate in composting.

**Education and Job Training**—Learn about permaculture, gardening, seed saving, pest management, irrigation systems, and more.

**Farm Stand**—Support the gardeners and farmers by buying fruits, vegetables, and seedlings grown at the garden.

**Walking Path**—Take advantage of the gardens beauty and get some exercise by walking the loop.

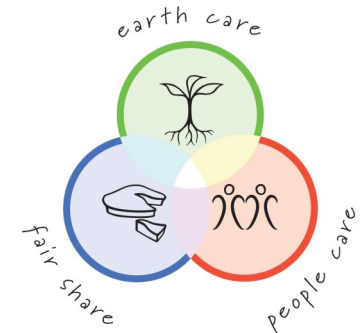
**Community Open Space**—Meet up with friends and neighbors for lunch, take a garden tour, or simply sit under a tree and relax.

## Get involved!

Metro has been working with community gardens for over a decade to reshape neighborhoods and improve the health of Fresno residents.

Help us build this great community resource and create a model to address healthy food access, improve resident resiliency, and build greener neighborhoods. Get involved and help us make this site possible!

- Exercise your landscaping skills by planting trees and hedgerows.
- Learn about irrigation and water conservation by helping us set up the drip system.
- Volunteer to teach classes about gardening.
- Become a donor!



If you or your group would like to get involved, please contact us! We can arrange for work groups/volunteer days and other opportunities!