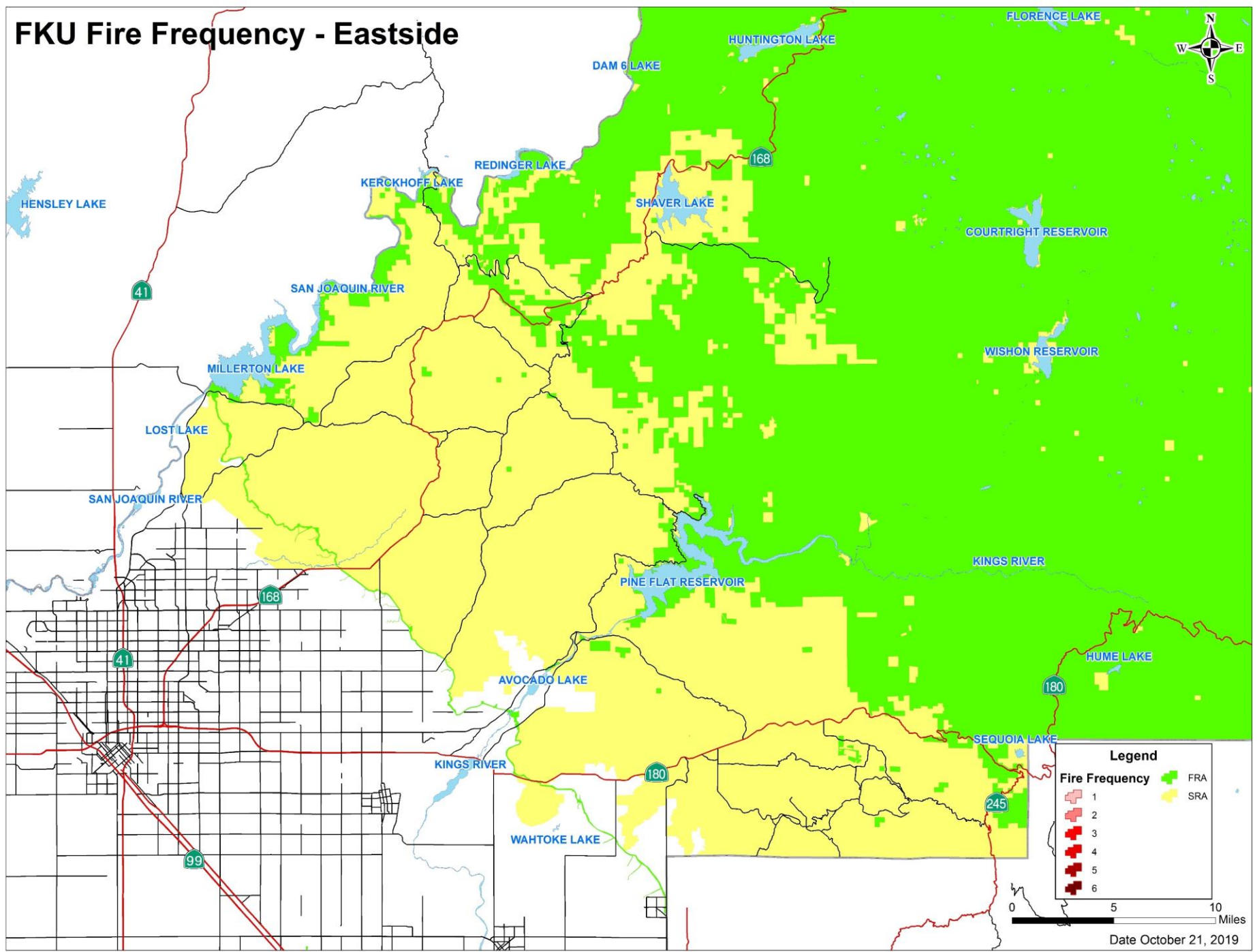


# FKU Fire Frequency - Eastside

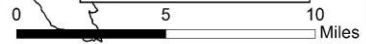


**Legend**

**Fire Frequency**

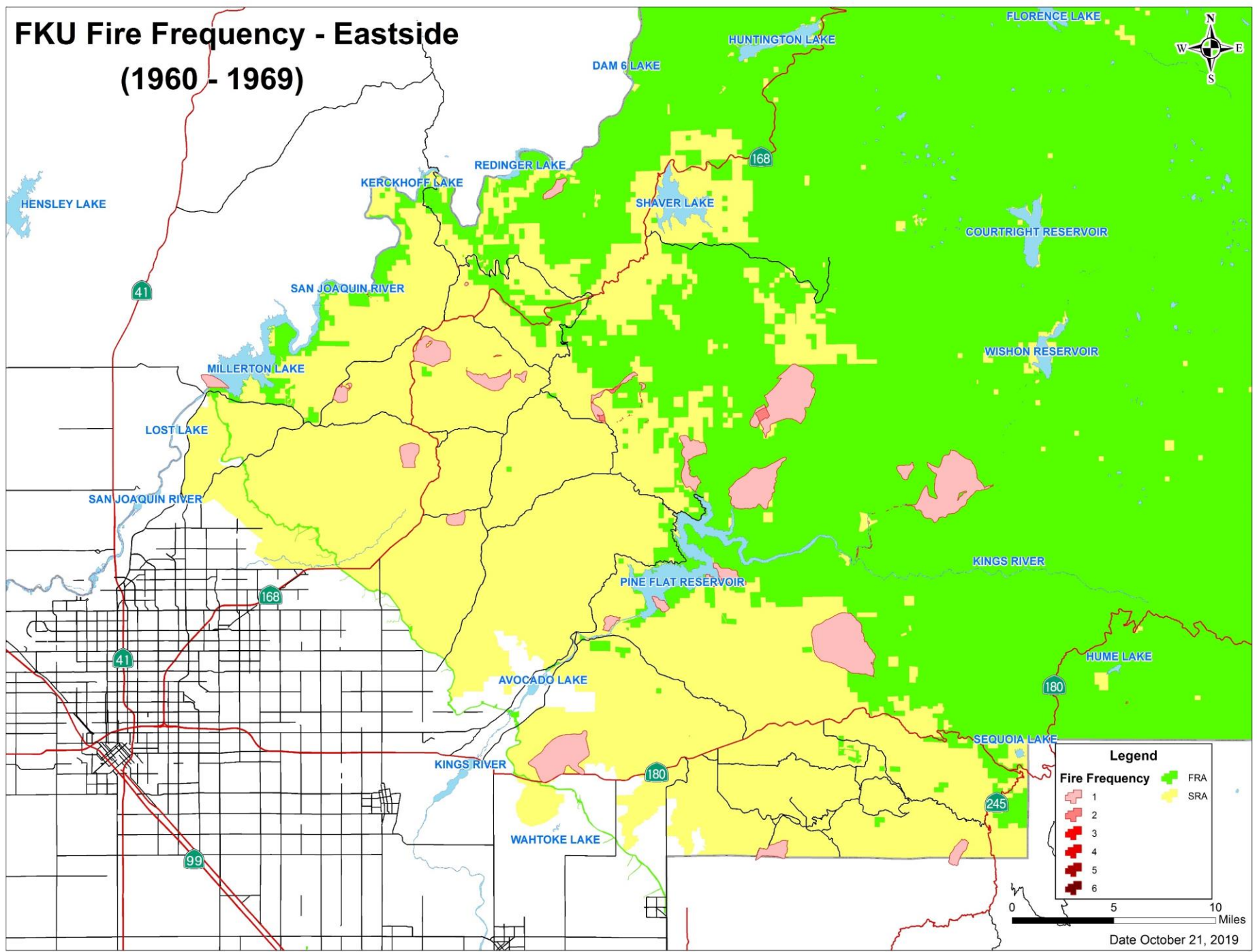
- 1
- 2
- 3
- 4
- 5
- 6

FRA  
SRA



Date October 21, 2019

# FKU Fire Frequency - Eastside (1960 - 1969)

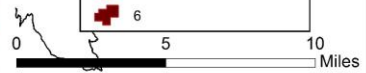


**Legend**

**Fire Frequency**

- 1
- 2
- 3
- 4
- 5
- 6

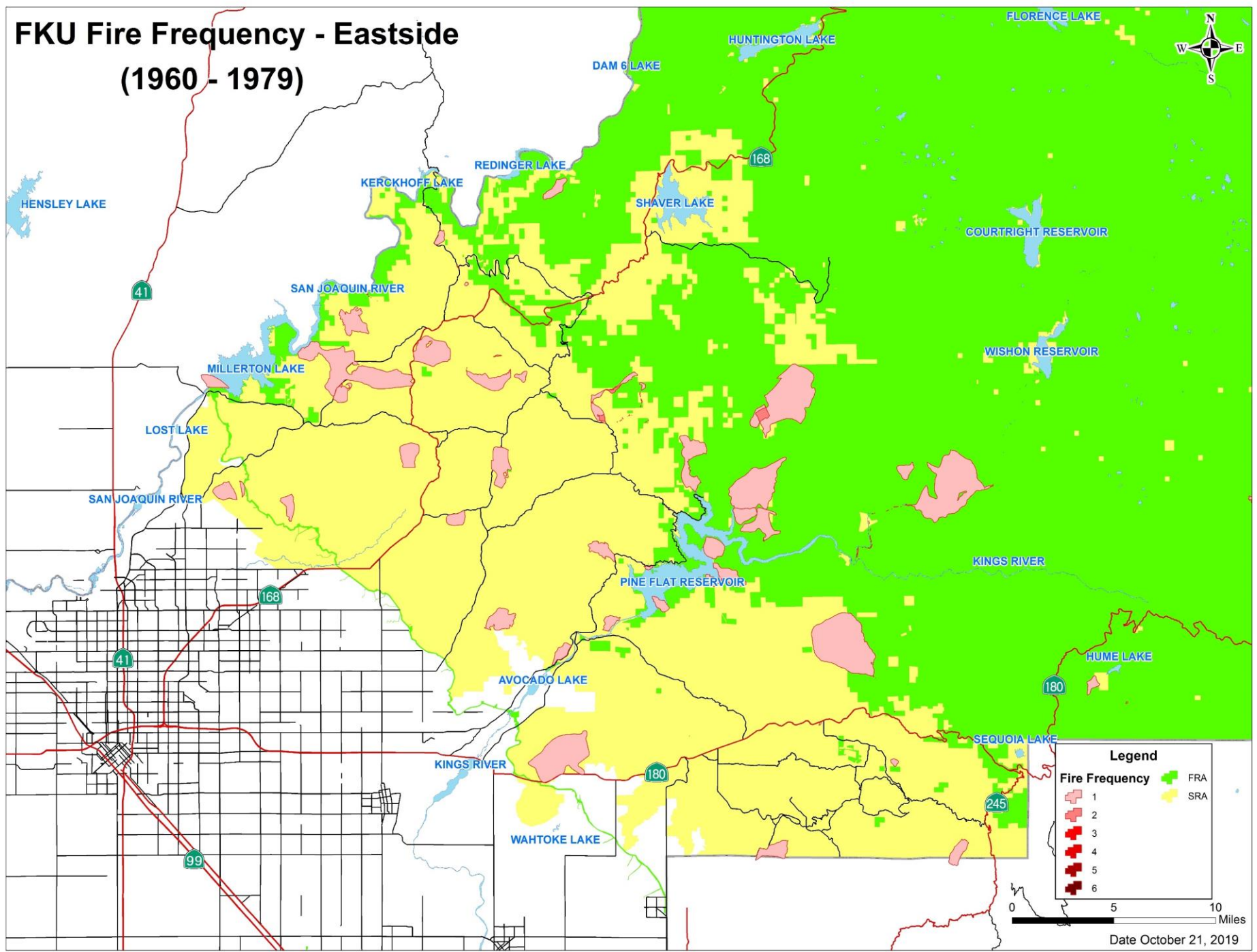
FRA  
SRA



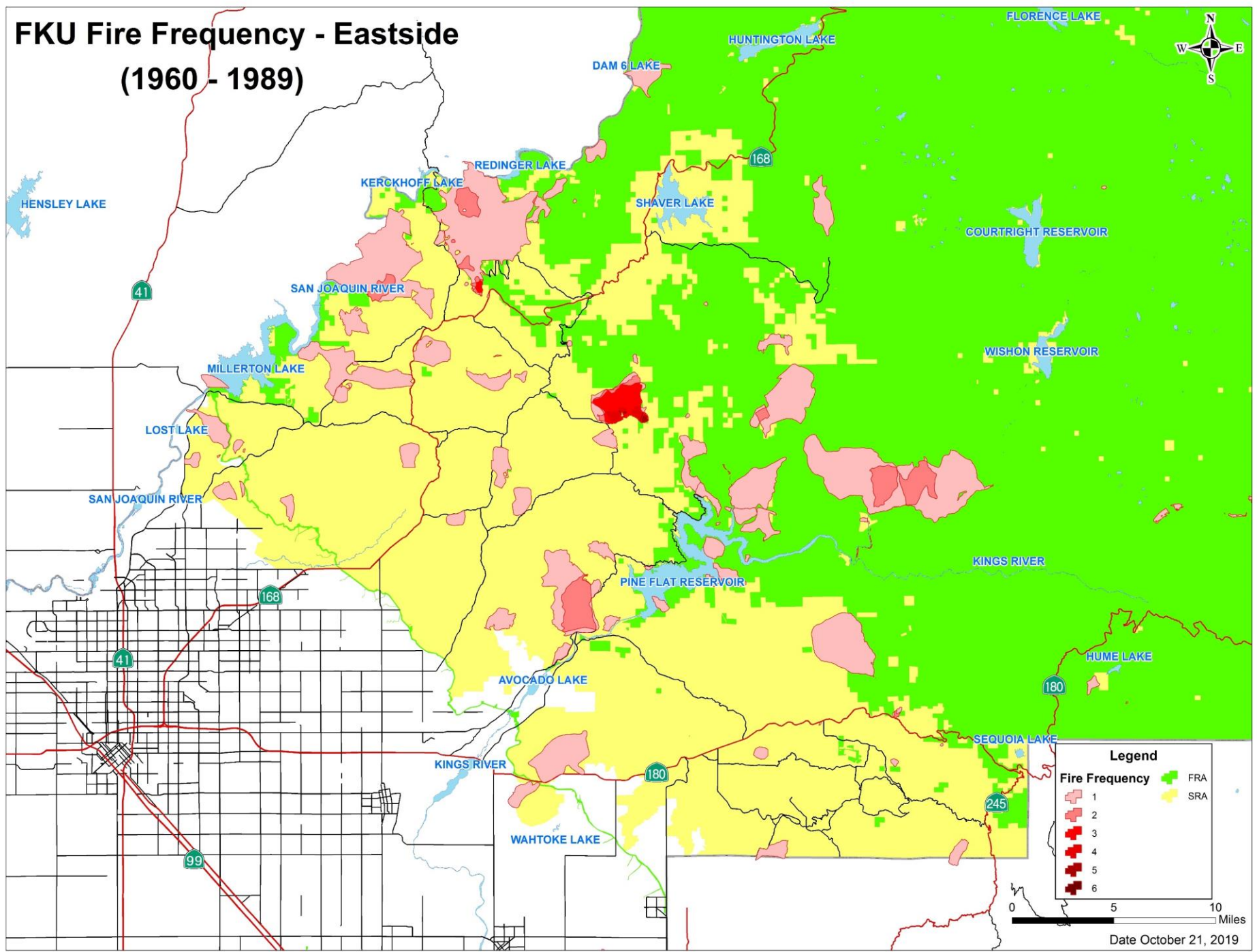
Date October 21, 2019



# FKU Fire Frequency - Eastside (1960 - 1979)



# FKU Fire Frequency - Eastside (1960 - 1989)

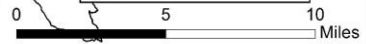


**Legend**

**Fire Frequency**

- 1
- 2
- 3
- 4
- 5
- 6

FRA  
SRA

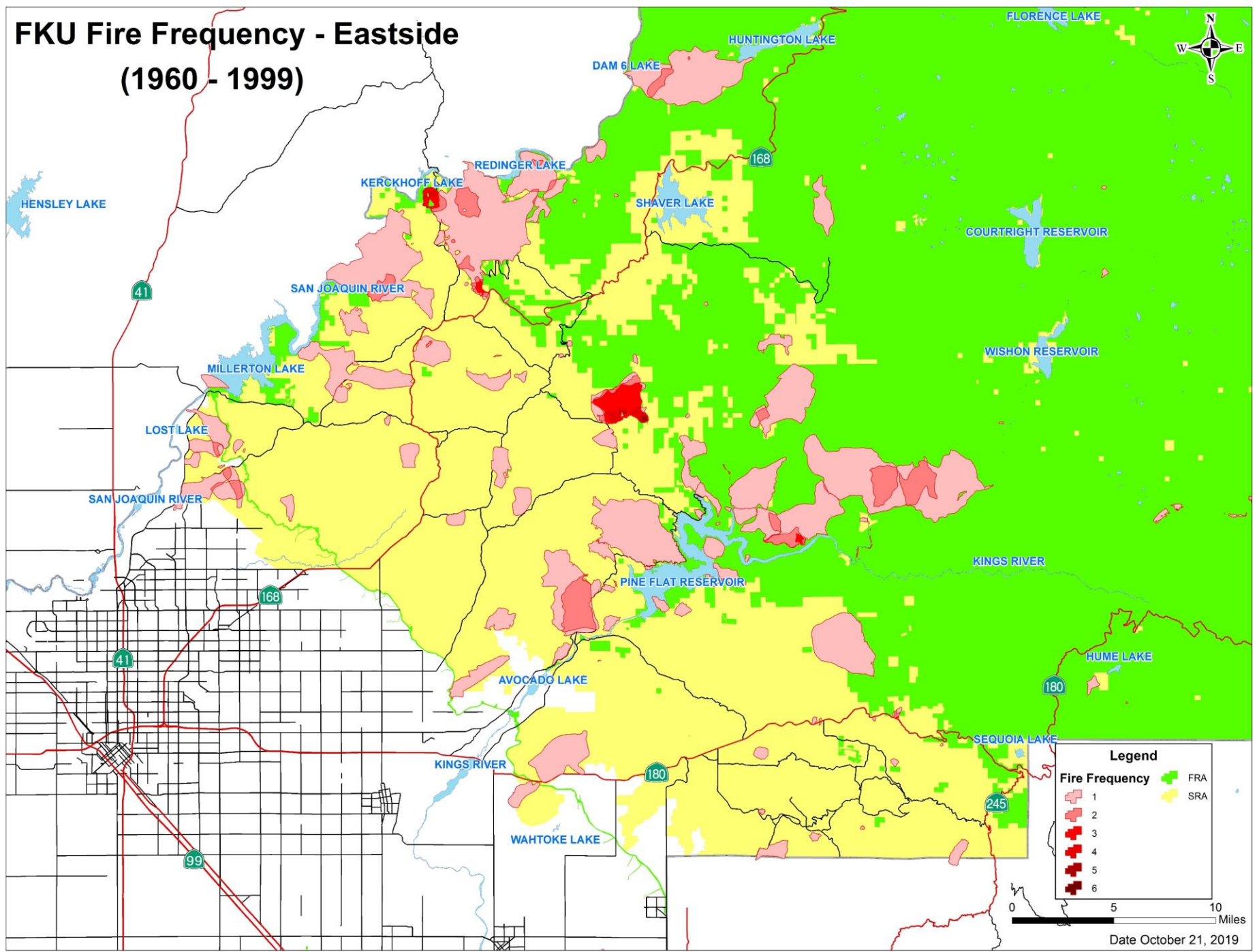


Date October 21, 2019



# FKU Fire Frequency - Eastside

## (1960 - 1999)

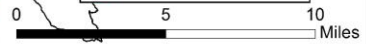


**Legend**

**Fire Frequency**

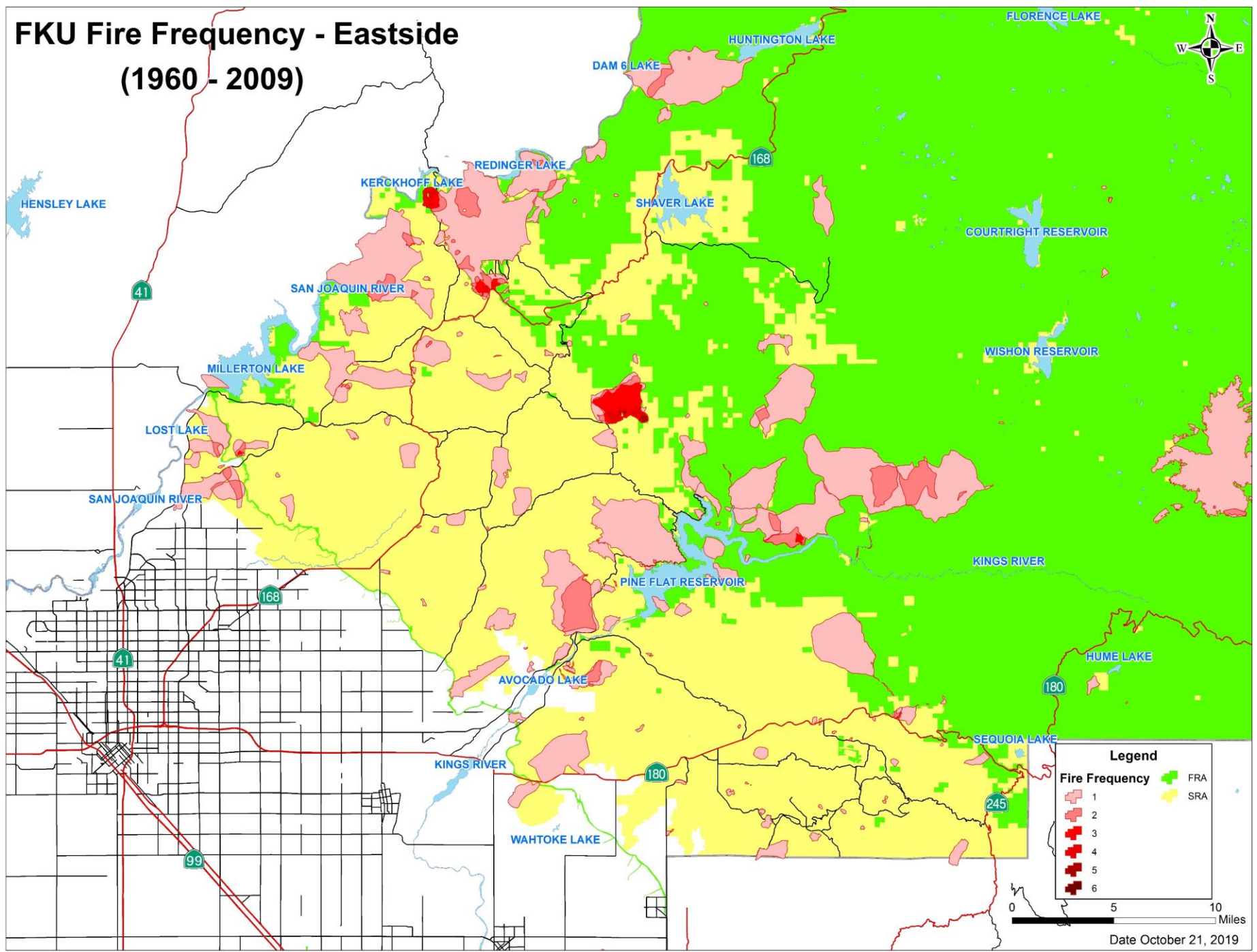
- 1
- 2
- 3
- 4
- 5
- 6

FRA  
SRA



Date October 21, 2019

# FKU Fire Frequency - Eastside (1960 - 2009)

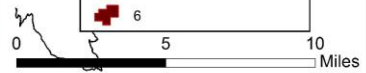


**Legend**

**Fire Frequency**

- 1
- 2
- 3
- 4
- 5
- 6

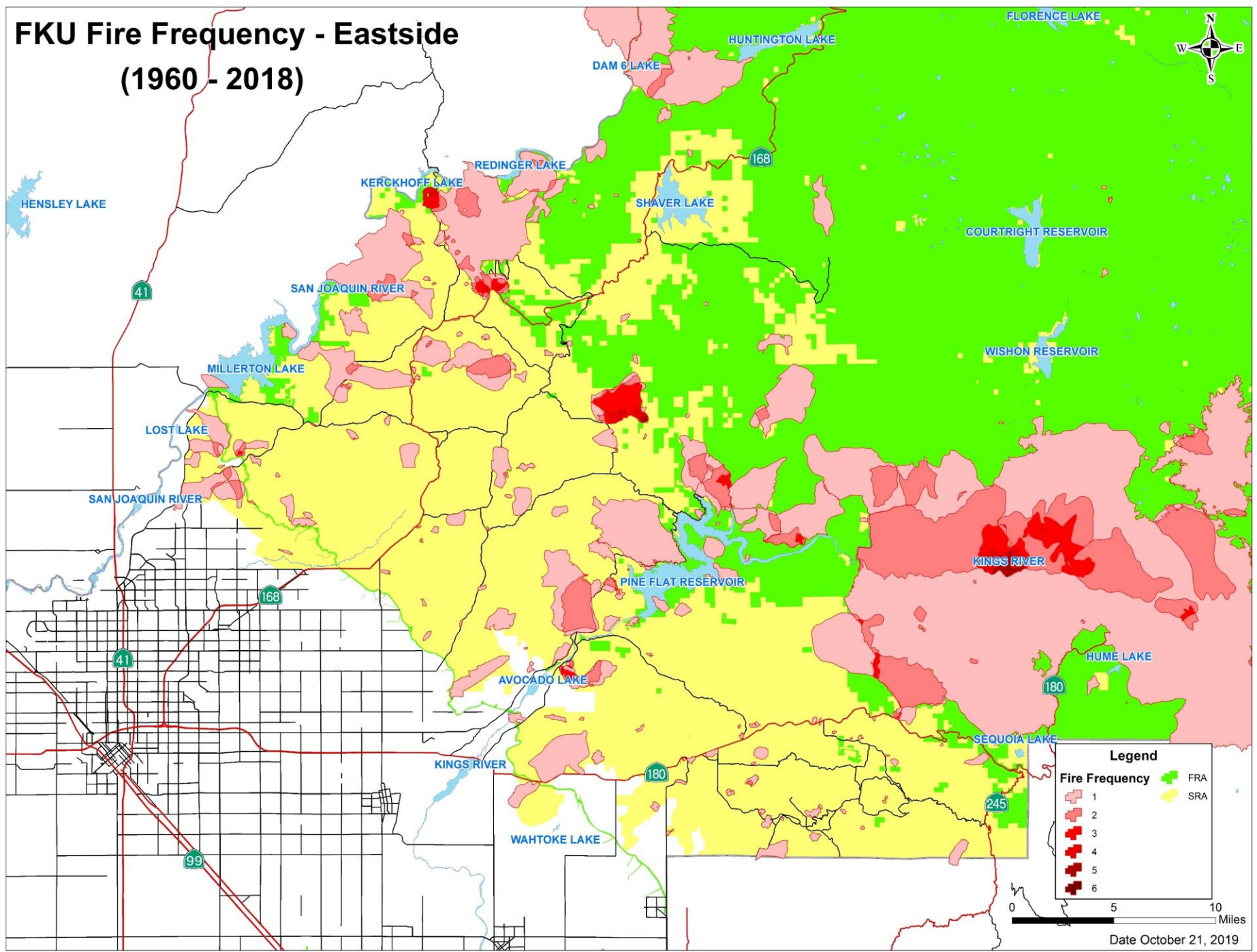
FRA  
SRA



Date October 21, 2019



# FKU Fire Frequency - Eastside (1960 - 2018)

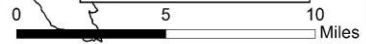


**Legend**

**Fire Frequency**

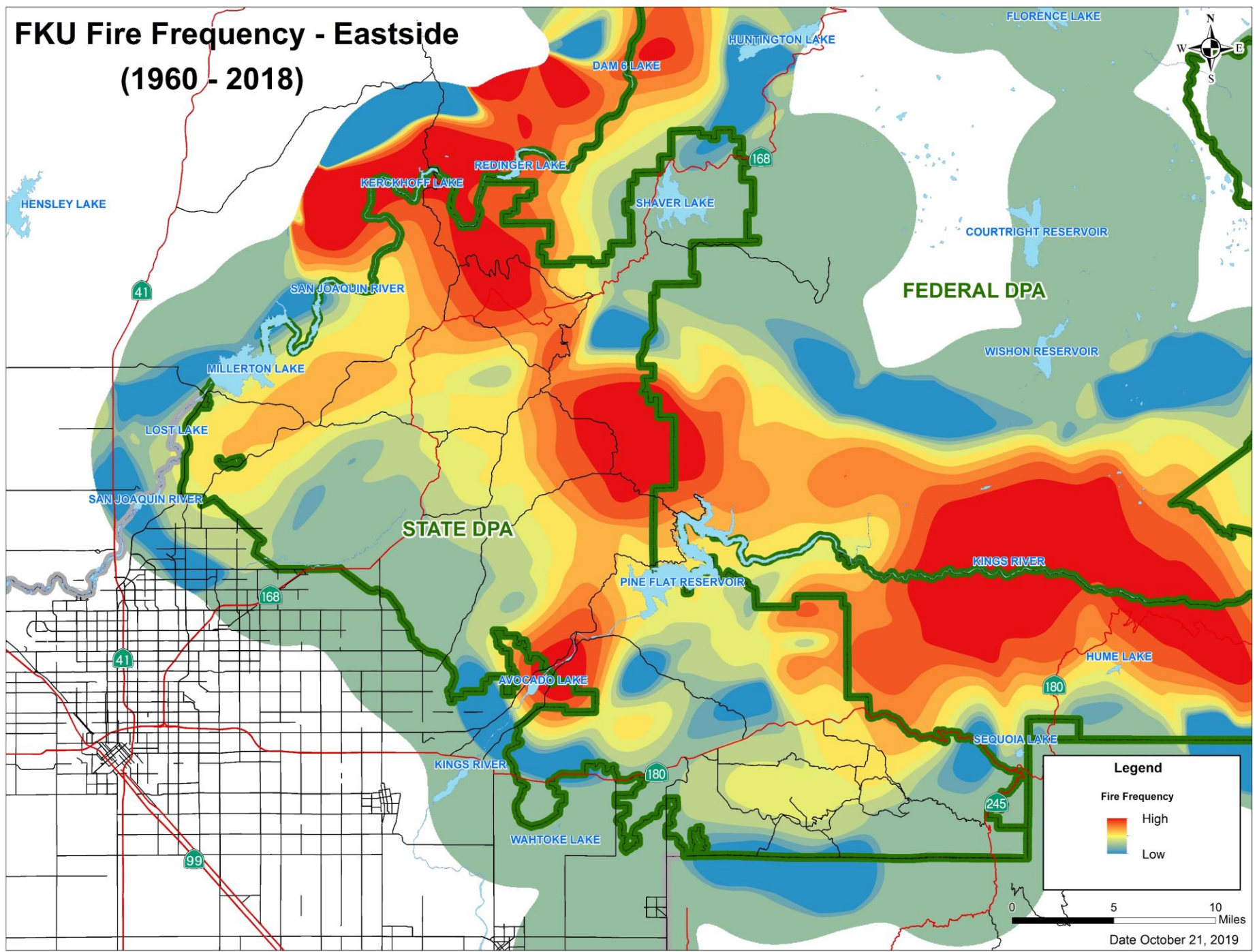
- 1
- 2
- 3
- 4
- 5
- 6

FRA  
SRA



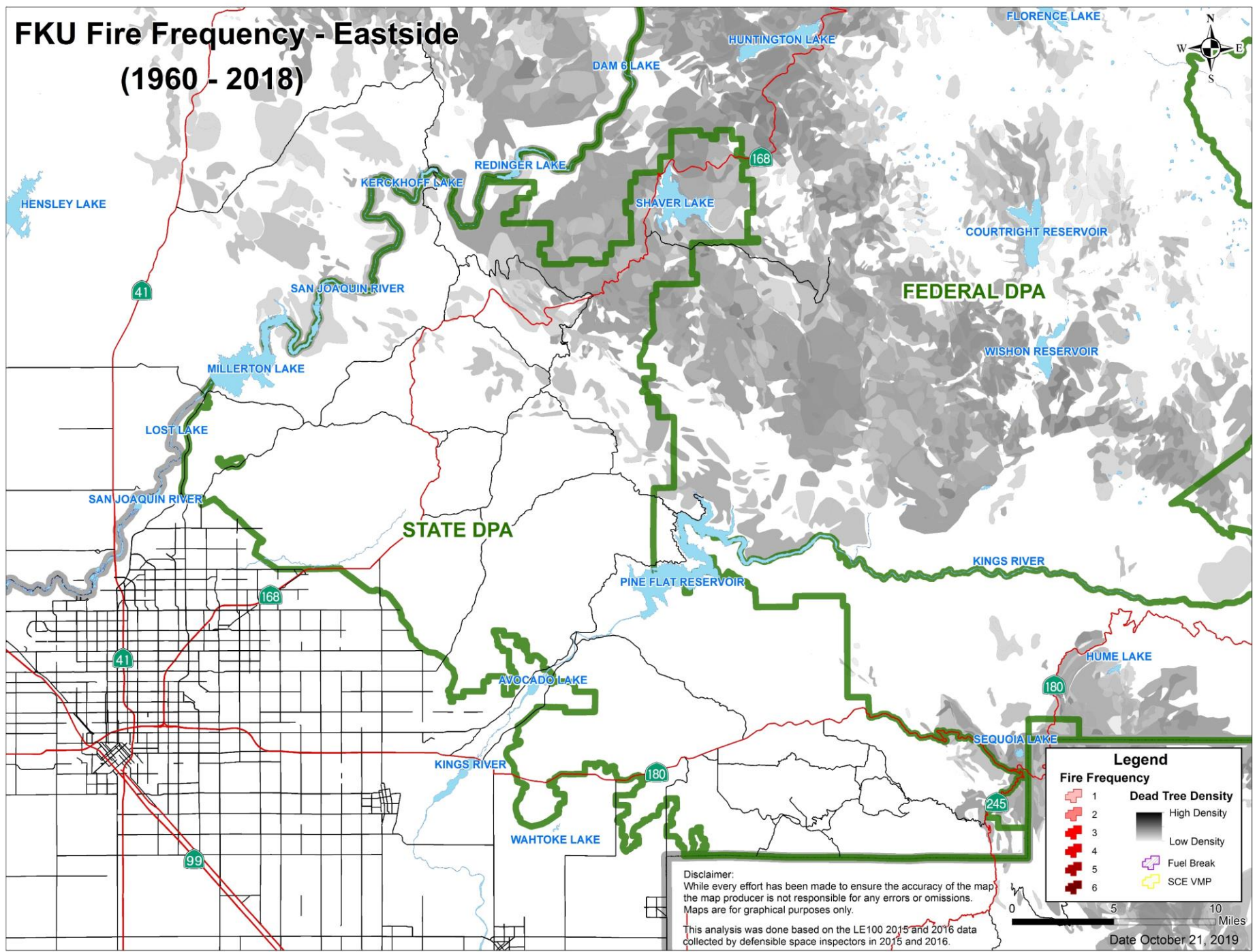
Date October 21, 2019

# FKU Fire Frequency - Eastside (1960 - 2018)





# FKU Fire Frequency - Eastside (1960 - 2018)



**Legend**

**Fire Frequency**

- 1
- 2
- 3
- 4
- 5
- 6

**Dead Tree Density**

- High Density
- Low Density

**Fuel Break**

**SCE VMP**

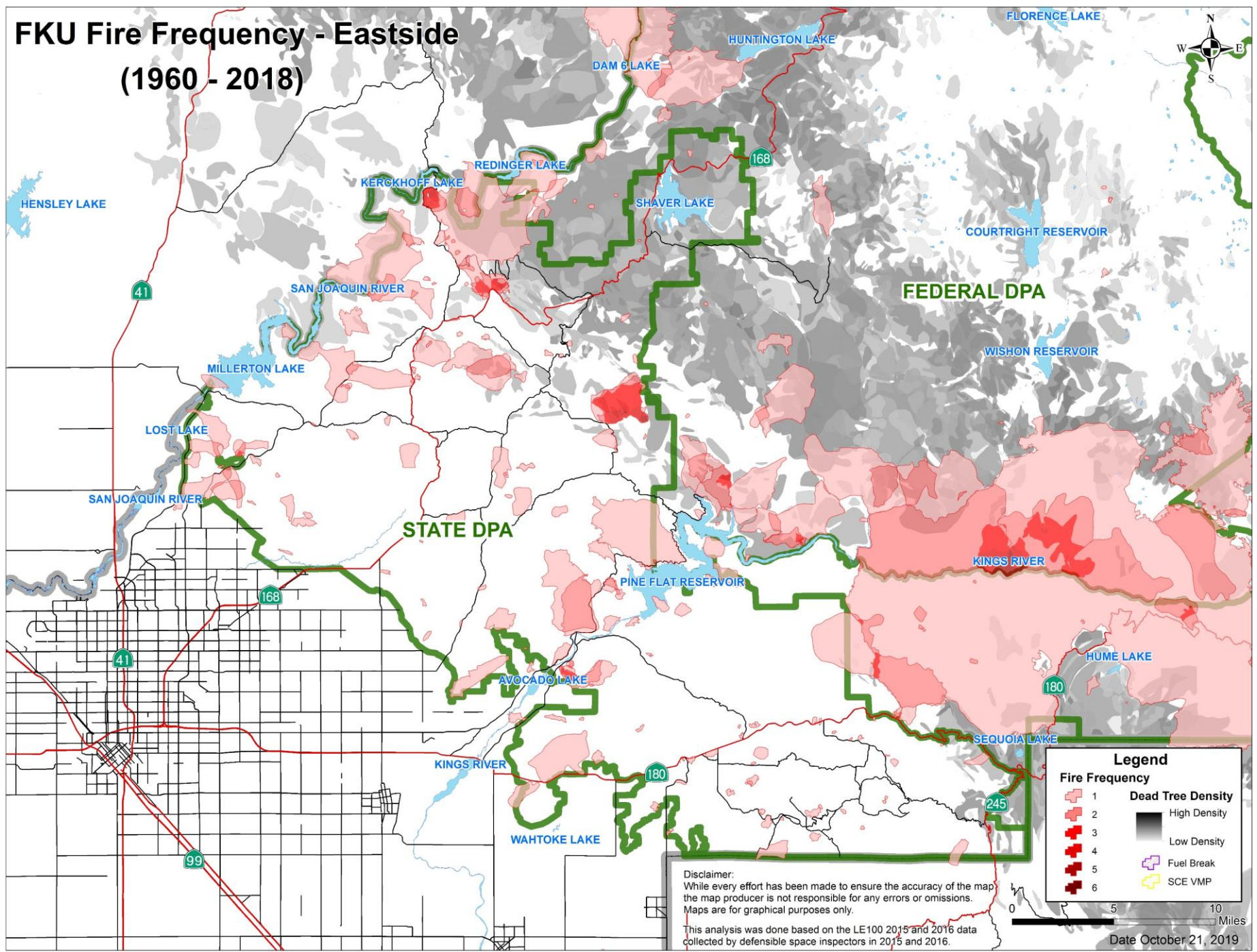
Disclaimer:  
While every effort has been made to ensure the accuracy of the map the map producer is not responsible for any errors or omissions. Maps are for graphical purposes only.

This analysis was done based on the LE100 2015 and 2016 data collected by defensible space inspectors in 2015 and 2016.

0 5 10 Miles  
Date October 21, 2019



# FKU Fire Frequency - Eastside (1960 - 2018)



**Legend**

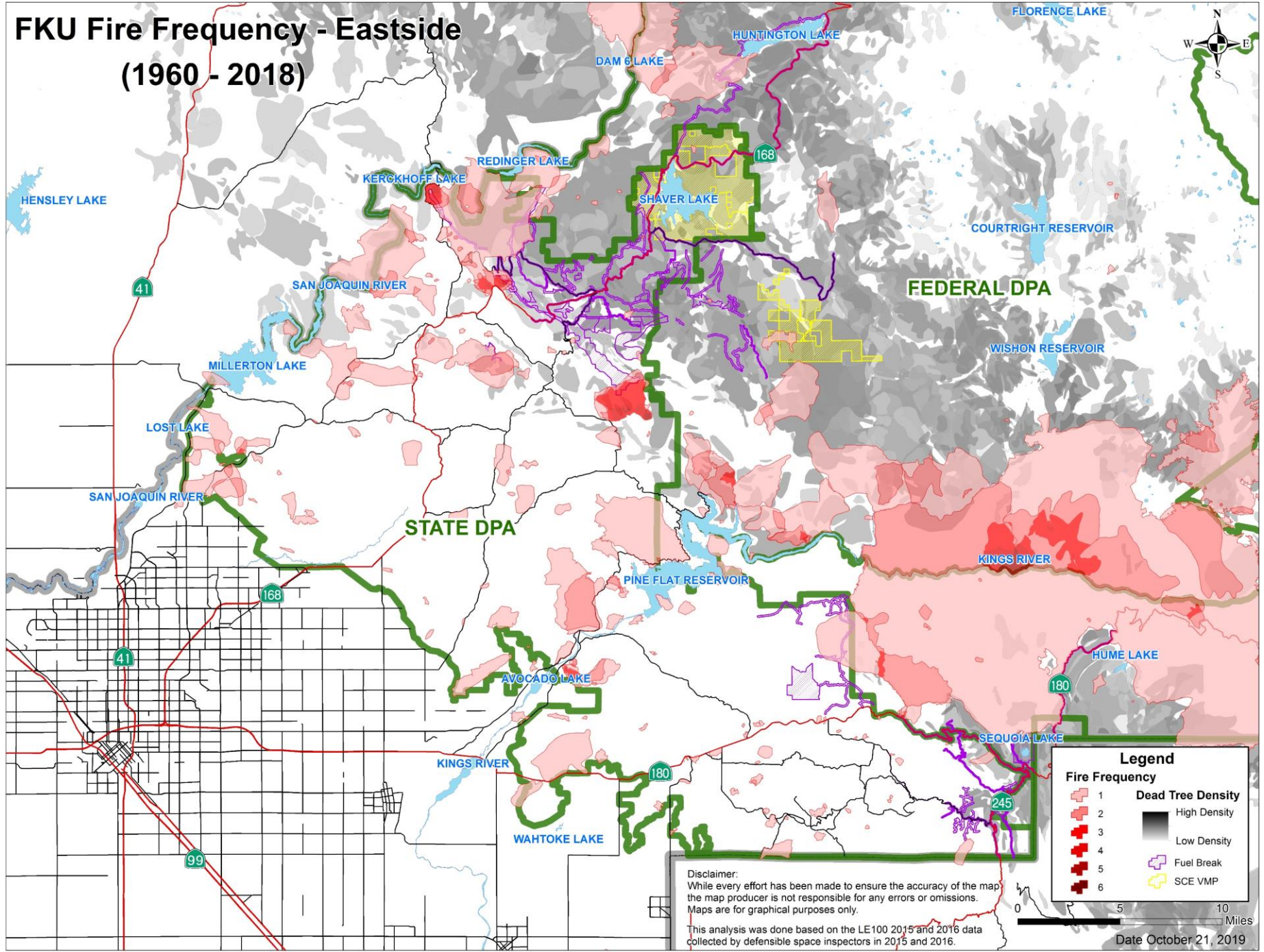
Fire Frequency	Dead Tree Density
1	High Density
2	Low Density
3	
4	
5	
6	
	Fuel Break
	SCE VMP

**Disclaimer:**  
While every effort has been made to ensure the accuracy of the map the map producer is not responsible for any errors or omissions. Maps are for graphical purposes only.  
This analysis was done based on the LE100 2015 and 2016 data collected by defensible space inspectors in 2015 and 2016.

0 5 10 Miles  
Date October 21, 2019



# FKU Fire Frequency - Eastside (1960 - 2018)



**Legend**

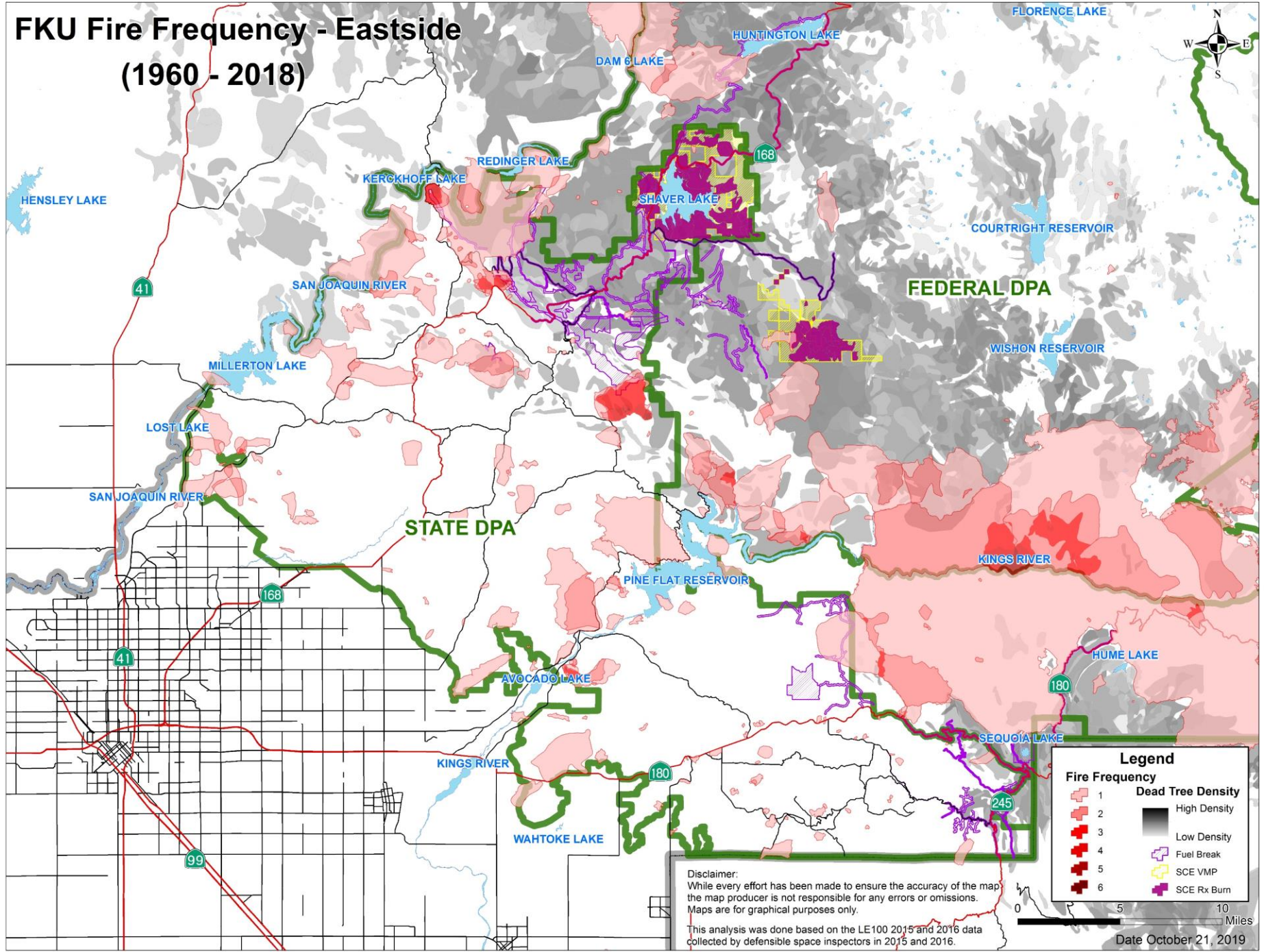
Fire Frequency	Dead Tree Density
1	High Density
2	Low Density
3	
4	
5	
6	
	Fuel Break
	SCE VMP

**Disclaimer:**  
While every effort has been made to ensure the accuracy of the map the map producer is not responsible for any errors or omissions. Maps are for graphical purposes only.  
This analysis was done based on the LE100 2015 and 2016 data collected by defensible space inspectors in 2015 and 2016.

0 5 10 Miles  
Date October 21, 2019



# FKU Fire Frequency - Eastside (1960 - 2018)



**Legend**

Fire Frequency	Dead Tree Density
1	High Density
2	Low Density
3	Fuel Break
4	SCE VMP
5	SCE Rx Burn
6	

**Disclaimer:**  
While every effort has been made to ensure the accuracy of the map the map producer is not responsible for any errors or omissions. Maps are for graphical purposes only.  
This analysis was done based on the LE100 2015 and 2016 data collected by defensible space inspectors in 2015 and 2016.

Date October 21, 2019