



Improve the protection of Amador County residents and their properties from the catastrophic effects of wildfire through action, partnerships, education and outreach.



Amador Fire Safe Council

Formed in 2002, AFSC is a 501(c)3 nonprofit organization with a volunteer board composed of local residents and stakeholders. We are active in the community and invest thousands of hours every year to benefit our neighbors.

- President: Pat Minyard
- Vice-President: Connie Consalves
- Treasurer: John Heissenbuttel
- Secretary: Jan Bray
- Directors: Paul Maben, Frank Leschinsky, Jay Francis, Richard Yarnell



Amador FSC Priorities

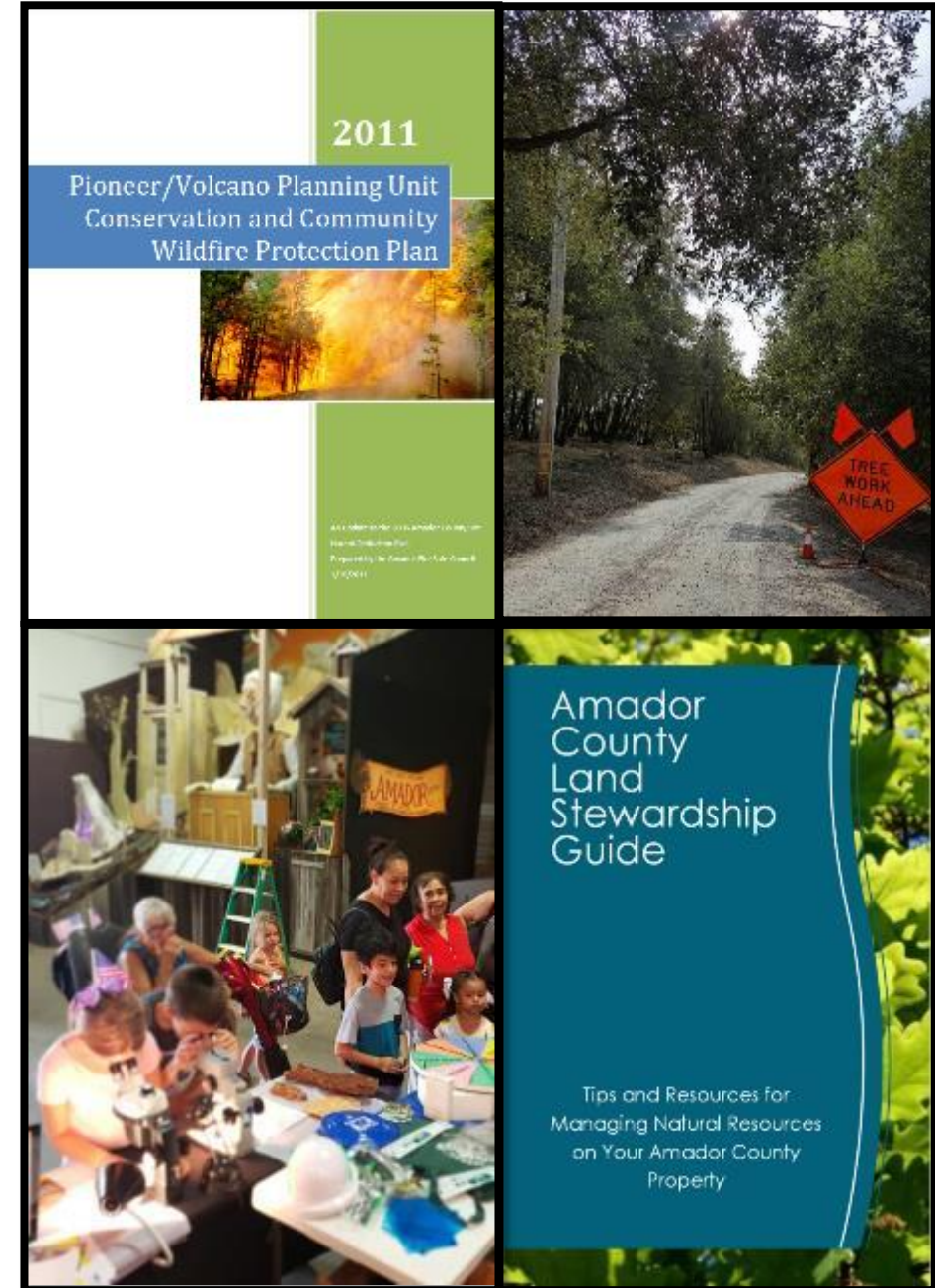
AFSC Mission: Improve the protection of Amador County residents and their properties from the catastrophic effects of wildfire through action, partnerships, education and outreach.

The AFSC has identified several priorities that it must address in order to complete its mission now and into the future . . .

- Reduce potential for catastrophic wildfire
- Ensure the community is prepared in the event of catastrophic wildfire
- Operate in a financially-responsible manner through good stewardship of limited funds

Past Projects

- Annual PG&E Projects: Ingress/Egress
- Pine Acres Fuel Break
- Outreach & Education
- Community Wildfire Protection Plans:
 - 2016 High County CWPP
 - 2013 Greater Pine Grove CWPP
 - 2012 Pioneer/Volcano CWPP
 - 2015 County-wide CWPP





Amador Fire Safe Council Current Projects

- Mitchell Mine Fuel Break
- Ingress/Egress & Community Fuel Break Vegetation Management
- Fuel Break Mapping
- Early Fire Detection Cameras
- Evacuation Route Committee/Mapping
- Tiger Creek Fuel Break – *seeking funding*
- Amador Fire Prevention/Preparedness Education Project – *seeking funding*



Mitchell Mine Fuel Break

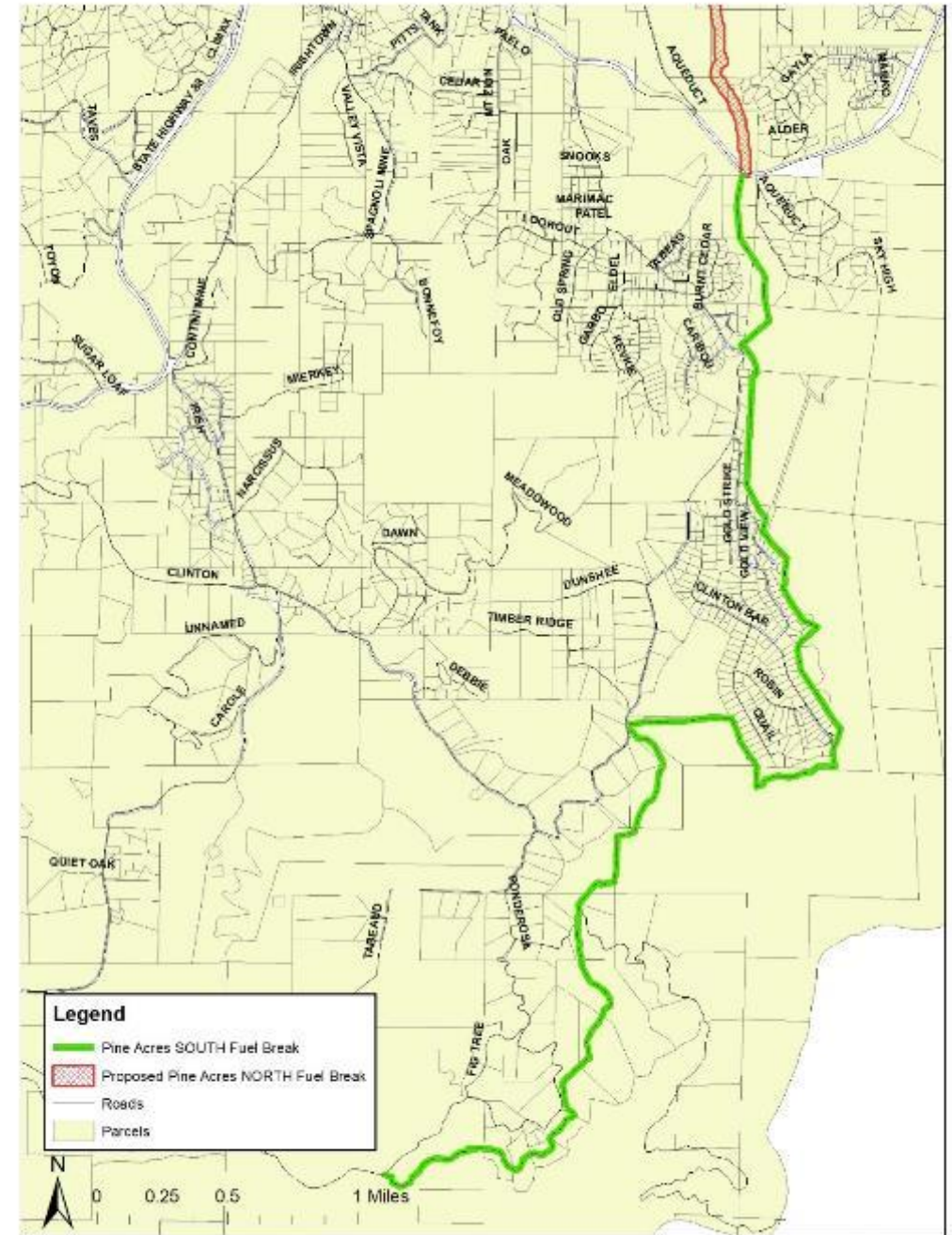


Pine Acres Fuel Break

- Completed Spring 2018
- Project Partners: CALFIRE, Pine Grove CYA Camp, CA Fire Safe Council, Private Property Owners
- 300 foot Fuel Break and Ingress/Egress on Southern non-County Roads (Ponderosa Way/Fig Tree)
- Northern end links to the Mitchell Mine Fuel Break



Pine Acres SOUTH Fuel Break

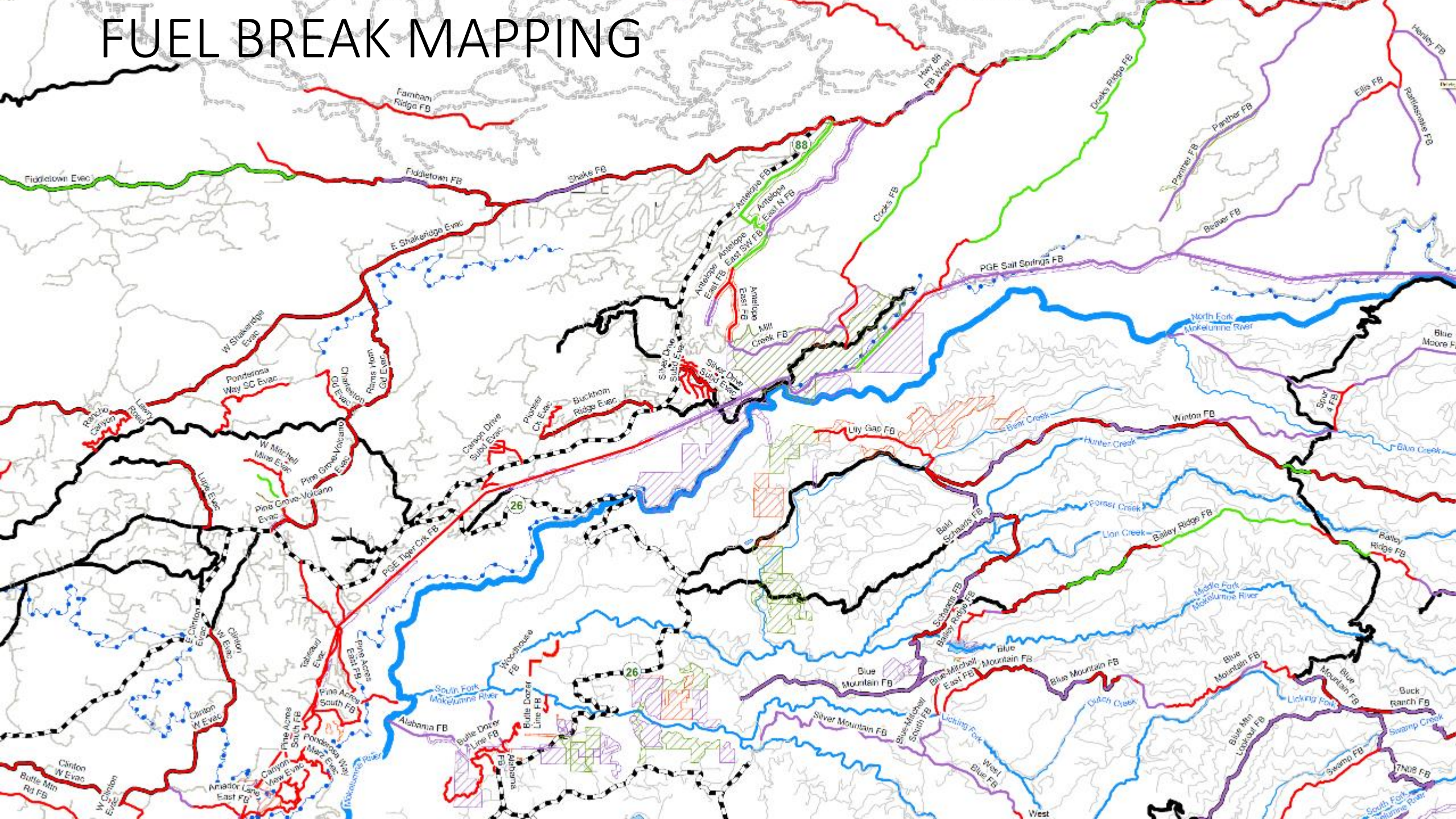


Ingress/Egress & Community Fuel Break Vegetation Management

Annual PG&E Vegetation Management Grant



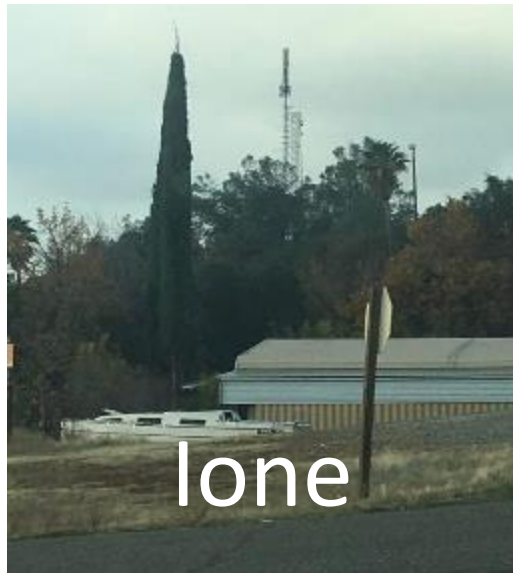
FUEL BREAK MAPPING



Early Fire Detection Cameras

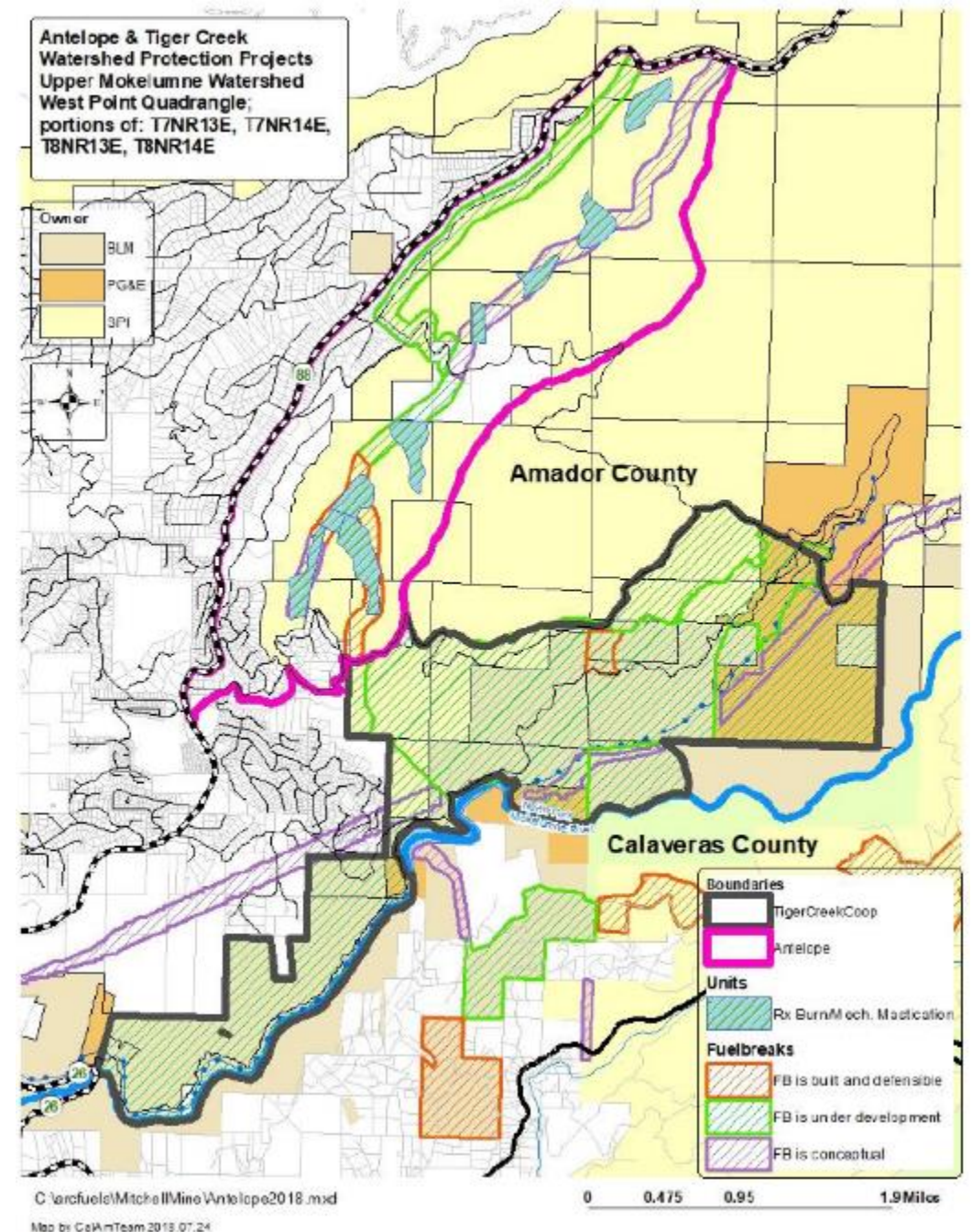
University of Nevada/Reno

www.AlertWildfire.org



Tiger Creek Fuel Breaks

- The Tiger Creek Fuel Break and Watershed Protection Project begins at the Highway 26 bridge over the North Fork of the Mokelumne, east all the way to Doaks Ridge up to Highway 88 just below Hams Station. Project Partners: Bureau of Land Management (BLM), Sierra Pacific Industries (SPI), Pacific Gas & Electric (PG&E) and the USDA Forest Service (USFS).





Thank You!

Amanda Watson

AmadorFireSafe@gmail.com

www.AmadorFireSafe.org