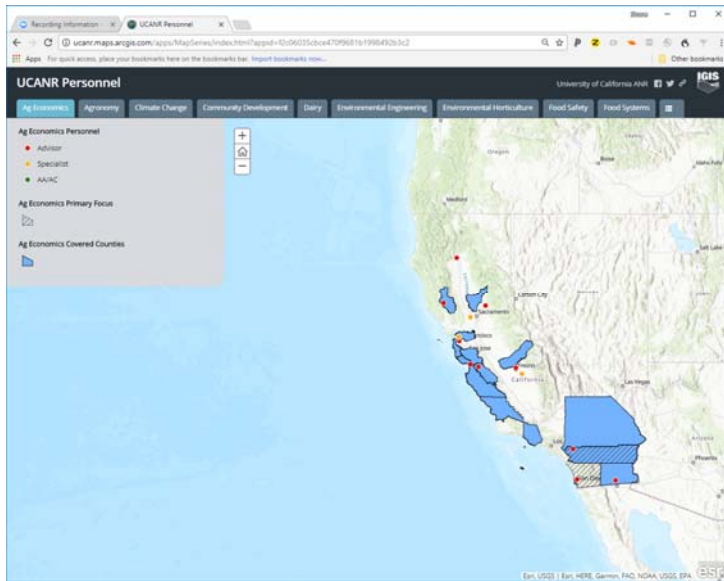
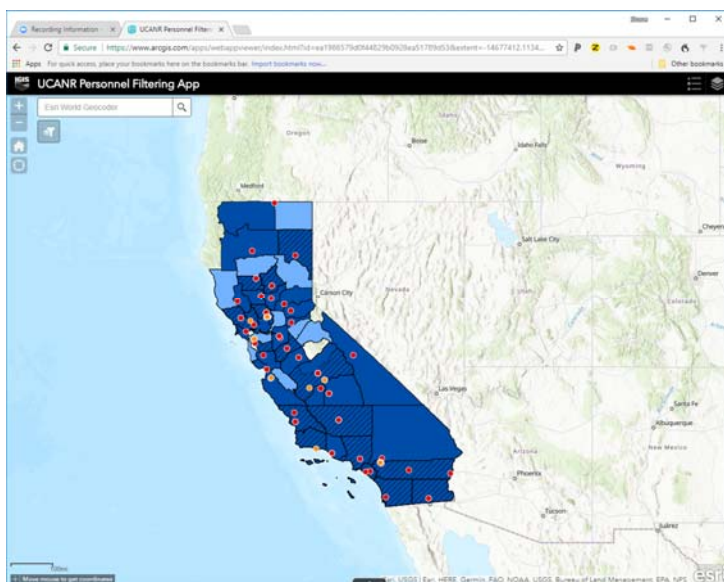




Please use the following tools to visualize the current (2018) footprint of personnel working in different topic areas.



The storymap shown in the above app (<http://arcg.is/0yWGfj>) can be used to quickly see where personnel are located around the state. Use the tabs at the top of the map to switch between different topic areas. You cannot turn individual layers on or off with the app above. You can turn individual layers on/off with the UCANR Personnel Filtering App, below.



The UCANR Personnel Filtering App (<https://arcg.is/0XHSXb>) can be used to query and visualize the data more fully. We have created a short video (<https://goo.gl/dzykqK>) that will walk you through the different features of this app.