

# Field Fumigation Update

**Santa Cruz County  
Agricultural Commissioner's Office**

175 Westridge Drive  
Watsonville, CA 95076  
(831)763-8080

[www.agdept.com](http://www.agdept.com)

# Pesticides & Schools Regulation

- ❑ Prohibit most agricultural pesticide applications within  $\frac{1}{4}$  mile of schools/day care centers
- ❑ Most applications not allowed M – F between 6 a.m. to 6 p.m.



# Pesticides & Schools Regulation

- ▣ Growers must provide annual notification of all pesticide products that may be used
- ▣ Growers must provide specific notification 48 hours prior to applications M - F for allowed methods such as ground-rig sprayer



# Pesticides & Schools Regulations

- ▣ Comment period closed
- ▣ DPR reviewing and responding to comments
- ▣ Changes to the proposal?
  - No changes: regulation moves forward
  - Substantial changes: 15 day comment period
  - Major changes: 45 day comment period

TITLE 3. DEPARTMENT OF PESTICIDE REGULATION  
Pesticide Use Near Schoolsites  
DPR Regulation No. 16-004

NOTICE OF PROPOSED REGULATORY ACTION

The Department of Pesticide Regulation (DPR) proposes to adopt sections 6690, 6691, 6692, and 6693 of Title 3, California Code of Regulations (3 CCR). In summary, the proposed action would require growers to notify public K-12 schools, child day care facilities, and county agricultural commissioners when certain pesticide applications made for the production of an agricultural commodity near a schoolsite are planned in the coming year and also a few days prior to the applications. In addition, certain pesticide applications near these schoolsites will be prohibited at certain times.

# Stay Informed



County of Santa Cruz *California*  
Serving the Community ~ Working for the Future

SHARE

Select Language

Government Departments Living Working Business Visiting

Google™ Custom Search



## Agricultural Commissioner

- General Inquiries
- Mosquito Abatement / Vector Control
- Other Agricultural Programs
- Pest Prevention
- Pesticide Use Enforcement
- Weights and Measures



**Juan Hidalgo, Agricultural Commissioner**  
Sealer, Weights and Measures  
Director, Mosquito and Vector Control

### Popular Links

- Office Locations
- Crop Reports
- Enter On-line PURs
- Other Agencies

### NEWS AND ANNOUNCEMENTS

[Registration Form \(PCB, PCA, SPCB, FLC, Pilot\)](#)

**Information from December 2016 Continuing Education Class:**

- WPS Updates ([Eng](#) / [Span](#))
- Regs Review ([Eng](#) / [Span](#))
- Proposed DPR Schoolsites Reg ([Eng](#) / [Span](#))

[2015 Crop Report](#)

[Economic Contributions of Santa Cruz County Agriculture](#)

[CDPR License Renewal Reminder](#)

**Annual Device Administrative Fee:**

[Text of Regulations](#)

[FAQ](#)



SANTA CRUZ COUNTY  
2015 CROP REPORT



# Sources of Information

 **County of Santa Cruz** *California*  
*Serving the Community ~ Working for the Future*

**Government** **Departments** **Living Working** **Business** **Visiting** Google™ Cust

## Agricultural Commissioner

**General Inquiries**  
**Mosquito Abatement / Vector Control** ▶  
**Other Agricultural Programs** ▶  
**Pest Prevention** ▶  
**Pesticide Use Enforcement** ▶  
**Weights and Measures** ▶

### Pesticide Use Enforcement

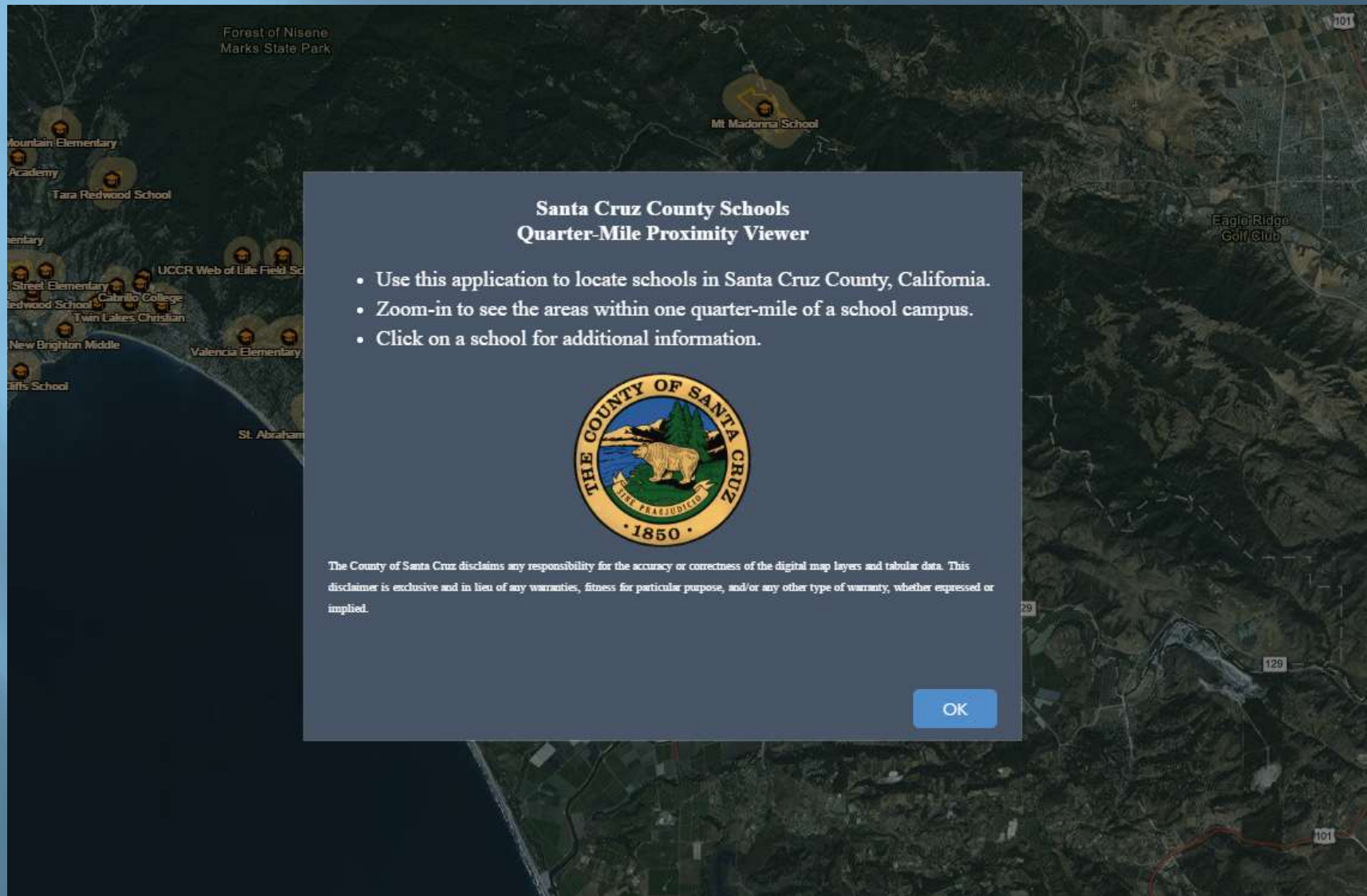
#### General Information

- [California Department of Pesticide Regulation](#)
- [Enter On Line PURs](#)
- [1/4 Mile School Proximity Map Viewer](#) ←
- [Approved and Pending Continuing Education Classes](#) ←

#### Field Fumigant Information


- [What are Field Fumigations?](#) ←
- [EPA Soil Fumigant Tool-Box](#)

# Informational Tools



**Santa Cruz County Schools  
Quarter-Mile Proximity Viewer**

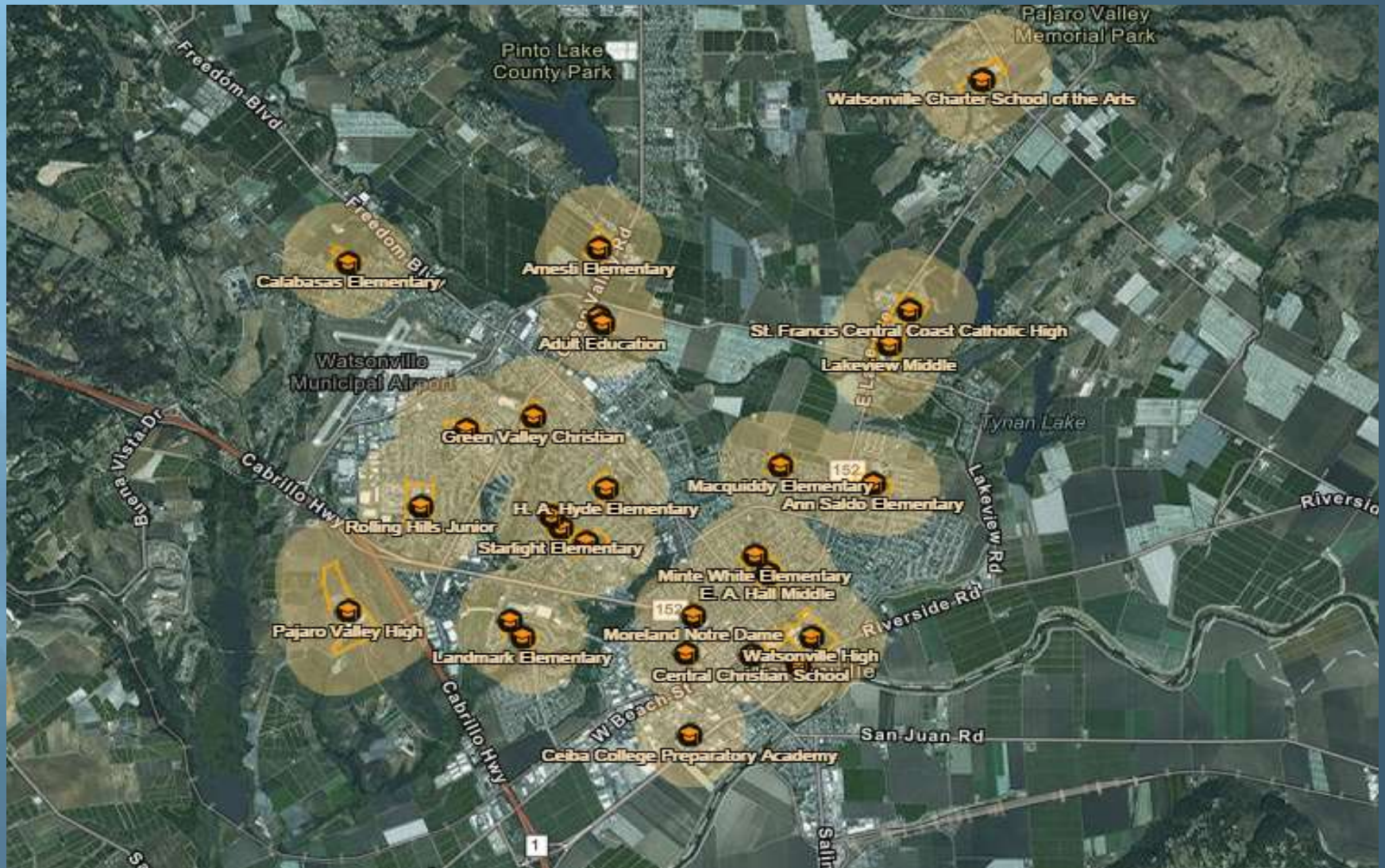
- Use this application to locate schools in Santa Cruz County, California.
- Zoom-in to see the areas within one quarter-mile of a school campus.
- Click on a school for additional information.



The County of Santa Cruz disclaims any responsibility for the accuracy or correctness of the digital map layers and tabular data. This disclaimer is exclusive and in lieu of any warranties, fitness for particular purpose, and/or any other type of warranty, whether expressed or implied.

OK

# Santa Cruz County Schools

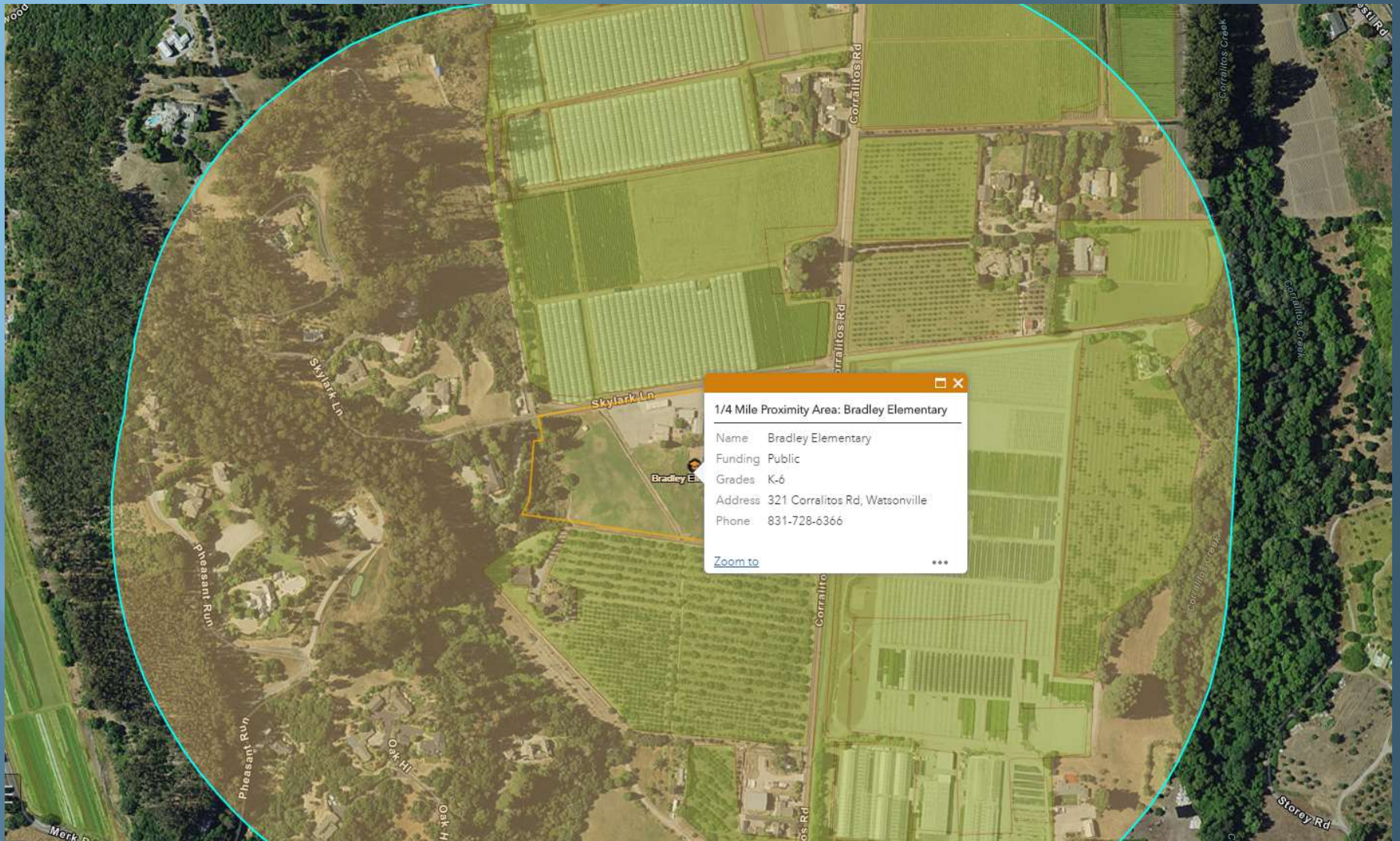




# ¼ Mile School Proximity Map



# Contact Information



**Santa Cruz County  
Agricultural Commissioner  
Website**

**[www.agdept.com](http://www.agdept.com)**

# 2016 Fumigation Season Review

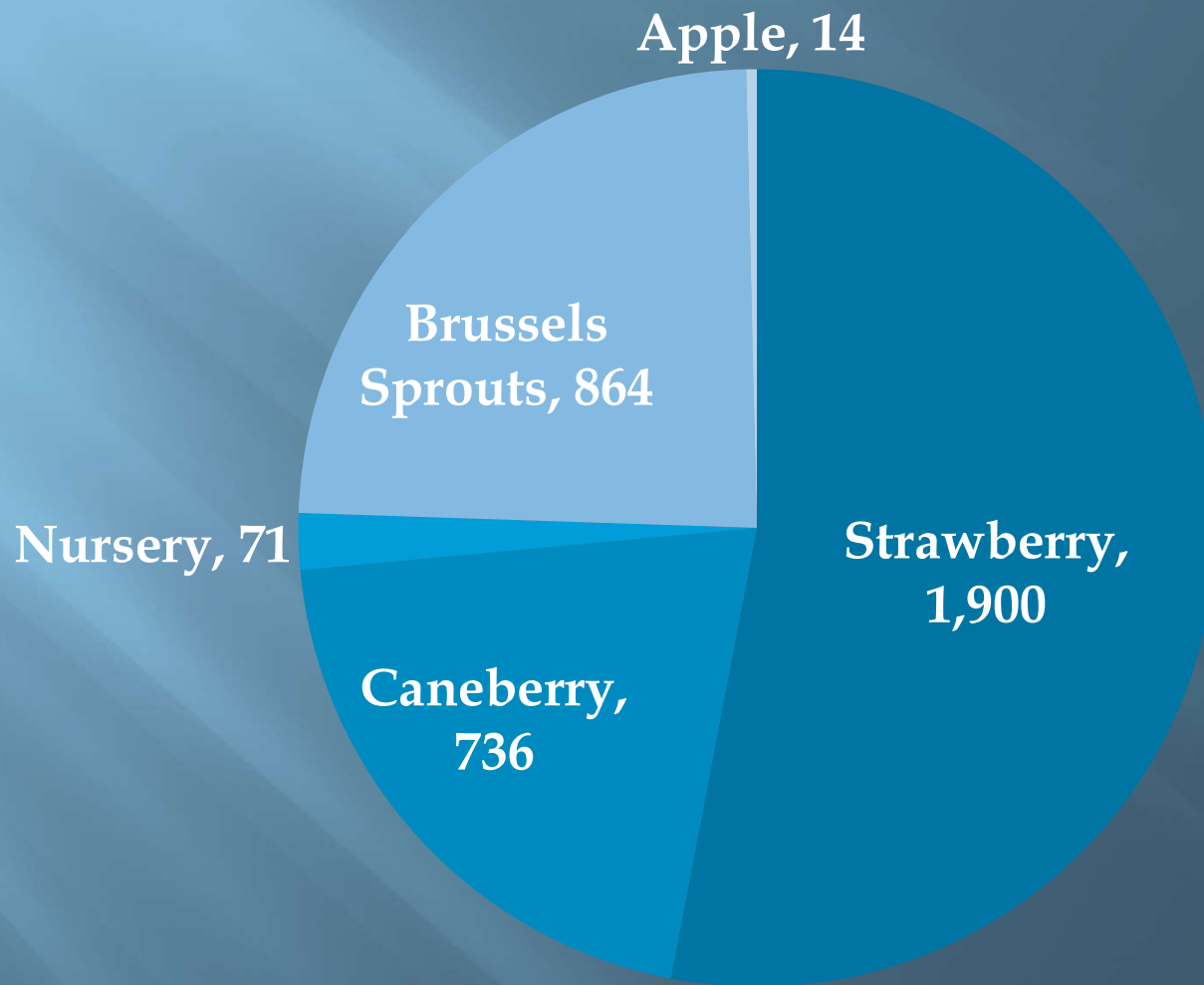
- ▣ 2016 Fumigation season statistics
- ▣ Areas in need of improvement
- ▣ 2017 Santa Cruz County fumigation Permit Conditions

# Top Commodities Fumigated

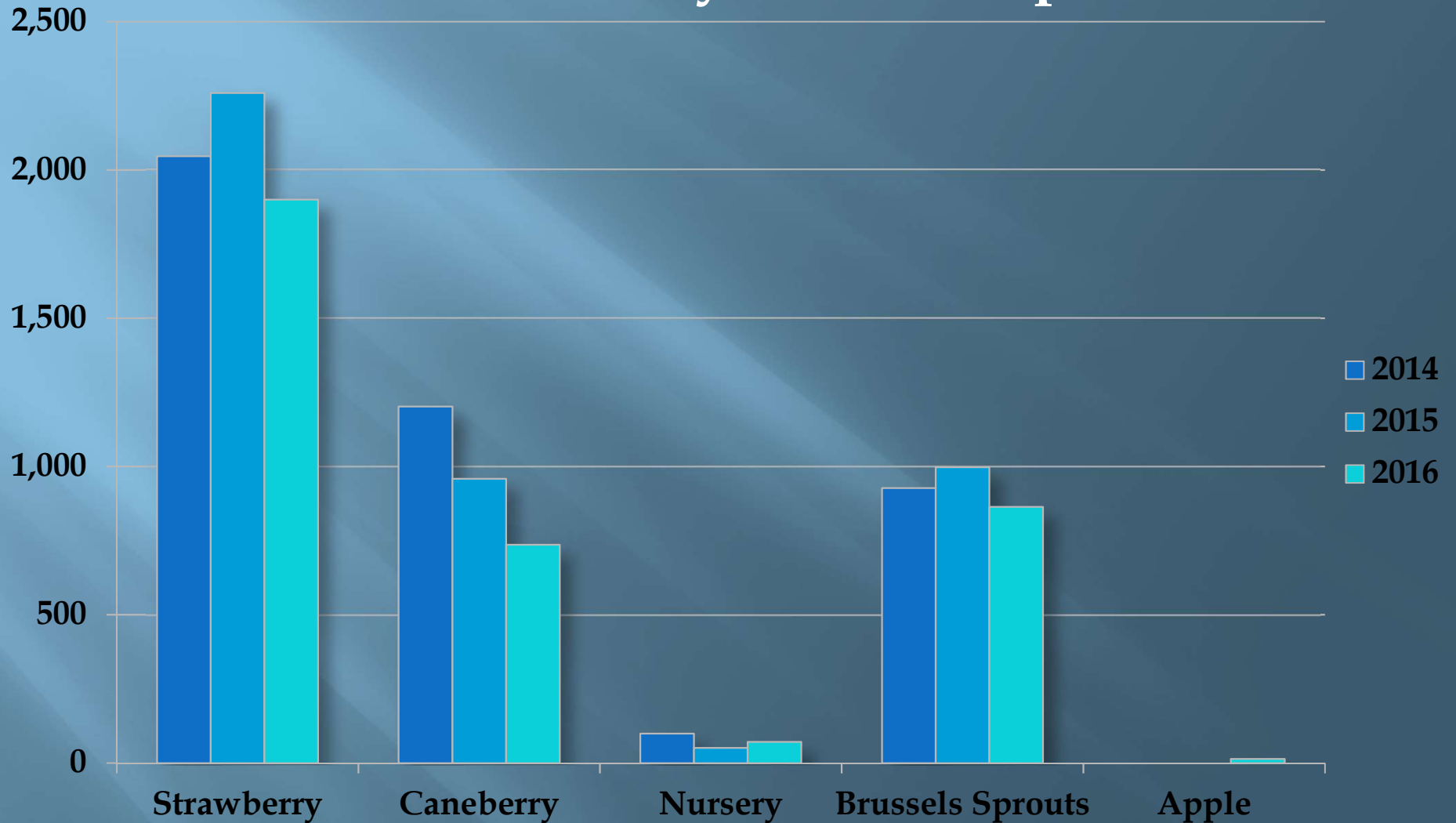
- Strawberry
- Brussels Sprouts
- Caneberries
- Nursery



# Acres Fumigated in 2016: 3,585



# 3 Year Commodity Acres Comparison

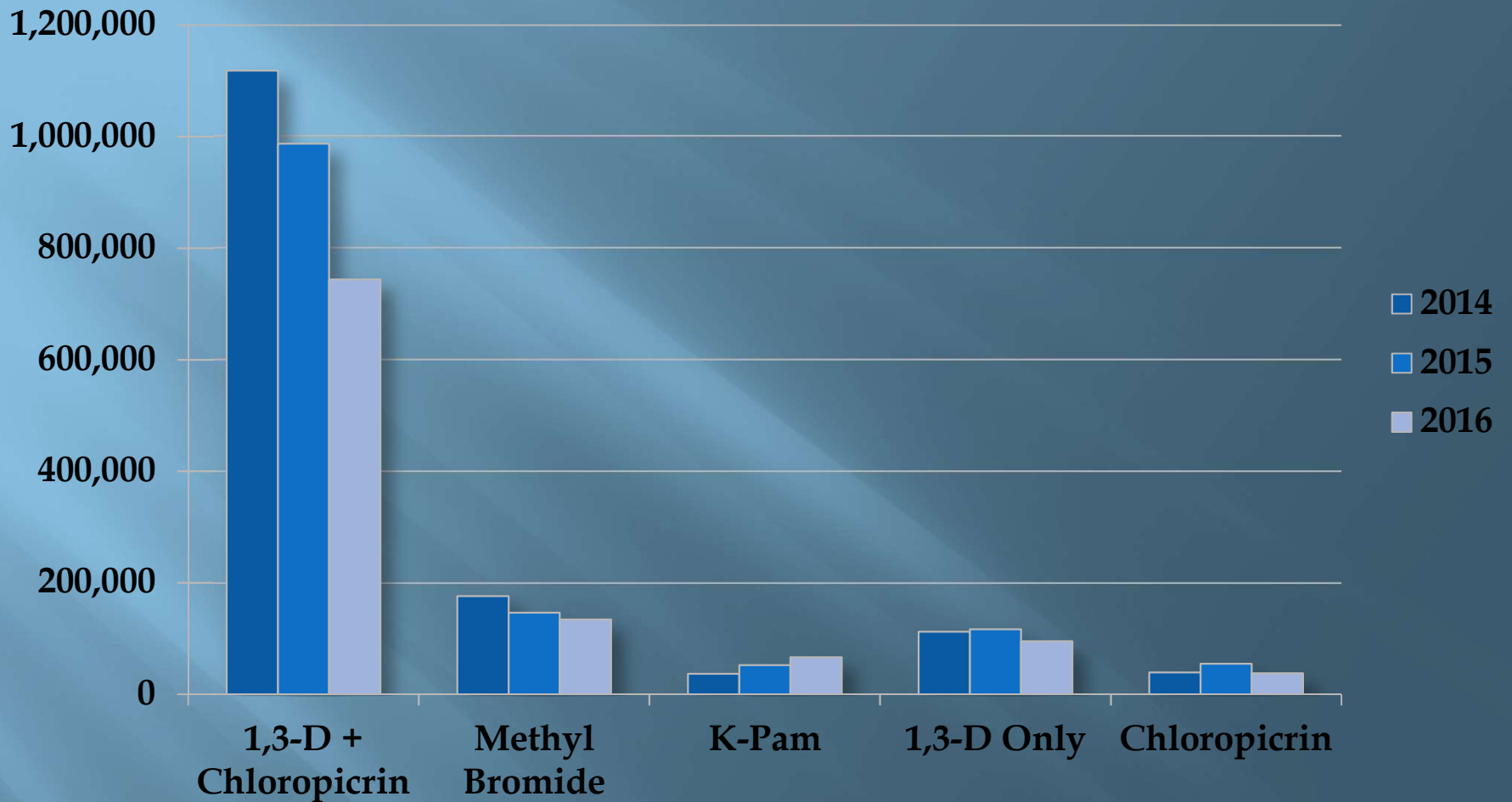


# 2016 Field Soil Fumigants

|                             |                      |
|-----------------------------|----------------------|
| <b>1,3-D + Chloropicrin</b> | <b>744,117 lbs</b>   |
| <b>Methyl bromide</b>       | <b>134,184 lbs</b>   |
| <b>1,3-D Only</b>           | <b>95,295 lbs</b>    |
| <b>100% Chloropicrin</b>    | <b>37,759 lbs</b>    |
| <b>K-Pam</b>                | <b>66,358 lbs</b>    |
| <b>Total</b>                | <b>1,079,729 lbs</b> |



# 3 Year Use Comparison (pounds)



# Areas in need of improvement: Communication – Buffer Zones

Ensure adjacent operators receive notification at least 48 hours ahead that a buffer will be posted on their property

Ensure employees and other persons stay outside posted buffer areas

Remember that employees or other persons are not allowed to walk thru buffer zones

Buffer zones cannot be used as parking areas



# Areas in need of improvement: Be Proactive

Anticipate potential  
problems and plan  
accordingly

Consider alternative  
solutions to challenges



# Areas in need of improvement: Be Proactive

Anticipate problems in the field before they occur.

What steps can be taken to mitigate potential problems?

If you believe there is a risk of exposure to fieldworkers or other people nearby ask them to leave the area.

Ensure the safety of people nearby

Monitor your fumigated fields for signs of problems



# Take Time to: Understand Fumigation Requirements

Review fumigant label requirements and specific county conditions

When unsure about a requirement or condition contact your PCA or local Agricultural Commissioner

**RESTRICTED USE PESTICIDE**  
DUE TO ACUTE TOXICITY AND CARCINOGENICITY  
For retail sale to and use by certified applicators or persons under their direct supervision and only for those uses covered by the certified applicator's certification.

## Tri-Form 80

*A multi-purpose liquid fumigant for preplant treatment of soil to control plant parasitic nematodes and to help manage certain soil-borne diseases and symphylians in cropland. Not for use in greenhouses or other enclosed areas and not for use in drip or other chemigation applications.*

**ACTIVE INGREDIENTS:**

|                                 |             |
|---------------------------------|-------------|
| Chloropicrin .....              | 79.8%       |
| 1,3-Dichloropropene .....       | 19.5%       |
| <b>OTHER INGREDIENTS:</b> ..... | <u>0.7%</u> |
| <b>TOTAL:</b> .....             | 100.0%      |

*One gallon of Tri-Form 80 weighs 12.96 pounds at 68° F (20° C).  
Contains 2.5 pounds of 1,3-Dichloropropene and 10.3 pounds of Chloropicrin per gallon.*

**KEEP OUT OF REACH OF CHILDREN**



**DANGER      PELIGRO**

**POISON** [Note : « Poison » will be printed in red.]

*Si Usted no entiende la etiqueta, busque a alguien para que se la explique a Usted en detalle.  
(If you do not understand the label, find someone to explain it to you in detail.)*

IN ALL CASES OF OVEREXPOSURE, GET MEDICAL ATTENTION IMMEDIATELY.  
TAKE PERSON TO A DOCTOR OR TO AN EMERGENCY TREATMENT FACILITY.

| FIRST AID                      |  |
|--------------------------------|--|
| <b>If swallowed:</b>           | <ul style="list-style-type: none"> <li>• Call a poison control center or doctor immediately for treatment advice.</li> <li>• Have person sip a glass of water if able to swallow.</li> <li>• Do not induce vomiting unless told to do so by a poison control center or doctor.</li> <li>• Do not give anything by mouth to an unconscious person.</li> </ul> |
| <b>If on skin or clothing:</b> | <ul style="list-style-type: none"> <li>• Take off contaminated clothing.</li> <li>• Rinse skin immediately with plenty of water for 15-20 minutes.</li> <li>• Call a poison control center or doctor for treatment advice.</li> </ul>  |
| <b>If inhaled:</b>             | <ul style="list-style-type: none"> <li>• Move person to fresh air.</li> <li>• If person is not breathing, call 911 or an ambulance, and then give artificial respiration, preferably by mouth-to-mouth, if possible.</li> <li>• Call a poison control center or doctor for further treatment advice.</li> </ul>  |
| <b>If in eyes:</b>             | <ul style="list-style-type: none"> <li>• Hold eyes open and rinse slowly and gently with water for 15-20 minutes.</li> <li>• Remove contact lenses, if present, after 5 minutes, and then continue rinsing eyes.</li> <li>• Call a poison control center or doctor for treatment advice.</li> </ul>  |

# Take Time to: Prepare

Proper field preparation:

Prevents delay in the fumigation schedule

Reduces potential exposure to fieldworkers and others

Reduces additional work to make repairs

Ensures that a fumigation can be done safely and approved by the Agricultural Commissioner's office



# The Biggest Change...

- ▣ Methyl Bromide phase-out period is over
  - No more MB use is permitted.
- ▣ There are no critical use exemptions.
- ▣ Quarantine pre-shipment use still permitted (24c SLN registration)

# DPR Regulatory Changes: 1,3-Dichloropropene

- ▣ 1, 3-D annual use limit for each township is 136,000 pounds per calendar year.
- ▣ Dow AgroSciences or their contractor (Agrian) is responsible for tracking, reporting and ensuring the township limits are observed.
- ▣ The annual township use limit is fixed and cannot be exceeded (i.e., cannot “bank” and roll-over for use in the next year.)
- ▣ All 1,3-D applications are prohibited during December.



# DPR Regulatory Changes: Proposal for Notification Requirements

- ▣ DPR currently completing proposed regulatory changes to field fumigation notification requirements.
- ▣ Updates and changes to notification requirements expected within the next year.

# DPR Regulatory Changes: Label Changes - Chloropicrin

- ▣ DPR is finalizing its recommended permit conditions for chloropicrin.
- ▣ The conditions will also be reflected on chloropicrin product labels by end of 2017.
- ▣ Santa Cruz County chloropicrin use conditions already cover essentially all aspects of the updates, so do not expect any major changes.

# 2017 Santa Cruz County Fumigation Conditions

- ▣ It is anticipated that fumigant conditions for 2017 will remain mostly unchanged
- ▣ There may be some minor language revisions to provide better clarification in some areas

# 2017 Santa Cruz County Fumigation Conditions

## The Department of Pesticide Regulation (DPR) Approved Buffer Zone Reduction Tarp list (updated)

### DPR's Chloropicrin tarpaulin list

December 30, 2015  
Revised (Jul. 12, 2016)

### Tarpaulins to receive 60% buffer zone reduction credit

Tarpaulin to receive a 60% buffer zone reduction credit for chloropicrin field fumigations are listed below: *all colors for each tarp are included*

AEP Sunfilm UltraShield, EVOH barrier, 1.0 mil  
AgroSIF 015 Super Impermeable Film, EVOH barrier, 1.0 mil  
Berry Plastics TOTAL BLOCKADE TIF, 1.25 mil  
Filmtech Grozone MAX TIF, 1.25 mil  
Ginegar Ozgard T Plus, 1.5 mil, TIF  
Guardian TIF,  $\geq 1.1$  mil  
Imaflex USA Can-Block Clear EVOH TIF, 1.0 mil  
Imaflex USA Can-Block Clear v-TIF XSB, 0.9 mil  
Next Generation TIF DN MULCH, 1.25 mil  
PLAINNOVA UBF ULTRA100,  $\geq 1.0$  mil \*  
Raven TIF VaporSafe™,  $\geq 1$  mil  
TRM Manufacturing Weather-all Power Film HB 125,  $\geq 1.25$  mil

# 2017 Santa Cruz County Fumigation Conditions

General Conditions include the following:

- A site specific fumigation plan must be submitted for evaluation
  - ▣ Use of DPR approved buffer zone reduction tarps for products containing chloropicrin
  - ▣ Tarps cannot be perforated until 216 hours (9 days) have elapsed from the time of fumigation completion
  - ▣ Applications must be done by a registered Pest Control Business

# 2017 Santa Cruz County Fumigation Conditions

- ▣ Notice of Intent to fumigate – must be submitted at least 48 hours prior to the start of the fumigation
- Proposed fumigations within a  $\frac{1}{4}$  mile of a public school must be submitted at least 5 days prior to the start of the fumigation

Questions ?

[www.agdept.com](http://www.agdept.com)