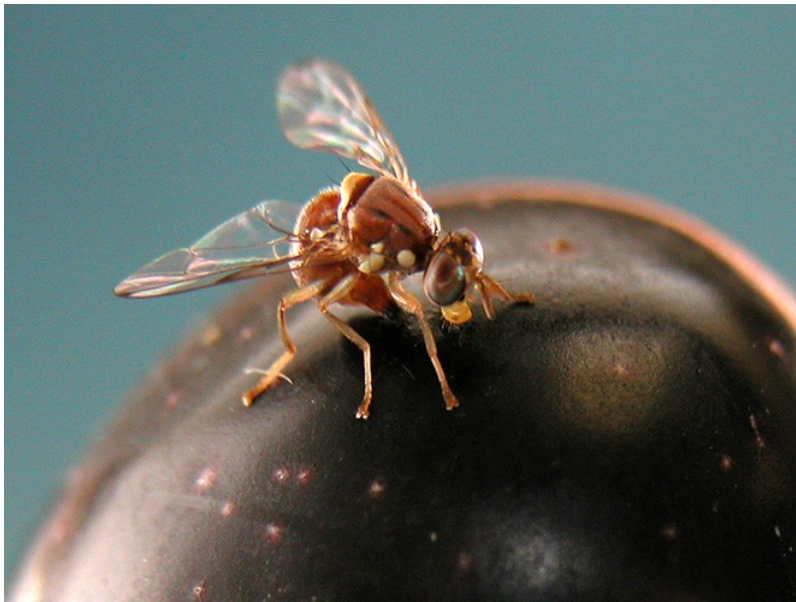


Insect Updates: Olive Fly & Brown Marmorated Stink Bug

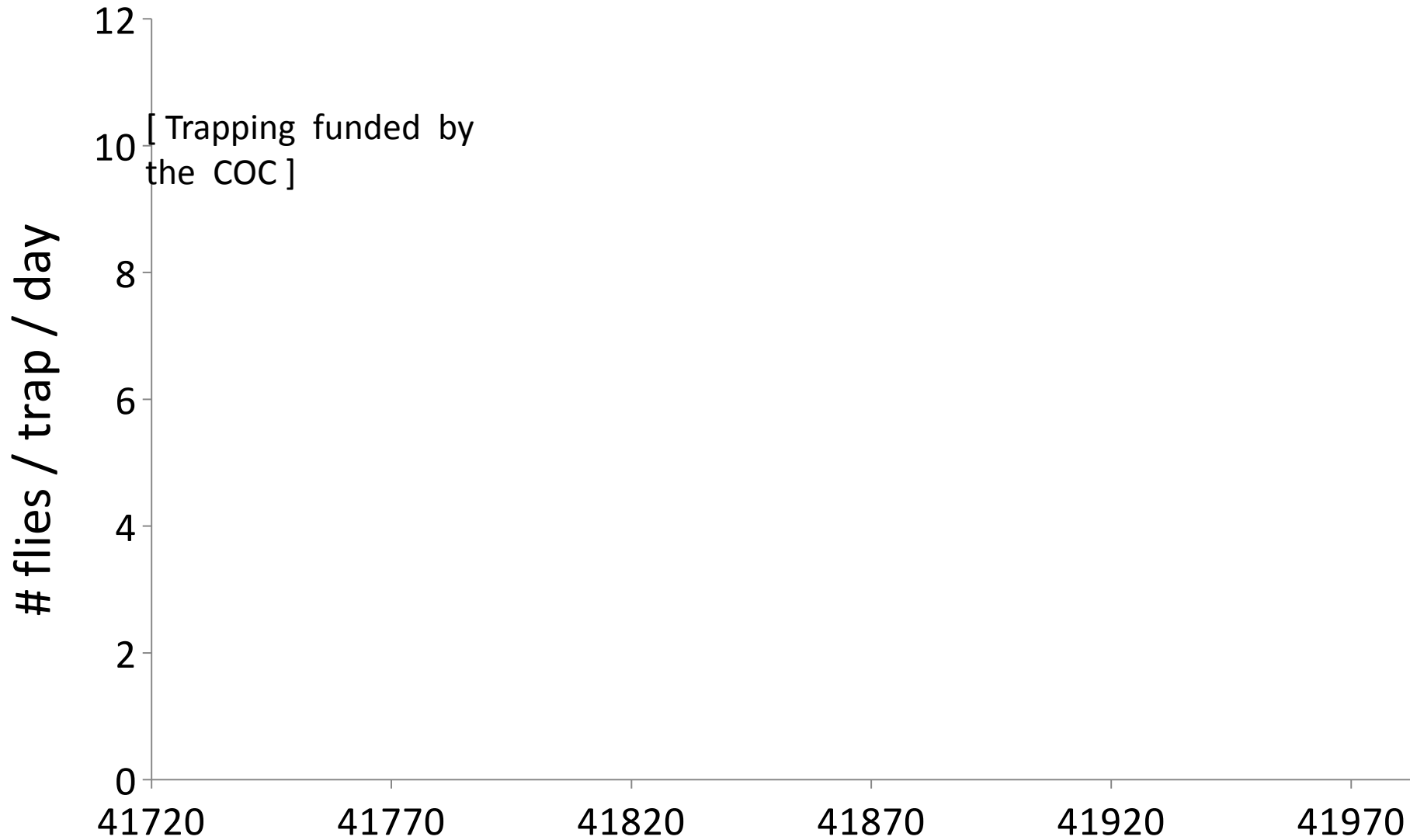


Dani Lightle
UCCE Farm Advisor
Glenn, Butte, & Tehama Cos.
April 29, 2014

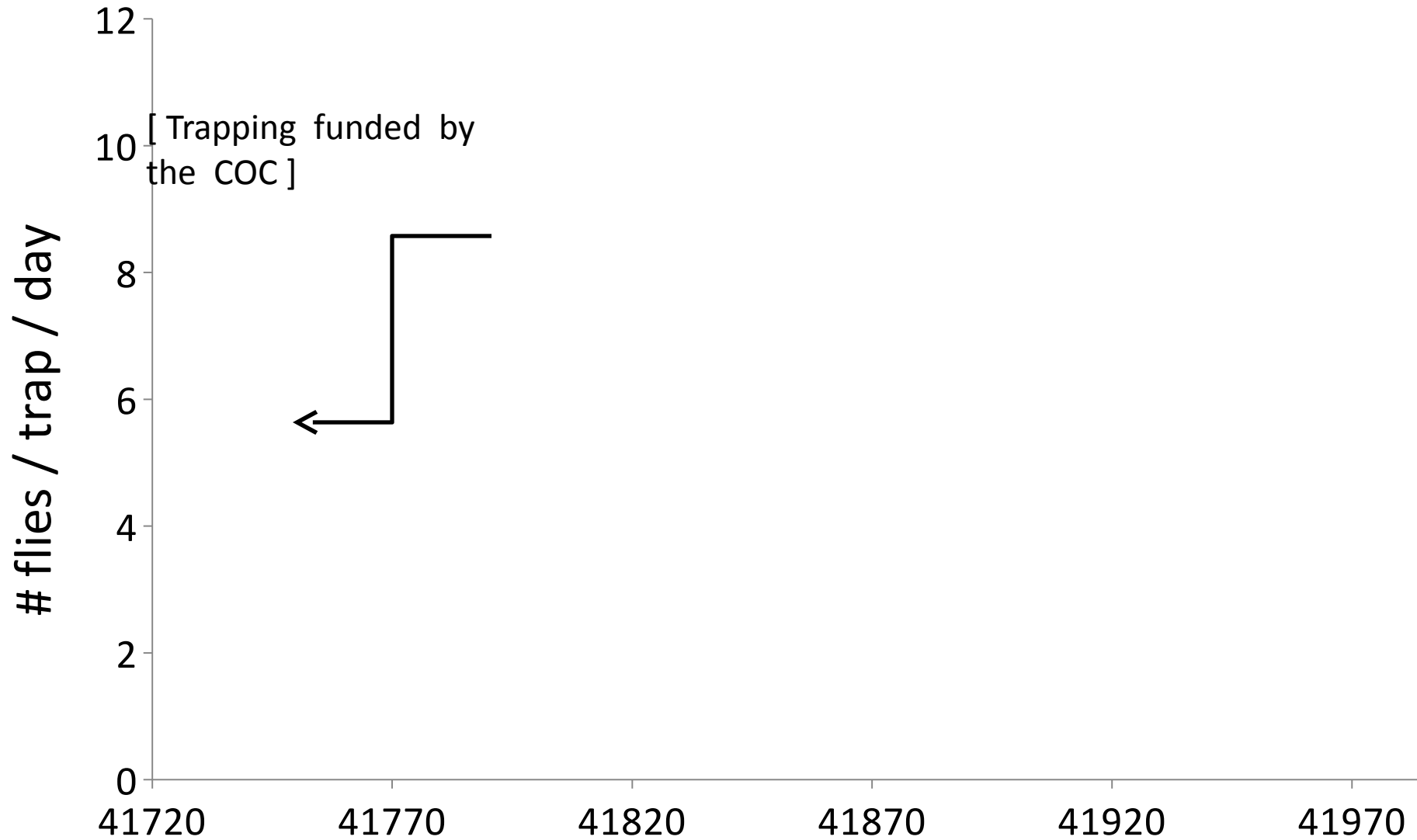
Olive fly damage



Historical trap counts in Glenn & Tehama counties



Historical trap counts in Glenn & Tehama counties



Individual trap counts - 2014

Orland & Corning

flies / trap / day

12
10
8
6
4
2
0

Monitoring



McPhail trap – bait with yeast pellets

Check trap counts weekly

Traps should already be out!

Olive fly identification



Male



Female

Olive fly management

GF-120 Bait Sprays

- Spray alternate rows
- North or east side of trees, upper half
- Large droplet size (4-5mm)
- 10-20 oz./acre
- Apply once every 7 days; lasts 14 days



Oct. 13,
2013:

Print Email

Big new pest is stinky problem

By HEATHER HACKING-Staff Writer

POSTED: 10/08/2013 12:59:13 AM PDT

A large, foreign and invasive version of the common stink bug has been making its way through California, including confirmation of its presence in Butte County.

The brown marmorated stink bug, *Halyomorpha halys*, has created severe economic damage in crops in other states, including fruit and vegetables such as cucumbers, pumpkins and melons.

For homeowners, the quarter-inch bug with long antennae, will seek warmth during the cold months, including homes and garages.

Just as its name implies, the bug stinks when disturbed or smashed — like sulfur or stinky eggs — and the smell lingers unless the area is disinfected.

Click photo to enlarge



The brown marmorated stink bug, *Halyomorpha halys*, is seen in this undated photo submitted by the...

Known Host Plants for Brown Marmorated Stink Bug, *Halyomorpha halys*

<u>Common name</u>	<u>Scientific name</u>	<u>Common name</u>	<u>Scientific name</u>
Abelia, Glossy	<i>Abelia x grandiflora</i>	Honeysuckle	<i>Lonicera</i>
Apple	<i>Malus domestica</i>	Honeysuckle, Tartarian	<i>Lonicera tatarica</i>
Apple	<i>Malus pumila</i>	Jerusalem Artichoke	<i>Helianthus tuberosus</i>
Apricot	<i>Prunus</i>	Jetbead	<i>Rhodotypos scandens</i>
Apricot, Japanese	<i>Prunus mume</i>	Jujube	<i>Ziziphus sativa</i>
Ash, Green	<i>Fraxinus pennsylvanica</i>	Kiwi	<i>Actinidia deliciosa</i>
Ash, Oregon	<i>Fraxinus oregona</i>	Laurustinus	<i>Viburnum tinus</i>
Ash, White	<i>Fraxinus americana</i>	Lilac	<i>Syringia</i>
Asparagus	<i>Asparagus officinalis</i>	Magnolia, Star	<i>Magnolia stellata</i>
Basswood	<i>Tilia americana</i>	Malabar spinach	<i>Basella rubra</i>
Bean, Bush & Kidney	<i>Phaseolus vulgaris</i>	Maple, Bigleaf	<i>Acer macrophyllum</i>
Bean, Lima	<i>Phaseolus lunatus</i>	Maple, Hedge	<i>Acer campestre</i>
Bean, Long	<i>Vigna unguiculata sesquipedalis</i>	Maple, Japanese	<i>Acer palmatum</i>
Bean, Pole	<i>Phaseolus vulgaris</i>	Maple, Norway	<i>Acer platanoides</i>
Beet, Sugar	<i>Beta vulgaris</i>	Maple, Red	<i>Acer rubrum</i>
Birch	<i>Betula</i>	Maple, Sugar	<i>Acer saccharum</i>
Bittersweet	<i>Celastrus</i>	Mountain Ash	<i>Sorbus</i>
Blackberry	<i>Rubus</i>	Mulberry	<i>Morus</i>
Blueberry	<i>Vaccinium</i>	Mullein, Woolly	<i>Verbascum thapsus</i>
Buckthorn	<i>Rhamnus</i>	Nightshade	<i>Solanum</i>
Burcucumber	<i>Sicyos angulatus</i>	Nightshade, Black	<i>Solanum nigrum</i>
Burdock	<i>Arcium minus</i>	Oregon Grape	<i>Mahonia aquifolium</i>
Butterfly Bush	<i>Buddleia davidii</i>	Paulownia	<i>Paulownia catalpifolia</i>
Cantaloupe	<i>Cucumis melo</i>	Paulownia	<i>Paulownia elongata</i>
Catalpa	<i>Catalpa speciosa</i>	Paulownia	<i>Paulownia fortunei</i>
Cedar	<i>Cedrus</i>	Paulownia	<i>Paulownia kawakamii</i>
Celosia	<i>Celosia argentea</i>	Pea	<i>Pisum sativum</i>
Cherry, Black	<i>Prunus</i>	Peach	<i>Prunus persica</i>
Cherry, Sour	<i>Prunus</i>	Pear, Asian	<i>Pyrus pyrifolia</i>
Cherry, Sweet	<i>Prunus avium</i>	Pear, European	<i>Pyrus communis</i>
Chokecherry	<i>Prunus virginiana</i>	Pecan	<i>Carya illinoensis</i>
Chrysanthemum	<i>Chrysanthemum</i>	Pepper	<i>Capiscum annuum</i>
Citrus	<i>Citrus</i>	Periwinkle	<i>Catharanthus roseus</i>
Coleus	<i>Coleus blumei</i>	Persimmon	<i>Diospyros</i>
Comfrey	<i>Symphytum officinale</i>	Persimmon, Japanese	<i>Diospyros kaki</i>
Corn, Sweet	<i>Zea mays</i>	Plum	<i>Prunus</i>
Crabapple	<i>Malus</i>	Plum, Ornamental	<i>Prunus</i>
Cranberrybush, American	<i>Viburnum opulus v. americanum</i>	Princess Tree	<i>Paulownia tomentosa</i>
Cucumber	<i>Cucumis sativus</i>	Privet	<i>Ligustrum</i>
Dahlia	<i>Dahlia</i>	Raspberry	<i>Rubus</i>
Dogwood, Gray	<i>Cornus racemosa</i>	Rape	<i>Brassic napus</i>
Dogwood, Red Osier	<i>Cornus sericea</i>	Redbud	<i>Cercis canadensis</i>
Eggplant	<i>Solanum melongena</i>	Rose, Rugosa	<i>Rosa rugosa</i>
Elderberry	<i>Sambucus</i>	Rose of Sharon	<i>Hibiscus syriacus</i>
Euonymus	<i>Euonymus</i>	Russian Olive	<i>Eleagnus angustifolia</i>
Euonymus, Winged	<i>Euonymus alatus</i>	Serviceberry	<i>Amelanchier canadensis</i>
Filbert, Turkish	<i>Corylus colurna</i>	Siberian Pea Shrub	<i>Caragana arborecens</i>
Fig	<i>Ficus</i>	Soybean	<i>Glycine max</i>
Firethorn	<i>Pyracantha</i>	Spider Flower	<i>Cleome hasslerana</i>
Golden Chain Tree	<i>Laburnum anagyroides</i>	Spiraea	<i>Spiraea</i>
Golden Rain Tree	<i>Koeleruteria paniculata</i>	Strawberry Tree	<i>Arbutus unedo</i>
Grape (Cultivated, Table)	<i>Vitis</i>	Sumac	<i>Rhus</i>
Grape (Cultivated, Wine)	<i>Vitis</i>	Sunflower	<i>Helianthus</i>
Grape (Wild)	<i>Vitis</i>	Sweetgum	<i>Liquidambar</i>
Hackberry	<i>Celtis occidentalis</i>	Sycamore	<i>Platanus occidentalis</i>
Harlequin Glorybower	<i>Clerodendron trichotomum</i>	Tomato	<i>Solanum lycopersicum</i>
Hawthorn	<i>Crataegus</i>	Viburnum, Blackhaw	<i>Viburnum prunifolium</i>
Hibiscus	<i>Hibiscus rosa-sinensis</i>	Viburnum, Tea	<i>Viburnum setigerum</i>
Hinoki	<i>Chamaecyparis</i>	Walnut, Black	<i>Juglans nigra</i>
Holly	<i>Ilex</i>	Watermelon	<i>Citrullus lanatus</i>
Holly, American	<i>Ilex opaca</i>	Willow, Pussy	<i>Salix</i>
Holly, Winterberry	<i>Ilex verticillata</i>	Zelkova	<i>Zelkova</i>
Honeyberry Bush	<i>Lonicera kamchatika</i>	Zinnia	<i>Zinnia</i>

Approximately 170 known host plants

Olives are not currently listed as a host

Urban and agricultural pest



Stinkbug identification



Box-elder bug

Leaf-footed bug

Not stinkbugs:



Photo: C.
Hedstrom

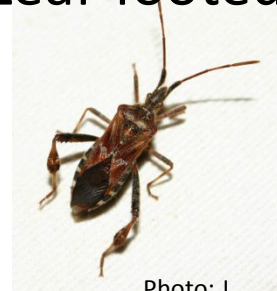


Photo: J.
Schmidling

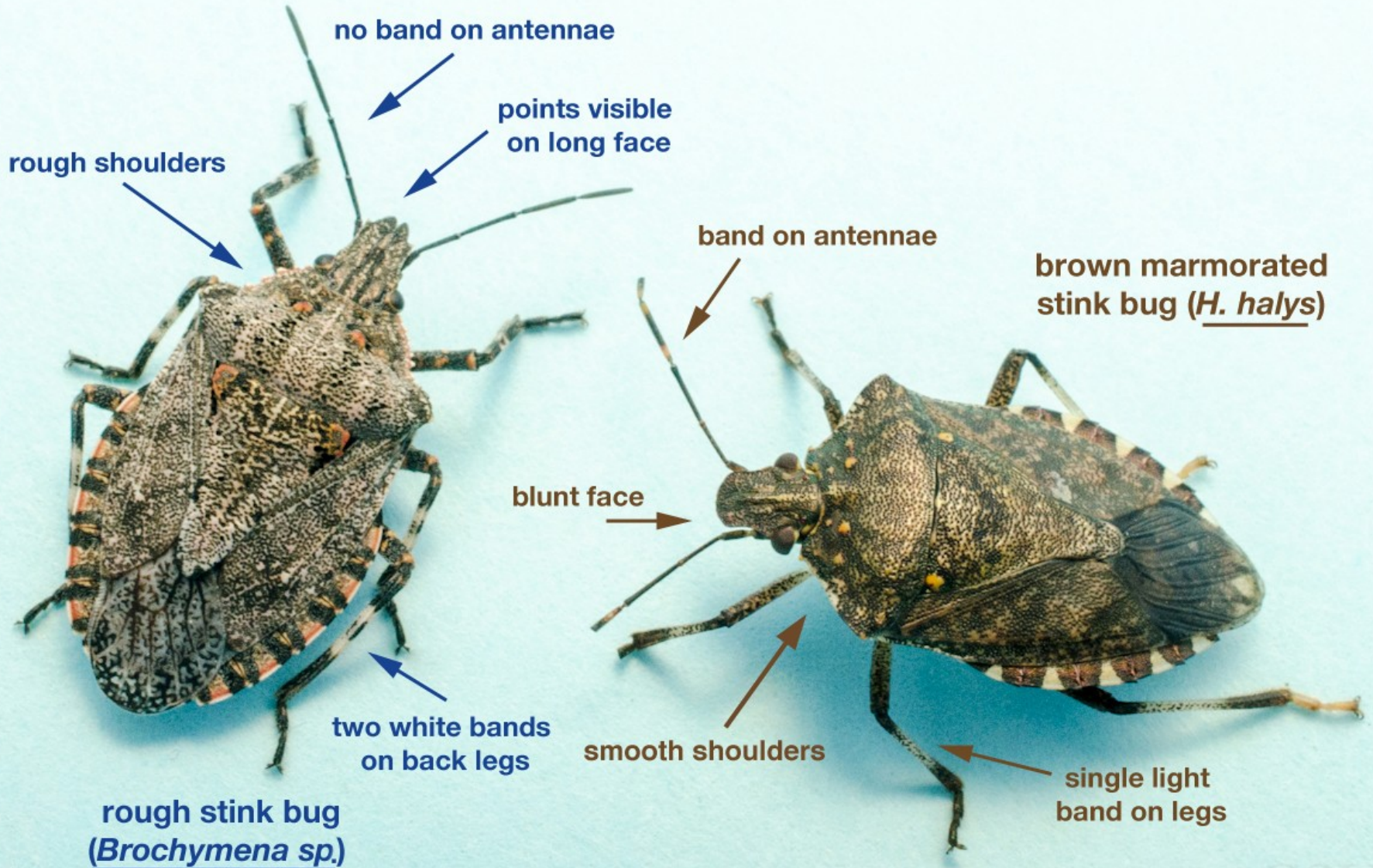
Common look-a-like stinkbugs in CA



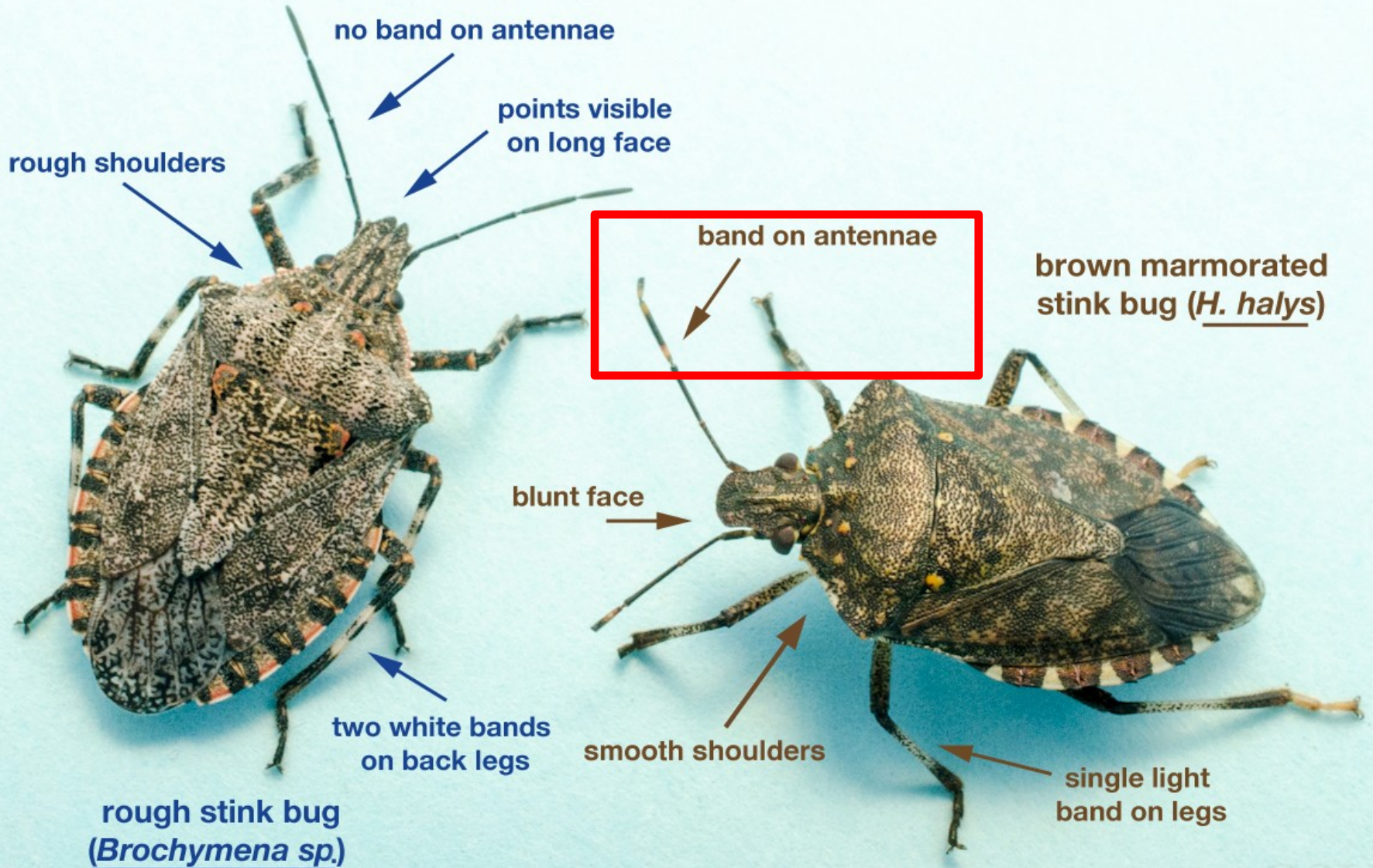
BMSB



BMSB or rough stink bug?



BMSB or rough stink bug?



BMSB eggs and nymphs



If you find BMSB

Collect the bug and label with date, host plant, & location

Submit to local farm advisor or agricultural commissioner's office

