

A photograph of an olive grove with rows of trees stretching into the distance under a clear blue sky. The trees are mature with dark trunks and dense green foliage. The ground is a mix of dirt and sparse grass.

**UPDATE
2014**

**GLENN COUNTY OLIVE PEST
MANAGEMENT DISTRICT**

Glenn County Olive Pest Management District

- Survey and Assessment
- Trapping
- Outreach/Education
- Abatement
- Roadside Spraying
- Tree Removal

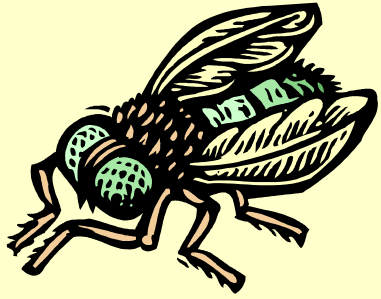
Glenn County Olive Pest Management District

- **Survey and Assessment**
 - First one completed in 2005
 - Updated as olive trees are added or removed
 - Let us know if you remove your trees or move
 - 8 cents per tree, 10 trees minimum, 100 trees per acre maximum
 - Comprehensive assessment done every other year

Glenn County Olive Pest Management District

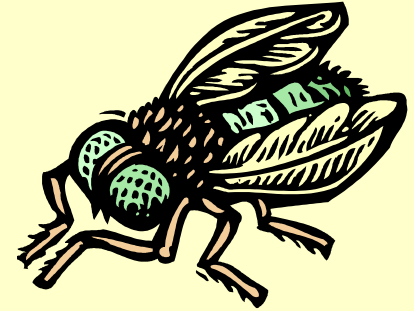
- **Trapping**

- 2003: Mass trapping with sticky traps and Attract and Kill traps (Orland, Hamilton City, Willows and Artois)
- 2004, 2005, 2006, 2007, 2008, 2009, 2010, 2011, 2012 and 2013:
 - Placed Magnet OL traps (aka Attract and Kill traps) in Orland area (& sometimes Hamilton City)
 - Placed sticky traps in Hot Spot areas
- 2014: will again place Magnet OL traps in Orland and Hot Spot areas



Trap Results

(Beware!)



- Normally- find flies in spring, less in summer then increase in fall and none November to March
- Last few years- normal amounts in spring, way too many in summer, way more in fall, still found flies in November thru March!

Conclusion: TRAP (and spray early if needed)



Glenn County Olive Pest Management District

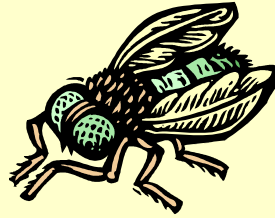
• Outreach Program

- Informational letters sent to growers and homeowners:
 - Information on control techniques
 - Information on tree removal program
- Provided sticky traps to growers in past
- Workshops held in 2006, 2007, 2009, 2010 and 2011 at a local orchard for smaller growers; well attended
- Newspaper articles on public meetings



Demonstration using Kaolin clay (Surround) as a full coverage spray

Glenn County Olive Pest Management District



Abatement

- What do you do if you are spraying but your neighbor is not?
 - Call the District at 865-1133 or 934-6501 to obtain an abatement request form (or pick up the form at the Glenn Co. Ag Office)
 - Fill it out and return to the Ag Office
 - Property is trapped by District
 - If OLFF is found, trees must be sprayed
 - By owner or district (who will charge)



Glenn County Olive Pest Management District



Roadside Spray Program

- 2003, 2004, 2005, 2006, 2007, 2008, 2009, 2010, 2011, 2012, 2013 and 2014
- Every 4 to 6 weeks, depending on fly counts
- May, June, (maybe July,) August, September, October
- All roadside olive trees in Orland and Hamilton City area
- Use GF-120 (Spinosad), registered Organic use

- **Tree Removal Program**
 - **District removal of olive trees**
 - **Over 2,000 olive trees mostly on non-commercial properties**
 - **District sprays cut stumps with Garlon**
 - **County Public Works can remove roadside olive trees also**
 - **Uncared-for trees on county right-of-way**
 - **Started in Capay and Lake areas**
 - **Over 200 trees removed so far**



We can remove trees



We spray cut stumps
unless...

Stumps are
removed by owner

Chipping whole orchards



A large, mature tree with a thick, gnarled trunk and spreading branches dominates the center of the image. A blue step ladder is leaning against the tree's trunk. The ground is covered in dry, brown leaves and grass. In the background, there is a wooden fence and a white building with a wooden deck. The scene is brightly lit, suggesting a sunny day.

Some trees
are bigger
than others

Glenn County Olive Pest Management District

New Housing Developments

- **Requested the planning departments to notify the OPMD when receive plans for new developments**
 - **City of Orland**
 - **County of Glenn**

Next Meeting

- Late May (date to be announced) at 9 am
 - Meet at Glenn County Ag Department (Willows)
 - Includes Public Hearing (9:30 am) for comments on proposed budget and assessment

Board of Directors

- Dan Kennedy- Chairman
- Vacant- Vice chairman
- Ed Romano- Secretary
- John Erickson- Assist. Secretary
- Scott Studybaker- Director
- James Aguiar- Alternate
- Chuck Schonauer- Alternate

A photograph of a dirt path winding through a grove of trees. The path is flanked by rows of trees, and a strip of green grass runs down the center. The scene is brightly lit, suggesting a sunny day. The text "Any Questions?" is overlaid in the upper right corner, and "Thank You" is overlaid in the middle right.

**Any
Questions?**

Thank You