

A photograph of an olive grove. The trees are covered in green netting, likely for pest control. The ground is covered in dry leaves and grass. The sky is blue with some clouds.

UPDATE

2012

**GLENN COUNTY OLIVE PEST
MANAGEMENT DISTRICT**

Glenn County Olive Pest Management District

- Trapping
- Survey and Assessment
- Outreach/Education
- Abatement
- Roadside Spraying
- Tree Removal
- Hot Spots

Glenn County Olive Pest Management District

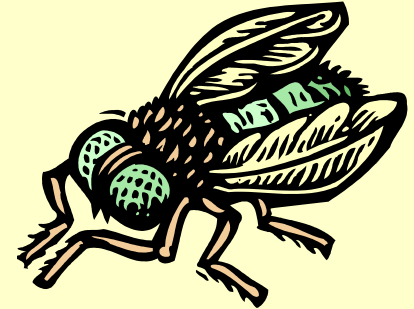
- **Trapping**

- 2003: Mass trapping with sticky traps and Attract and Kill traps (Orland, Hamilton City, Willows and Artois)
- 2004, 2005, 2006, 2007, 2008, 2009, 2010 and 2011:
 - Placed Attract and Kill traps (aka Magnet OL traps) in Orland area (& sometimes Hamilton City)
 - Placed sticky traps in Hot Spot areas
- 2012: will again place Magnet OL traps in Orland and Hot Spot areas



Trap Results

(Beware!)



- Normally- find flies in spring, less in summer then increase in fall and none November to March
- 2011- normal amounts in spring, way too many in summer, way more in fall, still found flies in November thru March!

Conclusion: TRAP and spray early



Glenn County Olive Pest Management District

- **Survey and Assessment**

- First one completed in mid 2005
- Updated as olive trees are added or removed
- 8 cents per tree, 10 trees minimum, 100 trees per acre maximum
- Comprehensive assessment done every other year

Glenn County Olive Pest Management District

- **Outreach Program**

- Informational letters sent to growers and homeowners:
 - Information on control techniques
 - Information on tree removal program
- Provided sticky traps to growers in past
- Workshops held in 2006, 2007, 2009, 2010 and 2012 at a local orchard for smaller growers; well attended
- Newspaper articles on public meetings



Demonstration using Kaolin clay (Surround) as a full coverage spray

Glenn County Olive Pest Management District



Abatement

- What do you do if you are spraying but your neighbor is not?
 - Call the District at 865-1133 or 934-6501 to obtain an abatement request form (or pick up the form at the Glenn Co. Ag Office)
 - Fill it out and return to the Ag Office
 - Property is trapped by District
 - If OLFF is found, trees must be sprayed
 - By owner or district (who will charge)





Glenn County Olive Pest Management District

- **Roadside Spray Program**

- 2003, 2004, 2005, 2006, 2007, 2008, 2009, 2010, 2011 and 2012
- Every 4 to 6 weeks, depending on fly counts
- May, June, (maybe July,) August, September, October
- All roadside olive trees in Orland and Hamilton City area

Glenn County Olive Pest Management District

- **Tree Removal Program**
 - **District removal of olive trees**
 - **Over 1,880 olive trees mostly on non-commercial properties**
 - **District sprayed cut stumps with Garlon**
 - **County Public Works removes roadside olive trees**
 - **Uncared-for trees on county right-of-way**
 - **Started in Capay and Lake areas**
 - **Over 200 trees removed so far**

Glenn County Olive Pest Management District



**THE
MONSTER
TREE**

Glenn County Olive Pest Management District

- 
- **New Housing Developments**
 - Requested the planning departments to notify the **OPMD** when receive plans for new developments
 - City of Orland
 - County of Glenn

Glenn County Olive Pest Management District

- Hot spots
 - ✓ There are certain areas where fly population is very high
 - ✓ 2009, 2010 and 2011- Area south of Orland
 - From I-5 to Rd M and South St. to Rd 20
 - Some traps 70+ flies within 2 week period
 - Education of homeowners, Magnet OL traps
 - ✓ 2012- Will be monitoring random areas around Orland

Board of Directors

- Scott Studybaker- Chairman
- Dan Kennedy- Vice chairman
- Ed Romano- Secretary
- John Erickson- Assist. Secretary
- Adam Englehardt- Director
- James Aguiar- Alternate
- Chuck Schonauer- Alternate

A photograph of a dirt path leading through a field of green bushes. The path is flanked by rows of bushes, and the ground is a mix of dirt and grass. The text "Any Questions?" is overlaid in the upper right, and "Thank You" is overlaid in the lower right.

**Any
Questions?**

Thank You