



# SACRAMENTO VALLEY OLIVE DAY

Doug Compton  
Tehama County Ag Dept  
530 527-4504

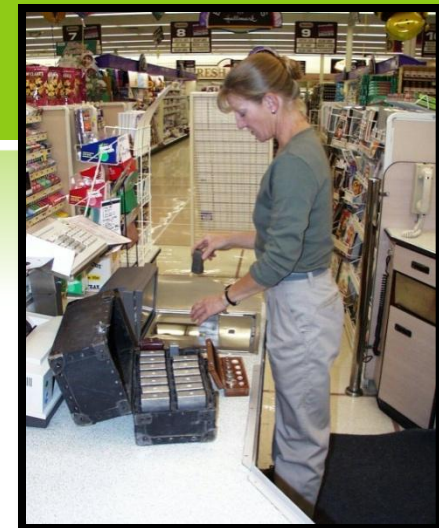


# TEHAMA COUNTY DEPARTMENT OF AGRICULTURE

Contact Us:

1760 Walnut St

530-527-4504

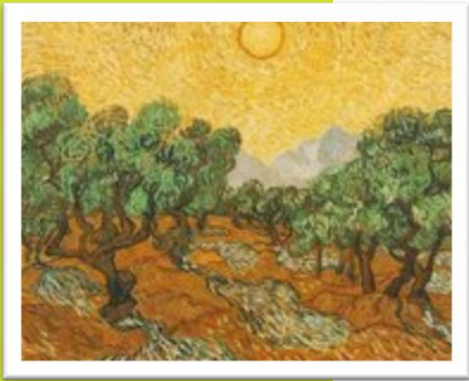


# 2 HOURS CE CREDIT

- ③ Register before leaving
- ③ Will send attendance list to other counties
- ③ State Licenses (QAL, QAC, PCA)
- ③ County Private Applicator Certificates

# CERTIFIED APPLICATORS

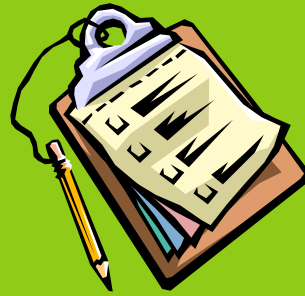
- ◎ Allows use and supervision of restricted materials (Federal, California, Groundwater)
- ◎ Allows training of handlers and fieldworkers
- ◎ 6 hours in three years to renew Private App
- ◎ 20 hours in two years for QAL, QAC



# PERMITS, ID NUMBERS



- ⊙ Please call for appointment
- ⊙ Must be signed by owner/operator or authorized agent.



# AGENDA

- ③ 2009 Review
- ③ 2008 Respirator Regs
- ③ New Notification Requirements
- ③ New Pests on the Horizon



# 2009 REVIEW

- ◎ Pesticide Use Inspections: 122 insp/8 NC's
- ◎ Records Inspections: 21/8 NC's
- ◎ Complaint/Illness/Investigations: 19/10 NC's



# 2009 REVIEW

- ⊙ Label violation-protective equipment, not registered, etc.
- ⊙ Drift, suitable climatic conditions
- ⊙ Late PURs, Operator ID #
- ⊙ Storage locked, posted, Emer. Med. Info
- ⊙ Labeling not available
- ⊙ Non pesticide related complaints



# RESPIRATOR REGULATION



- ⊙ Went into effect 1/1/08
- ⊙ Applies to Employees using approved respirators
- ⊙ Voluntary use
- ⊙ Required use





# VOLUNTARY RESPIRATOR USE



- ⊙ If use is NOT required by label, permit or employer
- ⊙ Filtering facepiece ('Paper' Dust Mask) – Voluntary Respirator Use Posting



- ⊙ Tight-fitting Mask (Rubber Cartridge Respirator, etc.)-Full respirator program

# REQUIRED RESPIRATOR USE



- ③ Written Program
- ③ Medical evaluation
- ③ Fit testing
- ③ Program review

[www.cdpr.ga.gov/docs/whs/ind\\_hygiene\\_resp\\_prot.htm](http://www.cdpr.ga.gov/docs/whs/ind_hygiene_resp_prot.htm)

# OLIVE PSYLLID



- ◎ First detected in early 2007
- ◎ Survey found widespread in South Coastal California
- ◎ Found in Mediterranean, Middle East to Iran
- ◎ Movement most likely by nursery stock, fresh fruit

# EUROPEAN GRAPEVINE MOTH EGVM

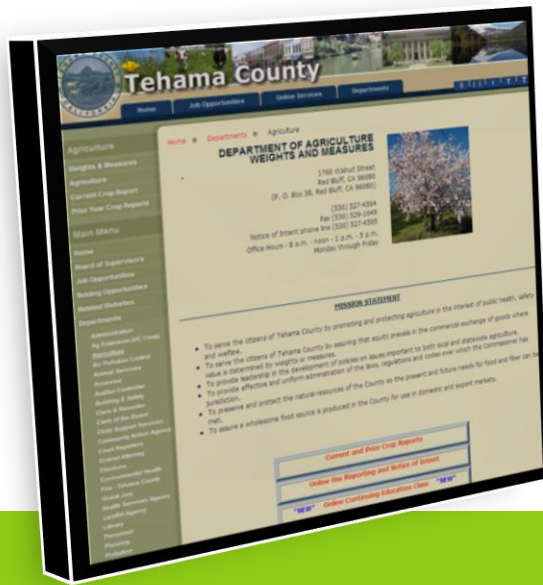
- ① Native to Mediterranean region, Europe
- ① Detected in Chile in 2008, thought to be introduced via equipment
- ① Detected in Napa County in late 2009
- ① Statewide trapping beginning now
- ① Olive can be a secondary host



# EGVM



- ③ Limited trapping will be done in olives in California
- ③ Up to four generations per year
- ③ First generation may cause damage to olive flowers



[www.co.tehama.ca.us](http://www.co.tehama.ca.us)

Tehama County website - online use reporting, crop reports back to 1950

## INFORMATION SOURCES

[www.cdpr.ca.gov](http://www.cdpr.ca.gov)

Department of Pesticide Regulation website - regulations, safety information, handouts, continuing ed classes, pesticides registered for crops, etc





# SACRAMENTO VALLEY OLIVE DAY

Thank you for coming!