

Walnut Anthracnose *Marssonina*
californica in Northern California

Themis Michailides and Richard Buchner

Foliar Lesions on Black Walnut



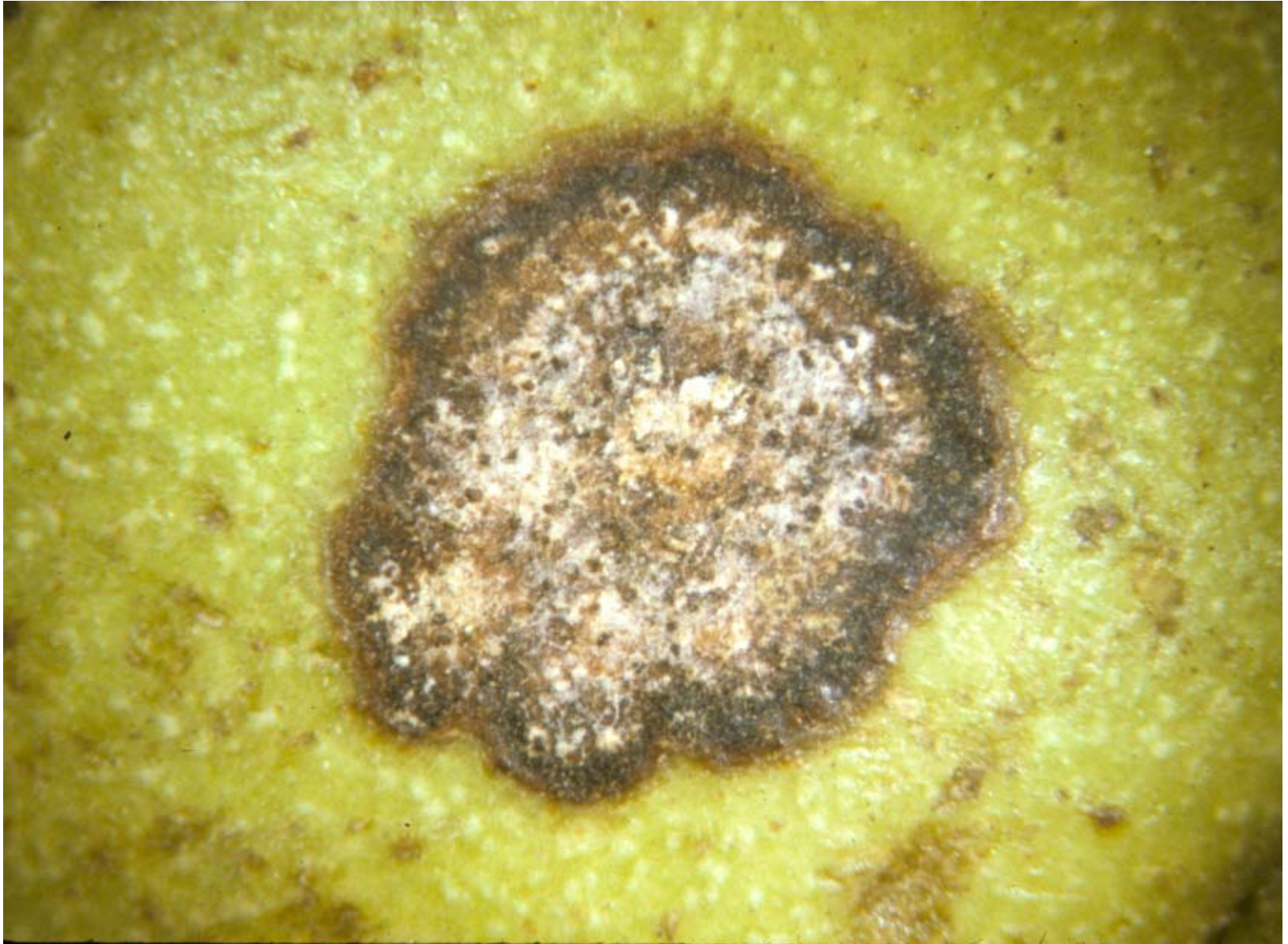


- Observed on Native Black Walnut in riparian areas. No symptoms on Commercial cultivars.
- Native Blacks probably very sensitive. Wet spring provided ideal conditions.

Acervuli on leaf



Acervuli on the nut



Looking at the spores Themis has identified the lesions as walnut anthracnose (*Marssonina californica*)



Distribution

Marssonina californica in California

Marssonina juglandis in other states
in USA and Europe

Blight



Anthracnose

France



Anthracnose Leaf Symptoms

France



Anthracnose

France



Compendium of Nut Crop Diseases suggests aromatic nitriles (chlorothalonil) should be effective

There is an ornamental/non crop label
manufactured for farmsaver.com

QualiPro Chlorothalonil	500 Zn
-------------------------	--------

QualiPro Chlorothalonil	720
-------------------------	-----

QualiPro Chlorothalonil	DF
-------------------------	----